

A
THEATER
WORKS USA
PRODUCTION

CAT KID

COMIC CLUB

The Musical





Welcome to the MAC! Our entire staff is thrilled to have you here and we are grateful that you have chosen to invest your time in live entertainment and world-class culture in our community. We want to offer you a space to unwind and enjoy an evening filled with laughter, music, dance, or theatre. Our aim is to provide you with unique and inspiring opportunities to engage more deeply with the arts. Join us for a complimentary pre-show MAC Chat or Q&A following specific performances. Our arts center, located in a community college, offers over 60 student productions supported by professional lighting, sound, and costumes. These can be enjoyed at affordable costs, or you can attend our FREE programs like Music Friday at Noon and our free International Global Film series, Global Flicks in February. We hope to exceed your expectations with excellent service and special pre and post-show engagement opportunities. These will help you connect with the artists and art forms more deeply. While you are here, don't forget to visit the Cleve Carney Museum of Art in the lobby to experience cutting-edge contemporary art. You can also enjoy our full-service concession area and gift shop.

After your visit, please stay connected with us by joining us on Facebook (AtTheMAC) or subscribing to our e-newsletter to find out about added shows, events, and special offers (www.AtTheMAC.org). We challenge you to try something new at the MAC and expand your cultural palate. Come see the New Philharmonic Orchestra or a Buffalo Theater Ensemble Play. Or join us this summer for the Lakeside Summer Series. We are grateful for your presence here and we want to ensure that your visit is enjoyable. If you need anything, please don't hesitate to ask any of the staff and we will do our best to accommodate you.

We hope you have a wonderful time and look forward to entertaining you.

Enjoy the show!

Diana Martinez
Director, McAninch Arts Center

McAninch Arts Center at College of DuPage
Presents



CAT KID COMIC CLUB The Musical

CAST

SAMY CORDERO Cat Kid, Molly & Others
TYLER HEPLER Flippy & Others
JIMMY HENDERSON Kip & Others
BRYAN G. SMITH Melvin & Others
BT HAYES Naomi & Others
SAVANNAH TROTTER Starla, Poppy & Others

The McAninch Arts Center acknowledges support from
the Illinois Arts Council Agency.



Friday, Oct. 20, 2023, 7 p.m.
Belushi Performance Hall

MUSICAL NUMBERS

The End
The Cat Kid Comic Club
Dennis the Toothbrush Lawyer for Dinosaurs
Supa Fail!
The Cute, Little, Fluffy Cloud of Death
Chubbs McSpiderbutt
Worst Dad Ever
All About You
Birds, Flowers, Trees
My Sister, Naomi
The Mega-gigantic, Humonga-normous Comic Club Party!

CREATIVE AND PRODUCTION STAFF


NICK MASON Stage Manager
MIRIAM DALY Tour Music Direction
JEN CAPRIO Costume Design
CAMERON ANDERSON Scenic Design
EMMAROSE CAMPBELL Props Supervisor
RYAN JUDA Consultant
MARLO HUNTER Director & Choreographer
KEVIN DEL AGUILA Book & Lyrics
BRAD ALEXANDER Music

TWUSA STAFF

Jillian Carucci Associate Artistic Director
Yanece Cotto Education & Community Engagement Coordinator
Bob Daley Technical Supervisor
Noemi Dean Education & Community Engagement Coordinator - Los Angeles
Louise Diamond Director of Development
Harris Ellahi Ticketing Administrator
Kristen Gensinger Marketing and Communications Manager
Molly Huey Costume Shop Supervisor
Sylvia Jimenez Business Associate
Eliza Johnson Finance and Accounting Supervisor
Heidi Landis Resident Drama Therapist
Steve Lattanzi Director of Systems and Administration
Tegan Meyer General Manager
Brendan J. O'Brien Production Manager
Lisa Petersen Associate Producer – Los Angeles, Orlando
Beth Prather Senior Director of Sales
Maranda Rossi Assistant Costume Shop Supervisor
Josh Sherman Director of Sales & Special Events
Mary St. Angelo Assistant Sales Manager
Avery Varvar Company Manager
Ashley Watson Human Resources Manager
Katie Derwin Assistant Props Supervisor

THANK YOU TO *Our Sponsors*

College of DuPage
FOUNDATION

BANK OF AMERICA 

 BROOKDALE
GENE ELLYN
SENIOR LIVING SOLUTIONS

Frank Modruson
& Lynne Shigley

DuPage
Foundation 

Sullivan Taylor
Family Trust

CLAYCO

Bali®

Anonymous

enjoy
illinois

Wight

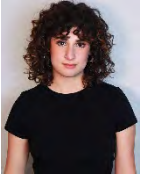
 ILLINOIS
ARTS
COUNCIL
AGENCY

 PUBLIC RADIO
90.9 FM
WDCB

 DOUBLETREE
by Hilton™
LISLE, NAPERVILLE

 JS
ARTS, HEALTH
& EDUCATION
A Fund of DuPage Foundation

CAST PROFILES



SAMY CORDERO (*Cat Kid, Molly & Others*) is so excited to be making her TWUSA Pilkeyverse debut! Favorite theatre credits include *Mud* (Mae), *Amelie* (Suzanne), *Heathers the Musical* (Veronica), and *Runaways* at the ATA Theatre in New York. Cordero has also sung in multiple New York cabarets at Don't Tell Mama's, The Triad, and The Metropolitan Room.

Cordero just graduated from Webster Conservatory of Theatre Arts with a degree in Acting. Thanks to my wonderful family and Janeece for always encouraging me. IG @samycord



TYLER HEPLER (*Flippy & Others*) is so excited to be joining the tour of *Cat Kid Comic Club*! Helper just graduated with their BFA in musical from Penn State. At school, Helper fell in love with new works and breathing new life into classics. Some of their credits include *Family Album* (Tyler), *Cabaret* (Helga), *In-Gauged* (Mythic Mystic), *Nostalgia Night* (Mel), and *A Chorus Line* (Mark).

Helper is so grateful for this opportunity and could not have done it without the endless support from their family, friends, and rep. Thank you for all the help you have given me on my journey! @heplertyle



JIMMY HENDERSON (*Kip & Others*) is supa-dupa excited to be returning to TheaterWorksUSA for another season of making kids laugh. Henderson spent last season as Ralphie in the national tour of *The Magic School Bus: Lost in the Solar System*! Other credits: *Addams Family* (Pickleville Playhouse); *Joseph and the Amazing Technicolor Dreamcoat*, *Man of La Mancha*, *She Loves Me*, (Utah Festival Opera and Musical Theatre); *The Secret Garden*, *Freaky Friday* (Hale Centre Theatre); *Ordinary Days* (Covey Center for the Arts); *Star of Wonder* (West Valley Performing Arts); BFA in Music Dance Theatre (BYU); "Shoutout to my nephews, Cal and Walter! Love you, boys!"; @jimmyhendersonactor(IG); jimmyhendersonactor.com



BRYAN G. SMITH (*Melvin & Others*) is an actor, singer, writer (and more!) from New Orleans, LA. Smith is so happy to continue touring the country with TheaterWorksUSA! He hopes that you enjoy the show, and sends all his love to his family and friends. You can follow him @bryohbry or visit www.bryangsmith.com to see more!



BT HAYES (*Naomi & Others*) (she/they) thinks this show is awesome. She would watch it fifty-nine times if she could. But she can't even watch it once because she's in it. It's not fair. Previous acting credits include *From the Heart of the Wreck* (Cape Rep) and *The Hello Girls* (McCarter Theater). When not

CAST PROFILES

playing a yellow baby froggy, Hayes directs and writes theater. Recently, she held a reading for her original play *500 Rats: A Love Story*. She loves to read books, learn languages, and hang out with dogs and cats as much as possible. Much love and thanks to her NYC lover, Princeton friends, and Pittsburgh family! You can find cool junk on her website! www.bthayes.com



SAVANNAH TROTTER (*Starla, Poppy & Others*) (she/her) is beyond thrilled to be touring again with TWUSA! Recent credits include: Janet in *The Magic School Bus: Lost In the Solar System* (Nat'l tour, TWUSA); *Harry Potter: A Yule Ball Celebration* (Fever/Warner Bros); and Kathy and U/S Doralee in *9 to 5* (CAP21 MainStage). Originally from Des Moines, IA, Trotter received her BFA in Musical Theatre from CAP21/Molloy last year. Trotter would like to thank her parents for their endless love and support, and everyone at TheaterWorksUSA for encouraging creativity and individuality in kiddos across the country! IG: @savannah_trotter

Dining Partners

Eat, drink & enjoy -
MAC dining partners

For all your pre-show meals and post-show bites, we are thrilled to be partnering with these neighborhood restaurants. Our dining partners offer MAC patrons exclusive discounts and special offers. All MAC ticket orders receive coupons to these local favorite restaurants!

a toda madre

ADELLE'S
FINE AMERICAN FARE

GLEN PRAIRIE
LOCAL FLAVOR
FINE FOOD & DRINK

Santa Fe
Mexican Restaurant

RESERVE
22
RESTAURANT BAR EVENTS

NOBEL HOUSE

CREATIVE AND PRODUCTION PROFILES

NICK MASON (*Stage Manager*) is a Stage Manager based out of North Carolina who loves traveling, working backstage, and surfing. Touring has been his goal ever since he graduated from UNC-Wilmington, and he is beyond excited to be on the road with this production. His favorite shows he has worked on are *A Comedy of Errors*, *The Drowsy Chaperone*, and *Talley's Folly*.

MIRIAM DALY (*Tour Music Direction*) is a composer/music director based in Brooklyn, NY who has music directed many TheaterWorks USA shows including *Dog Man*; *Pete The Cat*; *Pete's Hollywood Adventures*; *Click Clack Moo*; *Curious George*; *Henry and Mudge*; *Junie B. Jones*; *A Christmas Carol*; *Mike Mulligan and His Steam Shovel*; *Fly Guy*; and the movie musical: *We The People*. As a composer she was a 2007 recipient of NYC's The York Theatre's "New Emerging Outstanding Artist" award for her work. She is a graduate of Eastman School of Music (Dean's List) and NYU's Graduate Musical Theatre Writing Program.

JEN CAPRIO (*Costume Design*) Broadway: *Spamalot* (2023 Revival), *Falsettos* and *The 25th Annual Putnam County Spelling Bee*. National/International: *Falsettos*, *Joseph...*, *The Lion* (West End/US Tour), *...Spelling Bee* (US Tours) and various rock revues for Norwegian and Celebrity Cruise Lines, Hershey Park and the IBEROSTAR resorts in Mexico. New York: City Center Encores!, Audible/Minetta Lane, Second Stage, Manhattan Theatre Club, Roundabout, Primary Stages, Cherry Lane, LaMama, ETC and others. Regional: Over 150 LORT and Opera productions including collaborations at The Kennedy Center, The Guthrie Theater and her hometown theater, Papermill Playhouse. TV: *Falsettos* (PBS Great Performances) *Sesame Street* (seasons 47-54), *The Not-Too-Late Show with Elmo* (Seasons 1-2) *Manhunt* (Apple TV+) and *Tiny Time Travel* (PBS/YouTube). 2019, 2020, & 2021 Daytime Emmy Nomination, 2020 Daytime Emmy Winner for *Sesame Street*. www.jencaprio.com Instagram: @jencapriocostumedesign

CAMERON ANDERSON (*Scenic Design*) is an internationally acclaimed scenic and projection designer and has designed extensively at the world's leading theatre and opera companies. Recent projects include popstar Charlie Puth's North American Tour, and world premiere opera *RUR: A Torrent of Light* (Tapestry Opera, Toronto), which won the Best New Opera in North America award (MCANA). Other recent highlights include *West Side Story* (Kilden Performing Arts Center, Norway and Vancouver Opera), and *Simon Boccanegra* (Teatro Colon, Argentina), *Byhalia Mississippi*

CREATIVE AND PRODUCTION PROFILES

(The Kennedy Center), *The Niceties* (Manhattan Theatre Club), *Yerma*, *Becoming Cuba*, and *Sweat* (Huntington Theater), *Fille du Regiment*, *The Consul*, *Vinkensport*, *The Merry Widow*, and *Rocking Horse Winner* (Opera Saratoga), and *Photograph 51* (South Coast Repertory). Select Off-Broadway credits include Roundabout Theatre Company, Playwrights' Horizons, New Georges, LAByrinth Theater Company, Naked Angels, Ars Nova, and Brooklyn Academy of Music. Select opera credits include Glimmerglass Festival, San Francisco Opera, Seattle Opera, Central City Opera, Minnesota Opera, Opera Theater of St. Louis, Gotham Chamber Opera, and On Site Opera. Cameronanderson.net

EMMAROSE CAMPBELL (*Props Supervisor*) is a NYC-based prop designer and performer. Recent designer credits include *On Your Feet!* (2022-23 Nat'l Tour), *Every Brilliant Thing* (JAG Productions), and *A Charlie Brown Christmas Live* (2021 and 2022 Nat'l Tours). She currently holds a BFA in Theatre and minor in Dance from Emerson College (Class of '19). She would like to thank espresso and glue guns for getting her here. insta: @emmarosegcampbell www.emmarosegcampbell.com

RYAN JUDA (*Consultant*) is a Florida born, NYC based artist, stage manager, and technician. Broadway: *A Strange Loop*, *A Doll's House*, *Prima Facie*; Off-Broadway: *Cat Kid Comic Club: The Musical* (TheaterWorksUSA), *The Great Divorce* (Theatre Row), NYC: Technical Collaborator with the New York Neo-Futurists, *A Streetcar Named Desire* (Wolfpack Theatrics), Touring: *Dog Man: The Musical* (TheaterWorksUSA), *Dragons Love Tacos...* (TheaterWorksUSA). Ryan holds a BFA from Emerson College in Boston. Follow them @ryanjuda

MARLO HUNTER (*Director & Choreographer*) is a theater & film director and a "2022 Woman to Watch on Broadway". She made her feature film directorial debut with *American Reject* in 2022 (Amazon and Apple+). She's currently helming the *Ever After* musical with music by Zina Goldrich, lyrics by Marcy Heisler, and book by Heisler & Kate Wetherhead, produced by Kevin McCollum. Hunter has directed, choreographed, and developed new work at Second Stage, Long Wharf, Williamstown, Roundabout, Playwrights Horizons, EST, Pittsburgh CLO, and Bay Street, among others. She is the winner of the Callaway Award for *Unlock'd*, which she directed & choreographed Off-Broadway. Hunter recently directed *Mystic Christmas* for Hallmark, which will air in the holiday 2023 season (starring Jessy Schram, Chandler Massey & Patti Murin). BA in English/Dramatic Literature – Princeton University. www.MarloHunter.com

CREATIVE AND PRODUCTION PROFILES

KEVIN DEL AGUILA (*Book & Lyrics*) is an Emmy-winning writer and Tony-nominated performer, currently playing Osgood in *Some Like It Hot* on Broadway (Drama Desk Award). He wrote the book and lyrics for TheaterWorksUSA's *Dog Man: The Musical* as well as *Cat Kid Comic Club: The Musical*, and is the book-writer of the off-Broadway comedy *Altar Boyz* (NY Outer Critics Award) and lyricist of *Click Clack Moo* (Lortel and Drama Desk noms). Other writings include musical stage adaptations of the DreamWorks film *Madagascar* and the wildly popular book series *Diary of a Wimpy Kid*. He's written for numerous children's TV shows, including *Peg + Cat* (PBS), *Waffles + Mochi's Restaurant* (Netflix and the Obamas' Higher Ground), and was head writer of *Blue's Clues & You* (NickJr) and *Clifford The Big Red Dog* (Amazon/PBS). His lyrics can be heard in songs featured in the Disney animated movie *Strange World* and children everywhere have heard Kevin's voice as a singing Troll in the Disney movie *Frozen*.

@kevinoftheeagle

BRAD ALEXANDER (*Music*) wrote the music for *See Rock City & Other Destinations*, recipient of The Richard Rodgers Award, The BMI Foundation Jerry Bock Award, and Drama Desk Award for Outstanding Book of a Musical. He's written the music for numerous TheaterWorksUSA shows including *Cat Kid Comic Club: The Musical*, *Dog Man: The Musical* (cast album available on Amazon, Apple Music, Spotify and more) and *Click Clack Moo* (Drama Desk, Lortel nom), and he was a contributing composer for *Fly Guy & Other Stories*, *Duck For President & Other Stories*, and *We The People: America Rocks!* (Lortel nom). Brad's TV credits include Lead Composer for *Clifford The Big Red Dog* (Scholastic/Amazon/PBS Kids), five episodes of PBS's Emmy Award-winning *Peg + Cat*, and VH1's "Celebreality" campaign. Current musical projects: *Misty Makes It Better* and *Bread and Roses*, based on the film by Ken Loach and Paul Laverty. Brad is a member of NAMT, The Dramatists Guild, SAG-AFTRA, and The BMI Lehman Engel Musical Theatre Workshop. bradalexander.com



ACTORS' EQUITY ASSOCIATION, founded in 1913, represents more than 45,000 actors and stage managers in the U.S. Equity negotiates wages and working conditions, providing a wide range of benefits, including health and pension plans. Equity seeks to foster the art of live theatre as an essential component of our society. www.actorsequity.org.



THE STAGE DIRECTORS AND CHOREOGRAPHERS SOCIETY (SDC), founded in 1959, is the theatrical labor union that unites, empowers, and protects professional stage Directors and Choreographers throughout the United States. SDC's mission is to foster a national community of professional stage Directors and Choreographers by protecting the rights, health, and livelihoods of all its Members. SDC seeks to facilitate the exchange of ideas, information, and opportunities while educating current and future generations about the role of Directors and Choreographers and providing effective administration, negotiations, and contractual support for over 2,000 Full Members and over 1,000 Associate Members.



THEATERWORKSUSA (Barbara Pasternack, Artistic Director; Michael Harrington, Executive Director) has led the Theater for Young and Family Audiences movement in New York City and across North America for over half a century. At TWUSA, we believe that access to art—and theater, in particular—is vital for our youth. Since 1961, the 501(c)3 not-for-profit has captured the imaginations of 100 million new and veteran theatergoers with an award-winning repertoire of over 140 original plays and musicals. Acclaimed alumni include Kristen Anderson-Lopez and Robert Lopez (*Disney's Frozen*), Daphne Rubin-Vega (*Rent*), Jerry Zaks (*The Music Man*), Benj Pasek and Justin Paul (*Dear Evan Hansen*), Miguel Cervantes (*Hamilton*), Kathleen Chalfant (*Angels in America*), and Chuck Cooper (Tony award winning actor, *The Life*). Prior to suspending live production due to the pandemic, TWUSA's 2019-2020 season included touring eleven shows around the country, the Broadway premiere of *The Lightning Thief: The Percy Jackson Musical* and three world premieres: *Warriors Don't Cry*, based on the autobiography of Melba Pattillo Beals; *Dog Man: The Musical* Off-Broadway; and *The Pout-Pout Fish* which opened the New Victory Theater's season in October 2019. Visit www.TWUSA.org for more information.



CHICAGO'S HOME FOR JAZZ AND BLUES

... and more!

www.WDCB.org

MAKE MUSIC WHERE MUSIC THRIVES

College of DuPage brings 50 years of training and supporting musicians like you in whatever it is you want to do. With a staff of 25 private music instructors, nine ensembles, and four degree and certificate programs, COD is the first choice of serious musicians from the western suburbs and beyond.

For more information

Contact Thomas Stark at (630) 942-2391 or starkt1620@cod.edu.

For ADA accommodations, please email access@cod.edu with the event title in the subject line and your accommodation request. Please email two weeks in advance.

 **College of DuPage**

The MAC offers all of this for you,
but we can't do it without you!



**YOUR GIFT HELPS PROVIDE CULTURAL VITALITY
THAT ENRICHES AND ENTERTAINS!**



GIVE TODAY! TO SUPPORT THE MAC,
visit us at foundation.cod.edu or call (630) 942-3088



**College of DuPage
FOUNDATION**

(630) 942-3088 | foundation@codfound.org | foundation.cod.edu

Friends of the MAC

The Friends of the MAC is a family of those who have decided that a world-class performing and visual arts center should reside in their community. Ticket sales provide only 42 percent of our \$4 million operating budget. It is through the support of College of DuPage and through the generous gifts from patrons and local businesses that we can keep art in our museum and on our stages.

Your Gift to the MAC

- Brings nationally and internationally renowned artists to our community
- Supports our SchoolStage program that annually offers affordable arts experiences to thousands of schoolchildren
- Provides students and community members the opportunity to interact with artists
- Enhances quality of life in our community

Without the generous support of the Friends of the MAC, we would not be the beacon for the arts in DuPage County. We gratefully thank our friends, and we invite others to join them.

Arts Center and MAC-tastic Treat Seats Endowments

Donor may choose to direct gifts to the Arts Center Endowment or the MAC-tastic Treat Seats – Tickets for Kids & Families Endowment. Donations made to these MAC Endowments, our “savings accounts,” go into principal secured, invested accounts that will provide ongoing support for arts programs and arts accessibility for years to come.

The McAninch Arts Center and the College of DuPage Foundation can also provide you with information on planned giving options, gifts of stock, IRA Charitable Rollovers and other giving opportunities.

For complete details, visit the MAC Box Office or contact the College of DuPage Foundation at (630) 942-2462 or foundation@codfound.org.

College of DuPage
FOUNDATION 

FRIENDS OF THE MAC

McAninch Arts Center acknowledges and gives grateful thanks to those donors who have contributed in support of the MAC mission and vision. This list of donors reflects contributions made from Dec. 1, 2021 – Aug. 31 2023. While we carefully prepared this list, we recognize that errors may have occurred. Please accept our apology if you are not properly represented on this list and contact the College of DuPage Foundation at (630) 942-2462 so we may correct our records.

Leadership Circle (\$5,000 and up)

Anonymous (5)
Anna Ball
Bank of America
Brookdale Glen Ellyn Senior
Living Community
Mr. Todd Buckton
Dr. and Mrs. Christopher B.
Burke
Mrs. Clark G. Carpenter
Ryan T. Christian
Clayco
Consolidated Flooring
Dr. and Ms. Mark A. Curtis-
Chavez
DuPage Foundation
Enertherm Corporation/Russ
& Judy Flores
Follett Higher Education Group
Frank B. Modruson Lynne C.
Shigley Family Charitable
Fund
Mr. David J. Frank
G. Carl Ball Family
Foundation
JCS Fund of DuPage
Foundation
Mr. and Mrs. Richard
Komarek
Legat Architects, Inc.
David and Carolyn May
Dr. and Mrs. Harold D.
McAninch
Margaret and Michael McCoy
Jane E. Moore
Joan Morrissey
Nicor Gas
Mr. and Mrs. Mark A.
Peterson
John Rutledge and Betty
Joseph
Charles Schlau
Mr. and Mrs. Frank
Shoemaker
STG Divorce Law
Terrence J. Taylor and
Maureen Sullivan Taylor
TJ Moore Giving Fund -
Fidelity Charitable
TM Financial Forensics, LLC
Mr. and Mrs. Avram Tucker
Wight & Company

Mark Wight and Eszter
Borvendeg
Mr. and Mrs. Mark Wright

Encore Circle (\$2,500–\$4,999)

Lowell and Barbara Anderson
Mr. and Mrs. Mark F. Baggio
Dr. and Mrs. Brian W. Caputo
John and Pamela Dalby
Raju Datla
Mr. Ryan M. Ellison
Debbie Fulks
Greg and Alexandra Hart
Mr. Dennis Hiffman
Representative Terra Costa
Howard and Nick Howard
Mr. Robert Hutchinson
Mr. and Mrs. Walter J.
Johnson
Mr. and Mrs. James H.
Knippen, II
Karen and Gene Kuhn
Mr. and Mrs. Richard Lamb
And Susan and Richard
Lamb Charitable Fund of
The DuPage Foundation
Katherine and Gary Lietz
Mr. and Mrs. Mike Macakanja
Marilyn H. Wolff Foundation
Ms. Diana L. Martinez
State Rep. Deanne M.
Mazzochi
Rowan Miranda
Ms. Barbara Murphy
Drs. Donald E. and Mary
Ellen Newsom
Mr. and Mrs. Richard Nye
Judith May O'Dell
Joan and Bob Olach
Dorothy I. O'Reilly
Meri Phillips
Kelly and Roland Raffel, in
memory of Herbert K.
Raffel
Gary and Mary Rash
Kenneth and Cathryn Reick
Mr. Paul Rom
Sander's Fine Portraits
Mr. and Mrs. Steven E. Shebik
Kristin and Peter Shulman
TC WealthPartners/Trust
Company of Illinois

John and Colleen Tovar
James and Patricia Vary
Vistex, Inc
West Suburban Art Society
Dr. Donald G. Westlake
Wheaton Bank and Trust - A
Wintrust Community Bank
Hon. Bonnie M. Wheaton
Wintrust Financial Corp
Ms. Kathleen Yosko

Director's Circle (\$1,000–\$2,999)

Anonymous (6)
Robert and Lynne Anderson
and Robert and Lynne
Anderson Charitable Fund
of US Charitable Gift Trust
Dana Andrewson
Ms. Nancy Arango
Ms. Charlotte Babitzke
Joseph and Betsy Ballek
Milt and Heide Bentley
Prof. and Mrs. Charles E. Boone
Ronald and Hope Bucher
Connie Canaday Howard and
Rex Howard
Cantigny Golf Club
Chef by Request Catering
Cray, Kaiser, Ltd.
Mr. and Mrs. Philip W.
Denemark
Janet Derber
James and Marie Drasal AND
Drasal Family Fund of
Fidelity Charitable Gift Fund
Rosemary Ellis
Mrs. Carol L. Fox Girovich and
Mr. Howard Girovich
The Giragos Family, in memory
of Dr. Henry G. Giragos and
Jeanette N. Giragos
Bill Gladden
Mr. and Mrs. Lionel Go
Mrs. Margaret R. Hernandez
Mr. and Mrs. John A. Herndon
Hyatt
Mr. and Mrs. James Klang
Charlene Kornoski-Du Vall
La Quinta Resort & Club
Mr. Larry C. Larson
Linda Lauterbach
Ms. Nancy Lehrer

FRIENDS OF THE MAC

David Leners
 Ms. Elaine Luther
 Norma and Robert Lyon
 Ms. Jennifer Mackey
 Tipton and Marilyn McCawley
 John and Lynette McCortney
 Mr. and Mrs. David Millhouse
 LTC and Mrs. James
 Milobowski
 Bill and Nancy Moore
 Ms. Emi Murata
 Mr. and Mrs. Larry G.
 Murdock
 Mr. and Mrs. Nick Nagele
 Mr. Adam J. Nuger
 Jane Oldfield
 Mr. and Mrs. Robert D. Owen
 Helen Pachay
 Madeleine Pachay
 Linda Picchiotto and Walter
 Habrylewicz
 Mr. and Mrs. Paul P. Pyrcik, Jr.
 Barb and Kell Reimann
 Reliable Home Improvement
 Renaissance Esmeralda
 Resort & Spa
 Ms. Rene' M. Richards
 Al and Cecile Robinson
 The Rev. Dr. Curtis and
 Leanne Rolfe
 Judy Ronaldson
 Mr. and Mrs. Brad Rosley
 Ms. Theresa M. Sak
 Ms. Lisa Sallwasser and Mr.
 Geoffrey Bevington
 Lisa Savegnago and Randy
 Johnson
 Mr. John Schofield
 Mr. and Mrs. Kenneth
 Serwinski and the Kenneth
 and Nancy Serwinski
 Charitable Fund - Schwab
 Charitable
 Mr. and Mrs. John Smith
 Geraldine Smrcina
 Marilyn Smrcina
 Judith S. Thuer
 Angel and Troy Traub
 USG Foundation
 Karen M. Varble
 Mr. and Mrs. Michael R. Webb
 Whiskey Acres
 Scott and Kristen Wiersum
 Mr. Tyler Wisner
 Mr. and Mrs. Ethan Zelizer

Ambassador Circle (\$500-\$999)

Anonymous (4)
 Young Ahn

Mr. and Mrs. Thomas
 Anderson
 Col. and Mrs. Renato P.
 Bacci, Jr.
 Viera Bakova
 Mr. Alvin Barnickel
 Mrs. Eunice Becker
 Emily Bell
 Mrs. Deborah F. Borge
 Mr. and Mrs. Larry Boward
 Mr. and Mrs. James Burdett
 Ed and Kay Burton
 Cabernet & Company
 Capt. Bernardo Iorgulescu
 USMC Memorial Fund
 DuPage Foundation
 Mr. Robert B. Chasteen
 Chicago White Sox
 Community Foundation of
 Will County
 Dr. Helen Dane, DVM
 Cara Degraff
 Senator Kirk Dillard
 Mark and Kim Dorn
 William and Kathleen
 Drennan
 Drury Lane Theatre
 Megan Elberts
 Eugene W. Rzym Giving
 Fund - Fidelity Charitable
 Anonymous Design, Inc.
 Marcela Fanning
 Ms. Marla Felsten
 David and Janet Fox
 James and Nancy
 Gianfrancisco
 Ginni and Chris
 Brian and Lynne Hamm
 Ms. Leah Harding
 Mr. and Mrs. Robert G.
 Hartman
 Health Track Sports Wellness
 Mr. Glenn Hopkins
 Mrs. Beatriz Iorgulescu
 Jon and Ruth Good
 Foundation - Fidelity
 Charitable Fund
 Karl and Lee Ann Karnatz
 Virginia and Charles
 Klingsporn
 Ms. Marilyn Kloc
 Mr. Mike Klopmeier
 Ida Lee
 Ms. Alixe Lischett
 Mr. and Mrs. Derryk A.
 Madsen
 Mr. and Mrs. Jim Mark
 Mr. and Mrs. William E.
 Matte, Jr.
 Joseph McConellogue

Mr. and Mrs. David M.
 McGowan
 Mr. Donald E. McGowan and
 Ms. Mary L. Prazak
 Mr. and Mrs. Charles
 Meagher
 Michael and Sandra Meyers
 Gary Miller
 Mr. and Mrs. Michael
 Morrissey
 Mr. and Mrs. Brian Nugent
 Karen Webb Owen
 Jim and Lorraine Paulissen
 Mrs. Edie Postiglione
 Stephanie Powell
 Ginny and Don Raths
 Mr. and Mrs. Randall Riley
 Ms. Donna Romero
 Mr. and Mrs. James Ryan
 Mr. Eugene Rzym And the
 Eugene W. Rzym Giving
 Fund of Fidelity Charitable
 Mr. and Mrs. Bruce Sewick,
 LCPC
 Mike Sitrick
 Skeet and Laura Skeet
 Sutton Studios
 Dr. Eric H. Swanson and Mrs.
 Lori A. Swanson
 Rhea Vytlacil
 Western Springs Music Club
 Jo Anne Zipperer

Performer (\$250-\$499)

Anonymous (3)
 Mr. and Mrs. Lewis R.
 Achenbach, III
 Mr. and Mrs. Bruce A.
 Adamec
 Mr. and Mrs. Keith E. Allen
 Mr. and Mrs. Brandon
 Anderson
 Mr. Raymond Arenson
 Arrowhead Golf Club
 Vickie Austin
 Amelia Barrett
 Jack and Mary Ellen Barry
 Gayle and Don Bartell
 Biff Behr and Lynne Richman
 Jim and Sandy Boves
 Mr. Franklin E. Boves
 Breakthru Beverage Group
 Cecilia and William Bulger
 Christina Burke
 Mike Calabrese
 Greg and Janet Chejfec
 Mr. and Mrs. Alan L. Clark
 Ms. Patricia Conway
 Cornerstone Restaurant
 Group

FRIENDS OF THE MAC

Costello Jewelry
 Ms. Carol Cousin
 Mr. James M. Cronin
 Bill Curry and Gretchen Fleming
 Sharon D'Alessandro
 Dempsey-Musker
 George W. and Ann Dervis
 designSPEAK Ilc
 Marilyn and Gene Dicola
 Barbara DiGuido
 Ms. Mira Maureen Dolph
 Ms. Anita Dykema
 William and Sally Newton Fairbank
 Tony Freeman
 Kim Hahn
 Suzanne and Leo Hart
 Lance Herning and Nancy Redmond
 Sue Hervey
 Ms. Jane Hoyum
 Mr. and Mrs. Frank C. Hudetz
 Ms. Gail Kalinich
 John P. and Catherine M. Kos
 Mr. Dale J. Kuby
 Gregory and Kristine Larsen
 Le Meridien Chicago Oak Brook
 Mrs. Anne Leventry
 Ms. Donna J. Luce
 Mr. and Mrs. Edward Makauskas
 Ms. Maureen Malloy
 Marcel's Culinary Experience
 Barb and Scott Marquardt
 Ellen and Daniel McGowan
 Florine McKay
 Ms. Jill McWilliams
 Mr. and Mrs. John Meier
 Dr. John Messitt
 Mr. and Mrs. Kenneth Metcalfe
 Matt Mouw
 Ms. Allison Odak-Dolph and Mr. Frank Pecora
 Olive 'N Vinnie's Oil and Balsamic Bar
 Gayle Orlando
 Mr. and Mrs. William Parker
 Ms. Erin Peterson
 Mr. and Mrs. Mark Pfefferman
 Rohan and Merlyn Phillips
 John J. and Mary A. Plunkett
 Karina Ramos
 Ms. Diane G. Rath
 Ms. Patricia Read
 Joel Riley

Ms. Kaylin Risvold
 Ms. Yolanda E. Rocio
 Arun Roy
 Tina Rudins
 Janey Sarther
 Mr. Larry Schouten
 Gerry Sczygiel
 Mr. and Mrs. Richard J. Sieracki
 Mrs. Marilyn A. Steenwyk
 Cherry Stoddard
 Mr. and Mrs. Phil Tarallo
 Anthony and Mona Taylor
 Mr. and Mrs. James Taylor
 Ms. Candy Theobald
 Paul Thompson
 Mr. Stephen Thompson
 Mr. and Mrs. Garry Vaccaro
 Mr. David Victor
 Kathryn Voland-Mann and Bob Mann
 Mr. and Mrs. Gus Vonderheide
 Penelope Wainwright
 Mr. and Mrs. Thomas Wcisel
 and the Wcisel Charitable Fund of Schwab Charitable
 Mr. and Mrs. Anthony J. Wdowiarz
 Ms. Kathy Wessel
 Rich and Kathy Wilders
 Ms. Kathleen M. Wright
 Mr. and Mrs. Robert Wulffen
 Yorktown

Friend (\$50-\$249)

Anonymous (23)
 Tony Achilles
 Sue Adams
 Peggy Aldworth
 Lisa Ancona-Roach
 Mrs. Lynnette Arendt
 Mr. and Mrs. Mike Armbrust
 Ms. Christine A. Aument
 Aurora Civic Center Authority
 Darlene Barger
 A. C. Barnicle
 Ms. Constance Barreras
 Harold and Karen Bauer
 Ms. Colleen Bell
 Daniels Family
 Belleza Skin Care Institute
 Mr. Edwin Berndt
 Mr. Gregory Bewick
 Mr. Leonard Bielefeldt
 Mrs. Germaine Bird
 Mr. and Mrs. James Borus
 Ms. Joan Brady
 Dr. and Mrs. Michael Bresolin

Broadway in Chicago
 Ms. Joanie Brosnan
 Mr. George Bruce
 Bubblehouse Brewing Company
 Perry and Julie Bump
 Mildred and Harold Burrow
 Mr. and Ms. Mark Bussey
 Ms. Virginia Cantu
 Ruth and Ken Carlson
 Ms. Jennifer Carrillo
 Jim Carsten
 Mr. Joseph Cassidy
 Mr. and Mrs. Sean Casten
 Mr. Bruce Caster
 Chawla & Associates CPAs
 Ms. Diana Christopher
 Mr. and Mrs. Mike Cittadino
 Clayspace Ceramic Arts Center
 Ms. Ann E. Cliff
 Megan and Peter Clifford
 Ms. Kathi Clinton
 Judy Coates
 Ms. Linda Coen
 The Collective, A Lifestyle Boutique
 Cooper's Corner
 Marty and Mary Cosgrove
 The Crafty Shop & Supplies
 Creme de la Creme Boutique
 Robert Culler
 Ms. Diane M. Curtis
 Ms. Katherine Damitz
 Jeanne Davik
 Joy and Ron Detmer
 Ms. Rosalinda Dominguez
 DoubleTree by Hilton Lisle Naperville
 Ms. Alice Douglas
 Jenny Dunbar
 Mr. and Mrs. Bernard L. Eddy
 Daniel Edelman and Fran Kravitz
 Ms. Jennifer Evans
 Miles Evans
 Expedia
 Christine and Craig Fenne
 Mr. and Mrs. Donald H. Fischer
 Ms. Gretchen Fleming
 Eric and Marilyn Fors
 Fox Valley Park District
 Ruta Freimanis
 Jay French
 William Fullriede
 Mr. and Mrs. Edward Fussner
 Ms. Victoria Gacki
 Jan Gahala
 Mary Jane Garrett

FRIENDS OF THE MAC

Jody Gauthier
 Mr. Christopher A. Gekas
 Mr. and Mrs. Daniel Glab
 Dr. Gloria Golec
 Mr. Gerald W. Good
 Goodman Theatre
 Ms. Karen Hanmer
 Ms. Sheila M. Hanssen
 Lubna and Faraz Haque
 Diana and Gary Harper
 Rebekah and Rodney Harris
 Mr. and Mrs. Thomas R.
 Hattan
 Brad and Vicky Hauserman
 Mr. and Mrs. James Helt
 Susan S. Hennig
 Kathleen Herbach
 Ms. Erin Herman
 Ron Hilton
 Ms. Martha A. Hirsch
 Richard and Shirley Holt
 Judy A. Hoskins
 Hyatt Lisle
 Stephanie Iglehart
 Mr. and Mrs. Kevin R. Illia
 Ms. Pam Imbeau
 Mr. Charles Jakubowski
 Ms. Joanne Jannsen
 Ms. Adriana Janutka
 Jennifer Rizzo Design
 Company
 Ms. Jean M. Jeske
 Edward and Susan Jeszka
 Mary Ann Jirak
 Mr. and Mrs. Tomas
 Johansson
 John P and Catherine M Kos
 Charitable Fund
 Jolie Charcuterie
 Ms. Lee Ann Jones
 Alisa Jordheim
 Cory Kammer
 Ms. Ileen Kelly
 Kendra Scott
 Ms. Violet Kerbbel
 Mr. Lee R. Kesselman
 Ms. Bernadette Kniebusch
 Ms. Carole Kohout
 Ms. Deborah A. Kolek
 Elaine and Roger Kolman
 Ms. Beth Komel
 Ms. Anne Kopke
 Ms. Lori Kramer
 Ms. Shelley Krause
 Ms. Barbara L. Kristen
 Mary Krska
 Ms. Serena Krush
 Mr. John L. Ladle, Jr.
 Ms. Kathryn S. Lahey
 Mr. and Mrs. William Laing
 Gourmet Express Marketing,
 Inc.
 Ms. Kathleen Graffam
 Ms. Aldona Green
 Ms. Adrienne Gregory
 Ms. Cathy Griffin
 Emile Lattyak
 Ms. Lea Lazarus
 Ms. Kristen Lenhardt
 Ginny Lennon
 Mr. and Mrs. John Liedtke
 Travis Linderman
 Lisle Chamber of Commerce
 Lisle Library Dist.
 Lisle Park District
 Ms. Mary Locher
 Mr. and Mrs. Andrew Luce
 Liz Luszczek
 Lynfred Winery
 Bob Machacek
 Maggiano's Little Italy
 Thomas Manak
 Marinella's Ristorante Italiano
 Ms. Shannon Marsden
 Ms. Marion S. Martin
 Diane Maurer
 Ann McDonald
 Marty and Marian McGowan
 Ms. Susana Melgoza
 Jackie Micek
 Mr. and Mrs. Craig Miller
 Ms. Liz Minogue
 Ms. Cheryl R. Moen
 Daniel and Marilyn
 Montgomery
 Mr. and Mrs. Michael Moon
 Ms. Kimberly G. Morris
 Bud and Pat Motz
 Ms. Lois Mouhelis
 Terry Mueller
 John Mulherin
 Ms. Melanie J. Murphy
 Dr. Jim Murray
 Barbara and Ted Nagengast
 Mr. and Mrs. Tom Newmann
 Kathy Culver Nickell
 Michael and Judith Nigro
 Ruth Oberg
 Ms. Sharon L. Ochwat
 Mr. and Mrs. Glenn Ohlson
 Ms. Judith W. Olson
 Tom and Karen Ostrander
 Alice E. Packard
 Mr. and Mrs. Anthony G.
 Padgett
 Mr. Kenneth Paoli
 Patricia Paolicchi
 Kurt Parent
 Byrd and Alice Parmelee
 Past Presence Framing
 Ms. Wanda Gustas
 Sarah Gutierrez
 Donna Guy
 Ms. Amy Hollowell
 Mr. Rich and Mrs. Deb Hall-
 Reppen
 TD Paulius
 Ms. Kimberly Peckenpaugh
 Thomas and Amy Perkins
 Ken and Maria Peterson
 Mr. and Mrs. Patrick
 Peterson
 Robbie Plank
 Sarah Poeppel
 Quintin Porter
 Portillo's Restaurant Group
 Ms. Karen Poulos
 Ms. Lynda Pratscher
 Dale Prest
 Pulse Studio
 Puttshack
 John and Mandy Rakow
 Ms. Ruth Anne Rehfeldt
 Jackie Reich
 Ms. Tracey J. Reid
 Ms. Alesha Renee
 Mr. and Mrs. Kenneth
 Robbins
 Mr. Dennis Rockett
 Mr. Bruce Rodman
 Mr. Eric Rodriguez
 Nancy L. Ruby
 Douglas and Barbara Rundell
 Sandra Sansone Brennan
 Mr. Russ Scanio
 Ms. Maureen Schoenbeck
 Ms. Jane E. Schubert
 Scrim Esports Gaming
 Center
 Ms. Sherie Shapiro
 Ms. Vicki L. Shargo
 Sheraton Hotel
 Mrs. Kristie Shinohara
 Shiny Squirrel Art Studio
 Ms. Susan Simek
 Mr. and Mrs. Todd Simmons
 Mrs. Helen W. Sladek
 Barbara Smith
 Ms. Rose M. Soraich
 Mrs. Sherry Spengel
 Mr. Paul Spotts
 Lynn St Germain
 Mr. and Mrs. D. G.
 Stephenson, Jr.
 Ms. Cheryl Stoneking
 Melissa Striedl
 Norma C. Stroner
 Ms. Angela Stroud
 Mr. and Mrs. Frank Studnick
 Su Ki's Salon

FRIENDS OF THE MAC

Ms. Melissa Sullivan
 Dr. William Scheftner and
 Mrs. Sheila Susman-
 Scheftner
 Suzette's Creperie
 Dr. Nancy Svoboda
 Dr. Diane R. Szakonyi
 Kasia Szczesniwski
 Tom and Janet Szot
 Ms. Helen B. Szymanski
 Ms. Kathleen Talenco
 Mr. and Mrs. Sam Taves
 Ms. Laverne Tedeski
 Mr. John Teschky
 TIAA
 Colleen and Paul Trinko
 Jean S. True
 Two Bostons
 Patricia and Anthony Vahcic
 Ms. Lisa Vargas
 Ms. Francine Venegas
 Ms. Deborah L. Venezia
 Viki Vestuto
 Village Links of Glen Ellyn
 Susan Vogt
 Walden Floral Design Co.,
 Inc.
 Ms. Cathleen Wallin
 Larry Ward
 Mr. and Mrs. Bill Wash
 WBEZ 91.5 Chicago
 Judy Webster
 Patricia and Richard Weichle
 Anne and Jim Wengerd
 Scott and Danielle Wette
 Mr. and Mrs. Michael
 Wheeler
 Robert and Jeanne Whisler
 Debbie Whiston
 Joan and Raymond Wielgos
 Lenore Wilcox
 Ms. Sandra Wildermuth
 Ms. Kathy Wilders
 Mr. William Womack
 Diane Meiborg and Roger
 Zacek
 Mr. Richard Zuckerman

**Corporate and Community
 Sponsors**
 A Toda Madre
 Adelle's Fine American Fare

Anonymous Design, Inc.
 Arrowhead Golf Course
 Aurora Civic Center Authority
 Bank of America
 Ball Horticultural Company
 Belleza Skin Care Institute
 Breakthru Beverage Group
 Broadway in Chicago
 Brookdale Glen Ellyn
 Bubblehouse Brewing
 Company
 Cabernet and Company
 Cantigny Golf Course
 Chef By Request Catering
 Chicago White Sox
 Clayspace Ceramic Art
 Center
 Clayco
 The Collective
 College of DuPage
 Foundation
 Consolidated Flooring
 Cooper's Corner
 Cornerstone Restaurant
 Group
 Costello Jewelry
 The Craft Shoppe & Supplies
 Cray Kaiser, Ltd.
 Crème de la Crème Boutique
 designSPEAK, LLC
 DoubleTree by Hilton Lisle
 Naperville
 Drury Lane Theatre
 DuPage Foundation
 Enertherm
 Enjoy Illinois/Department of
 Commerce and Economic
 Opportunity
 Follett
 Fox Valley Park District
 G. Carl Ball Family
 Foundation
 Glen Prairie
 Goodman Theatre
 Gourmet Express Marketing,
 Inc.
 Health Track Sports Wellness
 Hyatt/Hyatt Lisle
 Illinois Arts Council Agency
 Jennifer Rizzo Design
 Company
 Jolie Charcuterie

JCS Fund of the DuPage
 Foundation
 La Quinta Resort + Club
 Le Meridien Chicago Oak
 Brook
 Legat Architects, Inc.
 Lisle Chamber of Commerce
 Lisle Library District
 Lisle Park District
 Lynfred Winery
 Marcel's Culinary Experience
 Maggiano's Little Italy
 Marinella's Ristorante Italiano
 Nicor
 Nobel House
 Nothing Bundt Cakes
 Olive 'N Vinnie's
 Past Presence Framing
 Portillo's Restaurant Group
 Pulse Studio
 Puttshack
 Reliable Home Improvement
 Renaissance Esmeralda
 Resort + Spa
 Reserve 22
 Santa Fe Restaurant
 Scrim Esports Gaming
 Center
 Sheraton Hotel
 Shiny Squirrel Art Studio
 STG Divorce Law
 Su Ki's Salon
 Sutton Studios
 Suzette's Creperie
 TC Wealth Partners
 TM Financial Forensics, LLC
 Two Bostons
 Village Links
 Vistex, Inc.
 Walden Floral Design Co.,
 Inc.
 WBEZ
 90.9FM WDCB
 West Suburban Art Society
 302 Wheaton
 Wheaton Bank and Trust-A
 Wintrust Community Bank
 Whiskey Acres
 Wight and Company
 Wintrust Financial
 Corporation
 Yorktown

HOUSE NOTES

- Cameras and recording devices are not allowed in the theater and are prohibited by our contracts with the artists.
- Smoking is not permitted in the theater or on campus.
- For your comfort and security, all backpacks and large bags must be checked.
- Please turn off all cell phones and any other alarms while in the theater.
- Emergency phone number at COD Police Department for after-hour calls is (630) 942-2000.
- Latecomers seated at discretion of the House Manager.
- Groups of 10 or more may contact (630) 942-3026 or grouptix@cod.edu to arrange for group discounts.
- If you notice a spill in the theater, please notify an usher.
- McAninch Arts Center volunteers are people who assist the house staff in areas of ticket taking, ushering and general management during performances. To get involved, call (630) 942-3705.
- For **Americans With Disabilities Act** accommodations, call (630) 942-2141 (voice) or (630) 858-9692 (TDD).
- **Infrared Assistive Listening Devices:** For audience members who desire audio amplification of performances, headsets with individual volume controls are now available. You may check out the headsets at the Box Office with a driver's license. *Underwritten by a generous gift from The Knowles Foundation.*

MAC STAFF LISTING

MAC Administrative Staff

Director of the McAninch Arts Center.....	Diana Martinez
Business Manager.....	Ellen McGowan
Project Manager.....	Kari Schoettle
Business Office Assistant.....	Brianna Garcia
Curator, Cleve Carney Museum of Art.....	Justin Witte
Assistant Curator.....	Julia Walker
Gallery Assistant.....	Maria VanDyken Li
Marketing and Patrons Services Coordinator.....	Janey Sarther
Director of Development for Cultural Arts.....	Janie Oldfield
Administrative Assistant.....	Mandy Rakow
Student Clerical Assistant.....	Blake Lietz

MAC Box Office and Front of House Staff

Box Office Manager.....	Julie Elges
Assistant Box Office Supervisors.....	Jim Gosling, Elise Wash
Box Office Assistants.....	Patrick Garon, Tatia Hegranes
Patron Services Manager.....	Tom Murray
Assistant Patron Services Supervisor.....	Deborah Kolek
House Manager/Volunteer Coordinator.....	Rob Nardini

MAC Resident Professional Ensembles

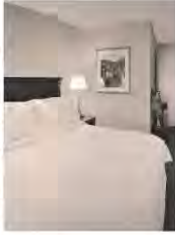
Buffalo Theatre Ensemble, Artistic Director.....	Connie Canaday Howard
Buffalo Theatre Ensemble, Associate Artistic Director.....	Amelia Barrett
Buffalo Theatre Ensemble, Business Manager.....	Bryan Burke
New Philharmonic, Music Director and Conductor.....	Kirk Muspratt
New Philharmonic, Associate Conductor and Librarian.....	Benjamin Nadel
New Philharmonic General Manager.....	Paula Cebula
New Philharmonic Personnel Manager.....	Karen Dickelman

MAC Design and Technical Staff

Technical Production/Lighting/Sound Coordinator.....	Richard Arnold, Jr.
Technical Theater Assistant Coordinator.....	Sabrina Zeidler
Costume and Make-up Design Coordinator.....	Kimberly G. Morris
Assistant Costume Coordinator and Stitcher.....	Gretchen Woodley
Production Manager.....	Joe Hopper
Sound and Lighting Specialist.....	Ben Johnson
Lighting Production Specialist.....	Elias Morales
Audio Production Specialist.....	Fisher Parsons
Events Production Specialist/Tech. Director – BTE.....	Caitlyn Woods
Stage Hands.....	Bobby Bryan, Zak Zubka



DOUBLETREE
by Hilton™
LISLE NAPERVILLE



downtown style & sophistication with suburban convenience. . .

- Beautifully Appointed Guest Rooms & Suites
 - Elegant Meeting & Banquet Rooms
- 3003 Restaurant Award-Winning Service & Cuisine
 - 24-Hour Business Center
- Beautiful Indoor Pool, Whirlpool Spa & Fitness Center

Whether you join us for a spectacular weekend get-away, exquisite dining experience or a once-in-a-lifetime special occasion banquet, rest assured our staff and accommodations will exceed your expectations.

3003 Thirty 0 Three

DoubleTree by Hilton Lisle Naperville
3003 Corporate West Drive, Lisle, IL 60532
630.505.0900 | lisenaperville.doubletreebyhilton.com

BROOKDALE

*Whatever we can do to help,
we'll do it with care.*

At Brookdale, your loved one is a member of our family. You'll find our care is delivered with knowledge gained from serving families for generations. Join our community to discover how you or your family member will feel right at home.



BROOKDALE
— SENIOR LIVING SOLUTIONS —

brookdale.com

For more information, contact (630) 446-1506
or mmetzger1@brookdale.com.

Brookdale Glen Ellyn (formerly The Meadows)
Independent Living
Assisted Living
60 North Nicoll Ave | Glen Ellyn, IL 60137
(630) 446-1600

02001

