



MISS BENNET:

# CHRISTMAS

AT PEMBERLEY

By Lauren Gunderson and Margot Melcon  
Directed by Amelia Barrett



Dear Friends of BTE,

Welcome to Buffalo Theatre Ensemble's 37th Anniversary Season! We believe deeply in the common, immediate and ephemeral, shared experience of theatre, and are so happy you are joining us – some of you continuing your commitment to theatre and to BTE in the coming year, and some of you joining our 'family' for the

first time. We're excited to share with you these three productions, told from very different perspectives, which are engaging, at times humorous and though-provoking. We so appreciate you, our subscribers, who are our extended family – and we look forward to the coming season with much excitement and joy.

We will continue to place at the highest priority the safety of both our audiences and artists. Please check [AtTheMAC.org](http://AtTheMAC.org) and [BTEChicago.com](http://BTEChicago.com) for up-to-date safety information.

Sincerely,

### The Ensemble

Aly Greaves Amidei<sup>^</sup>, Robert Jordan Bailey<sup>+</sup>, Amelia Barrett<sup>+</sup> (Associate Artistic Director), Bryan Burke<sup>+</sup> (Business Manager), Robyn Coffin, Rebecca Cox, Lisa Dawn, Nick DuFloth, Jon Gantt, Loretta Hauser (in memoriam), Connie Canaday Howard<sup>+</sup> (Managing Artistic Director), Christopher Kriz<sup>^</sup>, Michael W. Moon, Kurt Naebig<sup>+</sup>, Laura Leonardo Ownby, Galen G. Ramsey<sup>+</sup>, William "Sandy" Smillie, Kelli Walker and Norm Woodel. For more information about BTE, visit [btechicago.com](http://btechicago.com).

**BTE Board of Directors:** Margaret Aldworth, Robert Jordan Bailey, Amelia Barrett, Connie Canaday Howard, Ted Donner (Vice President), Elyse Kennard, Brandee Martin-Horton (President), Laura Leonardo Ownby (Secretary), Brandee Martin-Horton (President), Anthony Tumea (Treasurer).

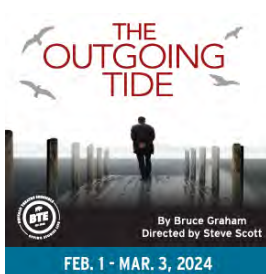
**Legal Counsel:** Derek Johnson

**Members Emeriti:** Robert Cappetta, Peggy Connolly, Rebecca Cox, Lisa Dawn, Ida Hagman, Diane Hicks, Richard Jarman, Michael J. McCoy, Joan Morrissey, Kurt Naebig, Carolyn Oesterle, John K. Rutledge, Sandra Sansone Brennan, Colleen Trinko, Kelli Walker, Kathy Wessel, Bonnie Wheaton, Richard Wilders, Norm Woodel, Mary Ann Zlotow

*+ Member of Actors' Equity Association, the Union of Professional Actors and Stage Managers*

*^ Member of United Scenic Artists, Local 829*

**BTE's 23-24 Season is dedicated to the memory of our dear friends Loretta Hauser and Michael J. McCoy, with deep appreciation.**



Buffalo Theatre Ensemble Presents

MISS BENNET:

# CHRISTMAS

AT PEMBERLEY

by **Lauren Guderson** and **Margot Melcon**

*Director*

**Amelia Barrett+\***

*Original Music & Sound Design*

**Christopher Kriz+^**

*Scenic Design*

**Jessica Kuehnau Wardell**

*Costume & Makeup Design*

**Aly Greaves Amidei+^**

*Lighting Design*

**Garrett Bell**

*Properties Design*

**Rachel Lambert**

*Managing Artistic Director*

**Connie Canaday Howard+\***

*Associate Artistic Director*

**Amelia Barrett+\***

+ Member of Buffalo Theatre Ensemble    ^ Member of United Scenic Artists, Local 829

\* Member of Actors' Equity Association, the Union of Professional Actors and Stage Managers

***There will be one 15-minute intermission***

***Please note: Adult themes and language.***

Presented by arrangement with **Dramatists Play Service, Inc.**

MISS BENNET: CHRISTMAS AT PEMBERLEY was originally produced by Northlight Theatre (BJ Jones, Artistic Director; Timothy J. Evans, Executive Director) in Chicago, Illinois, on November 10, 2016. It was directed by Jessica Thebus, the scenic design was by Richard and Jacqueline Penrod, the costume design was by Melissa Torchia, the lighting design was by Sarah Hughey, the original music and sound design were by Kevin O'Donnell, and the stage manager was Kimberly Ann McCann.

The use of any recording device, either audio or video, and the taking of photographs, either with or without a flash is strictly prohibited. Please turn off all electronic devices, such as cell phones and watches.



Nov. 16 – Dec. 17, 2023 | Playhouse Theatre

## CAST

MARY BENNET.....	Whitney Dottery
ARTHUR de BOURGH .....	Daniel Millhouse*
ELIZABETH DARCY .....	Paige Klopfenstein
FITZWILLIAM DARCY .....	Robert Hunter Bry
JANE BINGLEY.....	Charlotte Foster
CHARLES BINGLEY .....	Benedict L. Slabik II
LYDIA WICKHAM .....	Danielle Kerr
ANNE de BOURGH.....	Katherine Abel

\* Member of Actors' Equity Association, the Union of Professional Actors and Stage Managers

**Place:** A large drawing-room and attached library of Pemberley, the grand estate of Mr. and Mrs. Darcy. In the past quite formal, but Lizzy has warmed it up with a sense of home.

**Time:** December 1815



# Dining Partners

**Eat, drink & enjoy -  
MAC dining partners**

For all your pre-show meals and post-show bites, we are thrilled to be partnering with these neighborhood restaurants. Our dining partners offer MAC patrons exclusive discounts and special offers. All MAC ticket orders receive coupons to these local favorite restaurants!

**a toda madre**

**ADELLE'S**  
FINE AMERICAN FARE

**GLEN PRAIRIE**  
LOCAL FLAVOR  
FINE FOOD & DRINK

**Santa Fe**  
Mexican Restaurant

RESERVE  
**22**  
RESTAURANT BAR EVENTS

**NOBEL**  **HOUSE**

## PRODUCTION STAFF

Stage Manager .....	Sarah West*
Assistant Stage Manager .....	Riley Skalski
BTE Stage Management Scholar .....	Nick Washington◇
Dialect Coach .....	Amelia Barrett*+
Intimacy Director .....	Courtney Abbott
ASL Interpreter/Coordinator .....	Marijo Wimbush Fiacchino
ASL Interpreters .....	Sheila Kettering, Naydelin Munoz
Charge Artist .....	Shannon Evans, Jessica Kuehnau Wardell
Technical Director .....	Caitlyn Woods
Scene Shop Manager .....	Sabrina Zeidler
Scene Shop Crew.....	Gail Creighton, Sameer Datta, Keira Hernandez, Mack Lechtenberg, Vinny Scanio, Emily Sheehan, Harry Smith, Jillian Todd, Kaden Van Lerberghe
Costume Shop Manager .....	Kimberly G. Morris
Assistant Costume Shop Manager .....	Gretchen Woodley
Costume Shop Assistants .....	Courtney Lilly, Eleanor Evans, Francesca Butera, Lynn Borge, Meri Nushi
Wardrobe .....	Meri Nushi
Infection Control Safety Managers .....	Amelia Barrett*+, Connie Canaday Howard*+, Riley Skalski

### **Buffalo Theatre Ensemble Director and Acting Shadows**

This is an invited opportunity for select students who are working at the level of at least Acting II and/or Directing to shadow a theatre professional and gain meaningful insight into developing a character.

Acting and Directing Shadows .Ryan Castiglia, Jenna Cima, Elmeka Elme Spencer  
Fenner, Neela Lungo, Vel McNamara,  
Luna Shunk, Lilly Zúñiga

+ Member of Buffalo Theatre Ensemble

\* Member of Actors' Equity Association, the Union of Professional Actors and Stage Managers

^ Member of United Scenic Artists, Local 829

◇ BTE Stage Management Scholarship Recipient

Buffalo Theatre Ensemble's mission is to provide a forum in which artists, scholars, writers, students and community members explore new ideas and provocative issues through the production of quality theatre for the enjoyment of its audiences.

## DIRECTOR'S NOTE

A persistent question for readers at the end of *Pride and Prejudice* is exactly what happens to the Bennet family once the last lines are written. Jane Austen informs us a bit about Lydia and Wickham, about the happiness between Elizabeth and Darcy, and even Lady Catherine. But, Miss Mary Bennet? This is what Austen tells us:

*Mary was the only daughter who remained at home; and she was necessarily drawn from the pursuit of accomplishments by Mrs. Bennet's being quite unable to sit alone. Mary was obliged to mix more with the world, but she could still moralize over every morning visit; and as she was no longer mortified by comparisons between her sisters' beauty and her own, it was suspected by her father that she submitted to the change without much reluctance.*

It is here that our playwrights begin their imaginings. And it is here that our enjoyment of “a life well lived” begins. Each of the sisters has their own folly, related to that of the others’ and for that matter to ours, but each self-concern gives way to the rallying of the family and the care which each of us deserves each day, from one another. The joy of this play, for me, is the fact that truths about human nature are common to us all, the honesty of the heart trumps all, and good character is cultivated through literature, other people, and being honest to oneself.

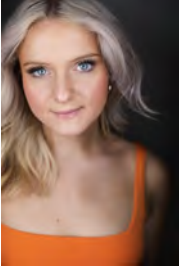
~AB

### Acknowledgements

Buffalo Theatre Ensemble is partially supported and funded by generous grants from The DuPage Foundation, Benevity, Choose DuPage, The Norm Woodel Inspiration Fund, The Illinois Arts Council, Illinois Department of Commerce and Economic Opportunity (B2B Arts Grant), and, and a gift from Dr. Thomas R. Scott and the late Shirley Klein Scott of Glen Ellyn through the College of DuPage Foundation and the generous support of the College of DuPage Trustees.



## CAST PROFILES



**Katherine Abel** (ANNE de BOURGH) is a graduate of Oklahoma City University's BFA Acting program and is so excited to be making her Buffalo Theatre Ensemble debut! Recent credits include *Bright Lights, Big City* (The Beautiful City Project), *Boeing Boeing* (Red Barn Summer Theatre), *Airness* (Citadel Theatre, Chicagoland premiere), *A Midsummer Night's Dream* (Big Noise Theatre), *Urinetown* (Surging Film and Theatrics, Jeff Nomination for Best Ensemble), and *Bright Star* (Red Barn Summer Theatre). Not her first time being a part of *Miss Bennet*, her most notable college performance was as sound board operator for this show; let's see if she can top it! Huge thanks to her parents and friends for all their love and support. For Ally, always. [www.katherineabel.com](http://www.katherineabel.com) Insta: @katherinejabel



**Robert Hunter Bry** (FITZWILLIAM DARCY) is an actor based in the Chicago area and is thrilled to be making his Buffalo Theatre Ensemble debut! Previous Chicago stage credits include *Hay Fever* and *The Virginian* (City Lit Theatre), *Lift Every Voice* (Collaboraction Theatre), *King Lear* (Redtwist Theatre), *The Firestorm* (First Folio Theatre), *Twelfth Night* (Midsommer Flight), and *Candida* (ShawChicago). Regionally he has performed on stage with Michigan Shakespeare Festival, Montana Shakespeare in the Parks, Illinois Shakespeare Festival and Arkansas Shakespeare Theatre. On screen, he can be seen in the upcoming web series *The Disorder of Tenebris* as well as short films *Painbroker* and *Zombie*. In addition to performing, he is also a teaching artist with Maywood Fine Arts Association's drama program. Bry is an alum of Illinois State University's undergraduate acting program and is represented by Shirley Hamilton Talent. Bry would like to thank his family and friends for their unwavering love and support as well as everyone who has worked to make this wonderful production possible! Instagram: @roberthunterandbry

## CAST PROFILES



**Whitney Dottery** (MARY BENNET) is ecstatic to be back on the Buffalo Theatre Ensemble stage! They were last seen here at The Playhouse as T.C. in *Naperville*.

Recent credits include: *Is God Is* (A Red Orchid Theatre, Jeff Nominated production), *Avenue Q* (Music Theater Works), and *Title X* (Artemisia Theatre). An alum of Columbia College Chicago, Dottery would love to thank all of their mentors and teachers over the years.

Immense gratitude also goes to their husband Colin and family for all of their support (especially the parents for all those years of piano lessons), Heather Peterson for her continued guidance and encouragement, friends, and their wonderful agents at NV Talent. For Grandpa. [www.whitneydottery.com](http://www.whitneydottery.com) Instagram: @\_whitofalltrades



**Charlotte Foster** (JANE BINGLEY) is an MFA graduate from the FSU/Asolo Conservatory and so happy to be working with Buffalo Theatre Ensemble for the first time. Recent credits include *Boeing Boeing* (Third Avenue Playworks), *Our Town*, *Much Ado About Nothing* (Asolo Repertory Theatre), *Dead for a Ducat*, *Star-Crossed* (Love Drunk Productions via the Toronto and Orlando Fringe Festival), and *A Midsummer Night's Dream* (North Dakota Shakespeare Festival).

She has also worked with Commonwealth Shakespeare Company, The Walnut Street Theatre, and Florence English Speaking Theatrical Artists. Big thanks and big love to friends and family. [www.charlottefoster.com](http://www.charlottefoster.com)



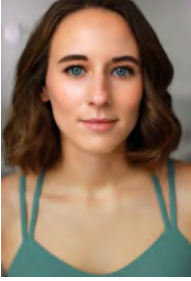
**Danielle Kerr** (LYDIA WICKHAM) is so excited to be making her Buffalo Theatre Ensemble debut! Recent credits include *Vanya and Sonia and Masha and Spike* (Dunes Summer Theatre), *The Threepenny Opera* (Theo Ubique), *Dooby Dooby Moo* (Lifeline Theatre), *National Merit* (Boho Theatre) and *A Grand Night for Singing* (Dunes Summer Theatre). Kerr is a recent graduate of Northwestern University, where she studied Theatre and English. A huge thank you to her

parents for instilling in her a great love of Jane Austen.

[Daniellemkerr.com](http://Daniellemkerr.com)



## CAST PROFILES



**Paige Klopfenstein** (ELIZABETH DARCY) is a recent Chicago transplant and is thrilled to be here and working with Buffalo Theatre Ensemble for the first time! Recent credits include *Collected Stories* (Oil Lamp Theater), *Our Town* (Asolo Repertory Theatre), *Julius Caesar* (FSU/Asolo Conservatory), *A Midsummer Night's Dream* (North Dakota Shakespeare Festival), *The Flick* (Dobama Theatre). She received her MFA in Acting from FSU/Asolo Conservatory. With all the love and thanks to the Home

Team, xo. For Molly. [www.bookmarkthispaige.com](http://www.bookmarkthispaige.com)



**Daniel Millhouse\*** (ARTHUR de BOURGH) is grateful and thrilled to be returning to Buffalo Theatre Ensemble for his fourth production! Previous productions with BTE include *The 39 Steps*, *Naperville* (Stage Manager), and *Season's Greetings* (Stage Manager). Chicago Theatre: Buffalo Theatre Ensemble, The Shakespeare Project of Chicago, ShawChicago, A Crew of Patches, Remy Bumpo, and The Second City

Training Center. Regional Theatre: Michigan Shakespeare Festival, Idaho Shakespeare Festival, Great Lakes Theatre, and Great River Shakespeare Festival. Film/TV: *Chicago Fire*. Motion Capture: *Call of Duty* Video Game Franchise. Podcasts: *The Vanishing Act* and *The Onion's: The Topical*. Education: MFA in Acting/Directing - University of Wisconsin-Madison; BS - Eastern Michigan University. Millhouse is an Assistant Professor at the College of DuPage, a proud member of AEA, and is represented by Big Mouth Talent. Check out more information on his website at [www.danielmillhouse.com](http://www.danielmillhouse.com).



**Benedict L. Slabik II** (CHARLES BINGLEY) is beyond excited to return to the stage with Buffalo Theater Ensemble. He was last seen with BTE in *Good People* (Stevie) as well as serving as a recurring understudy in various productions. Some of his most recent productions have been: *The 39 Steps* (Hannay) with Steel Beam Theater, Multiple roles with the Elgin Shakespeare Project, *Peter and the Starcatcher* (Black Stache) at Wheaton Drama, and many others.

## CAST PROFILES

Benedict has completed the entire improv program with Chicago's Io Theater (formerly ImprovOlympics), sits on the board of directors at Steel Beam Theatre in St. Charles, and is also a current member of the Village Theatre Guild as a representative of their play reading committee. Benedict would like to thank everyone in his life for their unrelenting support both on and off stage. He couldn't do this without you.

## UNDERSTUDY PROFILES



**Erik Hylko** (U.S. CHARLES BINGLEY) is thrilled to be with Buffalo Theatre Ensemble this holiday season! Since moving to Chicago last year, some credits include Jason in *Sweat* (Loop Players), the Messenger in *Antigone* (Playtime Theatre Co.), Officer Winfrey in *Perdido* (Bilal World Entertainment), and two Understudy roles with Glass Apple Theatre. He is so grateful for the love and support of his Chicago friends and family.



**Jenny Hoppes** (U.S. ANNE de BOURGH) is ecstatic to be working with Buffalo Theatre Ensemble on this amazing show! She was recently part of the Milwaukee Repertory Theater's EPR Acting Internship, where she played Ursula/The Sexton in *Much Ado About Nothing*, and understudied the role of Vanessa in *The Nativity Variations*. She graduated from Point Park University (BFA in Acting), and loves cats, physical fitness, and trash television. Film: Buick in *Shingles: The Movie*.

Notable theatrical credits: Citadel Theatre's *The Mousetrap* (U/S Mollie), Point Park University's *Everybody* (Death), *Stagestruck* (Ellen Terry). Thanks to family, and friends for their undying support! [Jennyhoppes.com](http://Jennyhoppes.com)



**Reid Harrison O'Connell** (U.S. ARTHUR de BOURGH) is thrilled to be a part of this production with Buffalo Theatre Ensemble. Chicago credits include *Cat on a Hot Tin Roof* (MadKap Productions), *Summer and Smoke* (Violet Sky Theatre), and *Butterflies Are Free* (Big Noise Theatre). O'Connell has also appeared in plays and musicals at Theatre at the Center and the Illinois Theatre Center. O'Connell sends lots of love to his family.

## UNDERSTUDY PROFILES



**Stephanie Turner O'Kelley** (U.S. ELIZABETH DARCY) is thrilled to return to Buffalo Theatre Ensemble after shadowing *Outside Mullingar* as a COD student. Recent credits include *Seasonal Bags* at STC Theatre, *The Merry Wives of Windsor* at Shakespeare at the Centre, *Cabaret*, *Violet*, and *The Pajama Game* at Elmhurst College, and *The Addams Family*, *Much Ado About Nothing*, and *Girls Like That* at College of DuPage. She is eternally grateful to her family, friends, and husband for their love and support. Enjoy the holidays and this wonderful show!



**Austin Slott** (U.S. FITZWILLIAM DARCY) is grateful to be a part of the Buffalo Theater Ensemble season. He previously shadowed for BTE's productions of *Time Stands Still* and *Outside Mullingar*. His credits include *Captain Blood*, *The Diary of Anne Frank* and *There May Be Ghosts*. He studied acting at the College of DuPage and is currently teaching English at the school.



**Izzie Jones** (U.S. MARY BENNET) is so excited to be returning to Buffalo Theatre Ensemble after shadowing in *The Cake* as a student at COD! Jones is represented by Gray Talent Group, and has an Associate in the Arts degree from College of DuPage. Additionally, she studied at the Chicago College of Performing Arts. Previous professional credits include *Marys Seacole* (Griffin Theatre), *Godspell* (Theo Ubique), and *New Faces Sing Broadway 1961* (Porchlight). Jones is passionate about creating art in spaces where all people are accepted and celebrated for their differences. She is so grateful to her family, friends, and agents for their endless support. Happy holidays!

## UNDERSTUDY PROFILES



**Bek Szilagyi** (U.S. JANE BINGLEY) is elated to be a part of this Buffalo Theatre Ensemble production. Szilagyi is a College of DuPage Alumni and graduated with her undergraduate at Olivet Nazarene University with an emphasis in Theatre. Some of Szilagyi's previous credits are *Imitation of Life* (Theater 47); *You're A Good Man, Charlie Brown* (Acting Out Theatre Company); and *All*

*My Sons* (Olivet Nazarene University). Szilagyi is also the 2016-2017 John Belushi/Second City Scholar. Szilagyi is grateful to her family and friends for their love and support.



**Leela Wolgemuth** (U. S. LYDIA WICKHAM) graduated this May with a degree in Acting from Illinois State University, and is very excited to make her Buffalo Theatre Ensemble debut! Her professional debut was with the Illinois Shakespeare Festival, where she acted in *Much Ado About Nothing*, *King Lear*, and Theatre for Young Audiences show *Much Ado About Quite a Lot*.

Most recently at school, Wolgemuth worked alongside actress Jane Lynch, who directed her as Bella Kurnitz in *Lost in Yonkers*. She is represented by Talent X Alexander. Wolgemuth would like to thank her mom and dad for their endless encouragement and support!

[leelawolgemuth.com](http://leelawolgemuth.com)

*Special thanks to*

Lewey Q's

Tap

Beer.Pizza.Wings.Sports

427 N Main Street, Glen Ellyn, IL 60137

**Lauren Gunderson** is one of the most produced playwrights in America since 2015 topping the list thrice including 2022/23. She is a two-time winner of the Steinberg/ATCA New Play Award for *I and You* and *The Book of Will*, the winner of the Lanford Wilson Award and the Otis Guernsey New Voices Award, a finalist for the Susan Smith Blackburn Prize and John Gassner Award for Playwriting, and a recipient of the Mellon Foundation's Residency with Marin Theatre Company. She studied Southern Literature and Drama at Emory University, and Dramatic Writing at NYU's Tisch School where she was a Reynolds Fellow in Social Entrepreneurship. Her play *The Catastrophist*, about her husband virologist Nathan Wolfe, premiered digitally in January 2021. She co-authored the *Miss Bennet* plays with Margot Melcon, and *The Half-Life of Marie Curie* premiered off-Broadway and at Audible.com. Her work is published at Playscripts (*I and You; Exit Pursued By A Bear; The Taming and Toil And Trouble*), Dramatists Play Service (*The Revolutionists; The Book of Will; Silent Sky; Bauer, Natural Shocks, The Wickhams and Miss Bennet*) and Samuel French (*Emilie*). Her picture book *Dr Wonderful: Blast Off to the Moon* is available from Two Lions/Amazon. She is the book writer for musicals with Ari Afsar (*Jeannette*), Dave Stewart and Joss Stone (*The Time Traveller's Wife*), Joriah Kwamé (*Sinister*), Kait Kerrigan and Bree Lowdermilk (*Justice and Earthrise*), and Kira Stone (*Built for This*). She is a board member of The Playwrights Foundation.

**Margot Melcon** is a theater artist, administrator and writer. She was the Director of New Play Development at Marin Theatre Company for seven years, where she dramaturged over 30 productions—including six world premieres—and administered the company's two annual new play prizes and commissioning program. She has developed plays with TheatreWorks, Bay Area Playwrights Festival, Crowded Fire Theater, Shotgun Players, Berkeley Rep's Ground Floor, the Kennedy Center, the New Harmony Project, and the Playwrights' Center in Minneapolis. She is currently the Program Executive for Promoting Culture at the Zellerbach Family Foundation. Melcon is a graduate of California State University, Chico.

## ARTISTIC DIRECTOR PROFILES

**Connie Canaday Howard\***+ (Managing Artistic Director) has directed numerous productions for BTE, with some favorites being *Time Stands Still*, *Rabbit Hole*, *Noises Off*, *Into the Woods* and *Dancing at Lughnasa*. She is also a member of BTE's acting ensemble, most recently playing Della in *The Cake*, and will be playing Peg in *The Outgoing Tide* this season. Canaday Howard holds a MFA in Directing, is a proud member of Actors' Equity Association, and has worked regionally with Three Rivers Shakespeare Festival, City Theatre Company, Belvoir Terrace, Drama Workshop, Down River Dinner Theatre, Ingersoll Theatre, Charlie's Showplace, and tours of both theatre and dance, as well as helping to create and perform several improvisational shows. She serves on the Artistic Team of the Joseph Jefferson Committee, and, while a professor, also adjudicated for the Kennedy Center American College Theatre Festival (KCACTF). Connie recently retired as Chair/Professor of the Theatre Department at the College of DuPage, where she directed countless productions, including some favorites of *The Addams Family*, *Joe White and the Seven Dwarves*, *Taming of the Shrew* and *The Living*. Canaday Howard received COD's Outstanding Faculty in 2004, and served as the Illinois IAI co-chair of the Theatre committee for sixteen years, until recently.

**Amelia Barrett\***+ (Director, Associate Artistic Director) has acted, directed and coached dialect for many Buffalo Theatre Ensemble productions. She is a proud member of the acting ensemble and calls the theater her artistic home. As an actor, she has appeared with other local, regional, and international companies. She is Chair of the College of Dupage Theater Department, where she has directed well over 60 productions. She is a proud member of Actors' Equity Association as well as the Screen Actors Guild and the American Federation of Radio and Television Artists. She holds a Master of Fine Arts degree in acting from the University of Texas at Austin and a Graduate Certificate in Laban Movement Analysis from Columbia College Chicago.

## DESIGNER PROFILES

**Aly Greaves Amidei+^** (Costume, Hair and Make-up Design) is a costume designer, playwright, and an Assistant Professor of Design at the University of Wisconsin-Madison. Recent BTE work includes *Andy Warhol's Tomato*, *Season's Greetings*, *The Cake*, and *Improbable Fiction*. Her costume and makeup designs have also been featured at Lifeline Theatre, Strawdog Theatre Company, Michigan Shakespeare Festival, Steep Theatre, Magic Theatre of San Antonio, Lakeside Shakespeare, Irish Theater of Chicago, DuPage Opera, Stage Left, Artistic Home, House Theater of Chicago, Teatro Vista, Collaboraction, and Vitalist Theater. Previously, she worked for fifteen years as the costume and makeup coordinator for the College of DuPage theater and dance department and as a professor at UNC-Charlotte for seven years.

**Garrett Bell** (Lighting Design) is a lighting designer based in Chicago. Recent Lighting Design credits with BTE include *Andy Warhol's Tomato*, *Season's Greetings*, *Clybourne Park*, *Naperville*, and *The Cake*. Other recent credits include *Tecumseh!* with the Scioto Society, *Heisenberg* (lighting and scenic) with Griffin Theatre, *Sweat* with The Loop Players, *Disconnect* at Wheaton College, and *Future Perfect* with Bellissima Opera. More can be found at [www.garrettbell.com](http://www.garrettbell.com).

**Christopher Kriz +^** (Original Music and Sound Design) is a composer and sound designer based in Chicago, and an Ensemble Member with BTE. Previous BTE designs include *Andy Warhol's Tomato*, *The 39 Steps* (Jeff nomination), *Season's Greetings*, *The Cake*, *Holmes and Watson*, and dozens of others. Chicago design credits include: Goodman Theatre, Steppenwolf, Chicago Shakespeare, Chicago Symphony Orchestra, Court Theatre, TimeLine Theatre, Remy Bumppo, Victory Gardens, Northlight Theatre, Shattered Globe, The Gift Theatre, and many others. Regional: Seattle Repertory Theatre, Kansas City Repertory Theatre, Indiana Repertory Theatre, Alabama Shakespeare Festival, Peninsula Players, American Stage Theatre, Crossroads Theatre, TheatreSquared, Montana Shakespeare, Nebraska Repertory Theatre, Michigan Shakespeare Festival, and others. A winner of five Joseph Jefferson Awards, Kriz is a proud member of United Scenic Artists 829. To hear more of his work, please visit [christopherkriz.com](http://christopherkriz.com)

## DESIGNER PROFILES

**Rachel Lambert** (Properties Design) is so happy to be working with Buffalo Theatre Ensemble again. She is a freelance costume and props designer in Chicago whose previous credits include work with Goodman Theatre, The Second City, Northlight Theatre, Remy Bumppo Theatre, First Folio, The Gift, Eclipse Theatre, Redtwist, DePaul School of Music, Greenhouse Theatre, BoHo Theatre, Underscore Theatre, Signal Ensemble, and American Blues Theatre. She has been nominated for five Jeff awards. Regionally she has designed for Peninsula Players and the Texas Shakespeare Festival.

**Jessica Kuehnau Wardell** (Scenic Design) is a scenic and costume designer, teacher, and artist based in Chicago. While it's her first time designing with BTE, her recent Chicago credits include Jeff nominated *Pulled Punches* (MPAACT), *What the Constitution Means to Me* (Timeline Theatre), *Noises Off* (Windy City Playhouse); *End Game* (Hypocrites Theatre) and *Lela & Company* (Steep Theatre). Regionally, Kuehnau Wardell has designed immersive theatrical cocktail experiences across the country with Fever Originals, and her scenic design for the new TYA production *Jabari Dreams of Freedom* (First Woman Theatre) concluded its regional tour at The New Victory Theatre on 42nd Street in New York. Kuehnau Wardell holds an MFA in stage design from Northwestern University and is an Adjunct Professor at The Theatre School at DePaul University and resident designer at Roosevelt University. Check out her online portfolio at [www.jesskdesign.com](http://www.jesskdesign.com).





## STAGE MANAGER PROFILES

**Sarah West\*** (Stage Manager) is pleased to return to BTE where she previously managed *Clybourne Park* and *Stove Toucher*. Recent credits include First Folio Theatre (*Jeeves Intervenes*, *Mary's Wedding*, *As You Like It*, *Silent Sky*, *A Midsummer Night's Dream*, *The Amish Project*, *The Madness of Edgar Allan Poe*, and others), Oak Park Festival Theatre (*Edgar Allan Poe: A Love Story* 2019 and 2021), United Solo at Stage 773 (*Tall Boy*), Mercury Theatre (*Mary Poppins*), Babes with Blades (*Women of 4G*), and Capital City Theatre (*25th Annual Putnam County Spelling Bee*). She is a proud graduate of North Central College. For K, D, L & T.

**Riley Skalski** (Assistant Stage Manager) is overjoyed to be a part of Buffalo Theater Ensemble's season! She previously shadowed for BTE's production of *Time Stands Still* and was a dresser for BTE's production of *Improbable Fiction*. Recent film credits include the short film *The Static Syndrome*. Recent theater credits include *Curse of the Starving Class*, *The Diary of Anne Frank*, *Pippin*, *Girls Like That*, and *A Christmas Carol* all performed at College of DuPage. She was a recipient of the John Belushi/Second City Stage Management Scholarship in 2018 and stage-managed College of DuPage's production of *The Foreigner*. After taking a couple of years off, Skalski is ecstatic to continue studying theater at College of DuPage as she is pursuing a career in theater and teaching.

**Nick Washington** ♦ (BTE Assistant Stage Management Scholar) Previous credits include *Dead Man's Cell Phone* (A Dead Man, Gordon); *Born Yesterday* (Sen. Norval Hedges), *The SpongeBob Musical* (Larry The Lobster, Gary Snail, Sponges, S Devotee, Pirates, Anemones), *The Dining Room* (Howard, Ted, Paul, Chris, Standish, Guest) at College of DuPage. Washington is a recipient of the 2023 BTE Stage Management Scholarship.

+ Member of Buffalo Theatre Ensemble

\* Member of Actors' Equity Association, the Union of Professional Actors and Stage Managers

^ Member of United Scenic Artists, Local 829

♦ BTE Stage Management Scholarship Recipient

The MAC offers all of this for you,  
but we can't do it without you!



**YOUR GIFT HELPS PROVIDE CULTURAL VITALITY  
THAT ENRICHES AND ENTERTAINS!**



**GIVE TODAY! TO SUPPORT THE MAC,**  
visit us at [foundation.cod.edu](http://foundation.cod.edu) or call (630) 942-3088



**College of DuPage  
FOUNDATION**

(630) 942-3088 | [foundation@codfound.org](mailto:foundation@codfound.org) | [foundation.cod.edu](http://foundation.cod.edu)



Buffalo Theatre Ensemble (“BTE”) is a 501(c)(3) not for profit, professional theatre company in residence at the McAninch Arts Center (“MAC”) on the campus of College of DuPage.

Ticket revenue only covers a portion of Buffalo Theatre Ensemble’s operating expenses. The rest must be raised through contributions, the majority of which comes in the form of gifts from individuals like you.

It’s because of our close circle of friends that BTE is able to return and explore new ideas and provocative issues through the production of professional, high quality theater for the enjoyment of its audiences.

The resident ensemble brings professional theater to DuPage County and at the same time enhances the training of students in Theater at College of DuPage, providing opportunities for students to develop their talents alongside working theater artists.

We invite you to become a part of this family of supporters by joining the **Friends of Buffalo Theatre Ensemble**. Make checks payable to Buffalo Theatre Ensemble [BTE, PO Box 2608, Glen Ellyn, IL 60138] or donate through PayPal <https://www.paypal.com/us/fundraiser/charity/2042520> or go to [btechicago.com](http://btechicago.com) and select donate.

With a financial commitment of \$500 or more, donors help bring our stories to life by “sponsoring” an Ensemble member for the season. Sponsorship includes:

- Recognition in show program for entire season
- Two additional complimentary tickets to the show of donor’s choice
- One-on-one visit with “your artist” (at a mutually agreed upon location such as the theatre, a coffee shop, or via Zoom)

Rising Star.....\$50 to \$249	Dream Maker.....\$1000-\$2999
Director’s Circle.....\$250-\$499	Benefactor.....\$3000+
Imaginer.....\$500-\$999	

*Buffalo Theatre Ensemble is a designated 501(c)(3) not-for-profit organization. Your donation may be tax deductible to the extent permitted by law. Please check with your tax advisor.*

**BTE's 23-24 Season is dedicated to the memory of our dear friends  
Loretta Hauser and Michael J. McCoy, with deep appreciation.**

**In Memory of  
Michael J. McCoy**

Connie Canaday Howard  
Alisa Jordheim  
Deborah Kolek  
Thomas Manak  
Jane Oldfield  
Colleen Trinko  
Scott Wetle  
Erin Wymore &  
Jeff and Julie Wymore

**In Memory of  
Loretta Hauser**

Eugene L. Benner  
Connie Canaday Howard  
Erin Diener-Matul  
Lou Ann Kaletka Gaya  
Lisa Hada  
Patricia Miller

Thomas and Robin  
Reeves  
Gertrude Rigg  
Virginia Schweinberg  
and Family  
Nancy and Kevin Taylor  
Lynn and Gray Wilkens

For 37 years, **Buffalo Theatre Ensemble (BTE)** has played a major role in the cultural community of College of DuPage and the surrounding area, through the marriage of committed permanent ensemble members, fine Chicagoland artists, and great theatrical works. We gratefully acknowledge the donors who have made it possible to return for our 37<sup>th</sup> season.

This list of donors reflects contributions made from **August 2018 through November 1, 2023**. While we carefully prepared this listing, we recognize that errors may occur. Please accept our apology if you are not properly represented on this list and contact BTE at [ab@btechicago.com](mailto:ab@btechicago.com) so we may correct our records.

**Benefactor (\$3000 and above)**

Robert Bailey  
Katherine Balek  
Connie Canaday Howard  
Cleve E. Carney Fund  
Peggy Connolly  
DuPage Foundation  
Jean Hawkinson  
Art Hirsch  
Illinois Arts Council  
Maggie and Mike McCoy  
Network for Good  
Carolyn and Eric Oesterle  
Karen Owen  
John K. and Betty Rutledge  
Thomas Scott  
Scott Vessely  
Donald Westlake  
Norman Woodel

**Dream Maker (\$1000–\$2999)**

Mary Bacci and Renato  
Bacci Jr.  
Amelia Barrett  
Deborah Borge  
Michael Boyna  
Sharon Brockmeier  
Kathleen Drennan  
Dr. James and Judy Dunlap  
Friends Through Facebook  
Phil and Amy Gelber  
Jon and Ruth Good  
Charles and Phyllis  
Goodman  
George and Mary Hall  
Richard Jarman  
Jessica Lippman  
Harold and Karyl McAninich  
Mrs. Joseph Morrissey  
Tom and Karen Pulver  
William Raymond  
Sandra Sansone Brennan  
Nathan Schuette

Maureen and Terrence  
Taylor  
Kelli Walker  
Kathy Wessel  
Bonnie M. Wheaton  
Robert Wunderlich  
Mary Ann and Walt Zlotow

**Imaginer (\$500–\$999)**

Brian Allendorfer  
Lynette Arendt  
Bob and Betty Becker  
Mary Sue Brown  
John E. and Suzanne R.  
Buntrock  
Robert and Nancy Casey  
John and Pamela Dalby  
James and Marie Drasal  
Donald and Catherine  
Fischer  
Russell and Judy Flores  
Kenneth and Debra Fulk  
Glen Ellyn Chamber of  
Commerce

## FRIENDS OF BUFFALO THEATRE ENSEMBLE

Ida Hagman  
 Rebekah and Rodney Harris  
 Bob and Sue Hartman  
 Nancy Headen  
 Cynthia Ann and Andrew Johnson  
 Charlene Kornoski-Duvall  
 Richard and Mary Kuhn  
 Larry Larson  
 Robert and Jean Lindsey  
 Kathleen McCullough  
 John and Rita Meier  
 David J. and Donna M. Millhouse  
 Jim and Lorraine Paulissen  
 Edward and Bernadine Pillar  
 Pamela Pipkin  
 William Podgorski  
 Merrill and Janet Rajcek  
 Randy Johnson and Lisa Savegnago  
 Shanker Valleau Wealth Advisors  
 Kristin and Peter Shulman  
 James and Linda Smedinghoff  
 Gloria P. & Kennan R. Sullivan  
 Haruo Kurokawa and Hal Temple  
 Marcy and David Uphoff  
 Erin & Jeff and Julie Wymore

### Director's Circle (\$250–\$499)

Margaret Aldworth  
 Joy & Bob Barrell  
 Marcia & Arthur Burke  
 Robert Cappetta  
 Dr. and Mrs. Brian W. Caputo  
 Chipotle Community Roots  
 Michael Church  
 Patrice Conaway  
 Robin Dye  
 Fran Kravitz and Daniel Edelman  
 Gary Harper  
 John & Emily Herndon  
 Jan T. and Kathryn Johansson

John J. Bryant Fund  
 Dennis Johnson  
 Lou Ann Kaletka Gayan  
 Barbara Kamm  
 Linda Kulikowski  
 John L. Ladle  
 Paul & Eileen Lefort  
 John Mategrano  
 Michael McKeon  
 Carol & Michael Moon  
 John M. Mulherin  
 Michael J. and Melissa F. Nachman  
 Jean R. and Joanne Oliphant  
 Gwen O'Loughlin  
 Sarah & Roger Poeppel  
 Tina Rudins  
 Barb & Doug Rundell  
 Alfred & Lorraine Schuller  
 Patricia & Richard Schwarze  
 Steve Scott  
 Patricia Spence  
 Arnold R. & Susan M. Stenvog  
 Nancy Svoboda  
 Linda & Barry Tusin  
 Larry Ward  
 Rich & Kathy Wilders  
 Jo Anne Zipperer

### Rising Star (\$50 to \$249)

Anne Ahlert  
 Barbara and Lowell Anderson  
 Ron & Judith Anderson  
 Christine Aument  
 Susan Bell  
 Eugene Benner  
 Blackbaud Giving Fund  
 Peter Bostock  
 James Boves  
 Julie Breen  
 Martha & Ray Bright  
 Joanne Brown  
 Patrick and Joanne Callahan  
 Bonnie Campbell  
 Abbey Canaday Howard  
 Maura Canzano  
 Larry & Karen Christensen  
 Ray & Melissa Cliff

Shiela Cosco  
 Lisa Dawn Curran  
 Barb Danvir Hepfer  
 Erin Diener Matull  
 Julia Dilberti  
 Gary Dobson  
 Glenn Domovic  
 Victoria Donnelly  
 Ted Donner  
 LuEllen Doty  
 Andrea Duffy  
 Robert Dulski  
 Marla Eglowstein  
 Gary Ernst  
 Sally & William Fairbank  
 Angela and James Frank  
 Ruta Freimanis  
 Barbara Fried  
 Jackie Friedman  
 Bonnie L. and Jeffrey L. Gahrts  
 Karen Gaydos  
 Robin George  
 Chris Gerrib  
 Fran Gilles  
 Peter Glassman  
 Dawn Goldhirsh  
 John & Lisa Gorak  
 Kathleen Graffam  
 Lisa Hada  
 James and Gail Hannon  
 Cassy Harlo Schutz  
 Paul & Floy Haschke  
 Edward M & Cindy L Hegarty  
 James & Ann Helt  
 Diane Hicks  
 Ron & Valerie Hollaender  
 John C & Stephanie B Iglehart  
 Carla Inwood  
 Dennis Johnson  
 Mary Johnson  
 Bernard Jokiel  
 Charles & Margaret Jonah  
 Alisa Jordheim  
 Jean Joslyn  
 Jill Kainu  
 David Kee

## FRIENDS OF BUFFALO THEATRE ENSEMBLE

Kay & Rick Kehoe  
 Thomas Kelly  
 Deborah Kolek  
 Fran Kravitz  
 Mary Kraska  
 Sally & Martin Kuttesch  
 Eileen Landau  
 Cynthia Laughlin  
 Ida Lee  
 Virginia Lennon  
 Esther Loth  
 Holly Malloy  
 Tom Manak  
 Corrine Marrinan Tripp  
 Walter Martineau  
 Brandee Martin-Horton  
 Rich Matheson  
 David and Carolyn May  
 Jacqueline McGrath  
 Steven Merkel  
 Tom Mikrut  
 Patricia Miller  
 James Milobowski  
 Thomas Montgomery Fate  
 Jane Moore  
 Patricia Motto  
 Frank Mraz  
 Donald & Mary Ellen  
 Newsom  
 Oberweiss  
 Kevin O'Brien  
 Kelly O'Hanlon  
 Jane Oldfield  
 Kenneth Orenic  
 Jeff Ownby  
 Dianne Paulini  
 Dean & Lisa Payton  
 Michael Pesola  
 Mark Pfefferman  
 Judy Pitts  
 Terra Stetz & Rita Potter

Cynthia & Thomas Power  
 Joe Pundzak  
 Pat Read  
 Mary Ellen Reedy  
 Thomas and Robin Reeves  
 Carol & Alfred Reiman  
 Gertrude Rigg  
 Gail Robinson  
 Bruce Rodman  
 Judith Ronaldson  
 Daniel F. and Barbara Roos  
 Marlene & Robert  
 Rosecrans  
 Susan Ross  
 Gus & Georgia Rousonelos  
 Jim Ruffing  
 Mark Sand  
 Kathy Schleicher  
 Kathleen Schneider  
 Mary Kay Schultz  
 Virginia Schweinberg and  
 Family  
 Paul Seidlitz  
 Wei Shissler  
 Donna Jean Simon  
 Iona Simon  
 Michael Sitrek  
 M.D. & Laura Skeet  
 Jean Spitzer  
 Susan Spooner  
 Stephen Squier  
 Donald Stading  
 Louis & Marilyn Steenwyk  
 James Stover  
 Barbara & Thomas Suhrbur  
 Helen Szymanski  
 Kathleen Talenco  
 Dr. and Mrs. Anthony Taylor  
 Nancy and Kevin Taylor  
 Jean Tello  
 George Tenne

Mary Trecek  
 Paul & Colleen Trinko  
 Joseph & Mary Beth Turek  
 Barbara Urick  
 Alan L. & Linda K. Varney  
 James & Carolyn Vondran  
 Roy & Janice Wahnert  
 Vince & Gloria Walsh-Rock  
 James Weichel  
 Werner Weiss  
 Scott Wetle  
 Bobbi & John Wheatley  
 Mary Wiesen  
 Tod D. Willman  
 William Womack

### Business Partners

Adelle's  
 Cabernet and Co  
 Club Pilates Glen Ellyn  
 Emergence See  
 Photography  
 The Foxtail  
 Fuschia Glen Ellen  
 The MAC  
 Gia Mia  
 The Gift Theatre  
 Gindo's Spice of Life  
 Health Track  
 Hot Worx Wheaton  
 Lewey Q's Tap  
 Maise and Mash  
 Mindful Movements Pilates  
 & Yoga  
 Oil Lamp Theatre  
 Paramount Theatre  
 Peet's Coffee Downers  
 Grove  
 Yoga Six Downers Grove  
 Remy Bumpo Theatre  
 Silver Fox Travel  
 Skeleton Key  
 Two Hound Red



## **BTE BOARD OF DIRECTORS**

Brandee Martin-Horton (President), Ted Donner (Vice President), Laura Leonardo Ownby (Secretary), Anthony Tumea (Treasurer), Margaret Aldworth, Robert Jordan Bailey, Amelia Barrett, Connie Canaday Howard, Elyse Kennard  
**Legal Counsel:** Derek Johnson

**Members Emeriti:** Robert Cappetta, Peggy Connolly, Rebecca Cox, Lisa Dawn, Ida Hagman, Diane Hicks, Richard Jarman, Michael J. McCoy, Joan Morrissey, Kurt Naebig, Carolyn Oesterle, John K. Rutledge, Sandra Sansone Brennan, Colleen Trinko, Kelli Walker, Kathy Wessel, Bonnie Wheaton, Richard Wilders, Norm Woodel, Mary Ann Zlotow

## **STUDENT VOLUNTEERS**

Michael Bellino	Anita Constabile	Dimitris Michelis	Brandon Torres
Brandon Michael Bunn	Nathan Cozzi	Kailey Nelson	Marissa Warner
Caroline Broderick	Elmeka Elme	Ryan Sinclair	Brendan Matthew Weaver
Benjamin Cardinal	Brendan Flaherty	Gina Robertelli	Owen Woodard
Ashley Chavez	Trevor Frueh	Emily Sheehan	
Cassie Collins	Ryan Gentile	Rachel Strolle	
Jack Columbo	Julie Good	Tess Sundstrom	
	Kyle Krisch	Aaron Taylor	

## **VOLUNTEERS**

Peggy Aldworth	Christopher	Brett Mathieson	Lynda Pratscher
Quinn Bayola	Corrigan	Maggie McCoy	Erin Lynn Ransford
Debbie Borge	Julia DiLiberti	Caroline	Erica Sandvig
Bill Bulger	Andrea Ficarelli	McGowan	Debbye Simpson
Benjamin	The Late Joan	Isola Metz	Nancy Svoboda
Caracello	Frank	Barb Murphy	Donald Westlake
Gayatri Choudhary	Ken Frank	Elaine Patrick	Mary Ann Zlotow
Peggy Connolly	Rex Howard	Tony Payne	
	Paul LeFort	Pam Pipkin	



[btechicago.com](http://btechicago.com)



[facebook.com/BuffaloTheatreEnsemble](https://facebook.com/BuffaloTheatreEnsemble)



[BTEattheMAC](https://twitter.com/BTEattheMAC)

## HOUSE NOTES

- Cameras and recording devices are not allowed in the theater and are prohibited by our contracts with the artists.
- Smoking is not permitted in the theater or on campus.
- For your comfort and security, all backpacks and large bags must be checked.
- Please turn off all cell phones and any other alarms while in the theater.
- Emergency phone number at College of DuPage Police Department for after-hour calls is (630) 942-2000.
- Latecomers seated at discretion of the House Manager.
- Groups of 10 or more may contact (630) 942-3026 or [grouptix@cod.edu](mailto:grouptix@cod.edu) to arrange for group discounts.
- If you notice a spill in the theater, please notify an usher.
- McAninch Arts Center volunteers are people who assist the house staff in areas of ticket taking, ushering and general management during performances. To get involved, call (630) 942-3705.
- **For Americans with Disabilities Act** accommodations, call (630) 942-2141 (voice) or (630) 858-9692 (TDD).
- **Infrared Assistive Listening Devices:** For audience members who desire audio amplification of performances, headsets with individual volume controls are now available. You may check out the headsets at the Box Office with a driver's license. *Underwritten by a generous gift from The Knowles Foundation.*

## MAC STAFF LISTING

### MAC Administrative Staff

Director of the McAninch Arts Center.....	Diana Martinez
Business Manager.....	Ellen McGowan
Project Manager.....	Kari Schoettle
Business Office Assistant.....	Brianna Garcia
Curator, Cleve Carney Museum of Art.....	Justin Witte
Assistant Curator.....	Julia Walker
Gallery Assistant.....	Maria VanDyken Li
Marketing and Patrons Services Coordinator.....	Janey Sarther
Graphic Designer.....	Wendy Melgar
Director of Development for Cultural Arts.....	Janie Oldfield
Administrative Assistant.....	Mandy Rakow
Student Clerical Assistant.....	Blake Lietz

### MAC Box Office and Front of House Staff

Box Office Manager.....	Julie Elges
Assistant Box Office Supervisors.....	Jim Gosling, Elise Wash
Box Office Assistants.....	Patrick Garon, Tatia Hegrans
Patron Services Manager.....	Tom Murray
Assistant Patron Services Supervisor.....	Deborah Kolek
House Manager/Volunteer Coordinator.....	Rob Nardini

### MAC Resident Professional Ensembles

Buffalo Theatre Ensemble, Artistic Director.....	Connie Canaday Howard
Buffalo Theatre Ensemble, Associate Artistic Director.....	Amelia Barrett
Buffalo Theatre Ensemble, Business Manager.....	Bryan Burke
New Philharmonic, Music Director and Conductor.....	Kirk Muspratt
New Philharmonic, Associate Conductor and Librarian.....	Benjamin Nadel
New Philharmonic General Manager.....	Paula Cebula
New Philharmonic Personnel Manager.....	Karen Dickelman

### MAC Design and Technical Staff

Technical Production/Lighting/Sound Coordinator.....	Richard Arnold, Jr.
Technical Theater Assistant Coordinator.....	Sabrina Zeidler
Costume and Make-up Design Coordinator.....	Kimberly G. Morris
Assistant Costume Coordinator and Stitcher.....	Gretchen Woodley
Production Manager.....	Joe Hopper
Sound and Lighting Specialist.....	Ben Johnson
Lighting Production Specialist.....	Elias Morales
Audio Production Specialist.....	Fisher Parsons
Events Production Specialist/Tech. Director – BTE.....	Caitlyn Woods
Stage Hands.....	Bobby Bryan, Zak Zubka