



COLLEGE MUSIC



Welcome!

On behalf of the entire staff, I welcome you to the McAninch Arts Center. We are so happy you are here and welcome you to our MAC family and hope you feel at home. We want this to be your home to unplug and connect to an evening filled with laughter, music, dance, or theatre. We strive to inspire you through unique and inspiring theater experiences. We hope to transcend your expectations with excellent service and special pre and post-show engagement opportunities that help you connect to the artists and art forms more deeply. While you are here, don't forget to take some time to visit the Cleve Carney Museum of Art in the Lobby to experience cutting-edge contemporary art or enjoy our full-service concession area.

When you leave, please stay connected to us by joining us on Facebook (AtTheMAC) or by joining our e-newsletter to find out about added shows, events, and special offers (www.AtTheMAC.org). This year we challenge you to try something new at the MAC and expand your cultural palate. We invite you to join us for our free Global Flicks Film Series in February, to attend one of our student productions, or to join us this summer for the *Andy Warhol Portfolios: A Life in Pop* Exhibition.

We are thrilled that you have joined us, and if you should need anything during your visit, please don't hesitate to ask any of the staff, and we will do our best to accommodate you. We know you have many choices, and we are grateful you chose us. We sincerely hope you have a wonderful time and look forward to entertaining you.

Enjoy the show!

Diana Martinez
Director, McAninch Arts Center



Music at the MAC

Welcome to a place where music is performed, studied, explored and shared!

In the McAninch Arts Center at College of DuPage, students and community musicians explore the musical arts, hone their skills, and entertain audiences. You can walk through our hallways and hear the sounds of instrumental and vocal ensembles, private lessons in all instruments and voice, music classes, and performances like the one you are enjoying today.

We hope you enjoy the broad range of music we make with collaborations of eager musicians and experienced faculty in classical, jazz and unclassifiable styles. All of our ensembles welcome new members at the start of every semester and perform regularly.

Music has thrived at COD for over four decades. While faculty, students, and audiences change, we are part of a legacy of music as an essential form of human expression from the very beginning of human life. The primacy of musical expression continues to this day, despite all obstacles.

We hope you enjoy tonight's concert. Drop in on our free Music Fridays @ Noon in MAC 140. Join us on Facebook (AtTheMAC) or join our e-newsletter for news about all the events at the MAC (www.AtTheMAC.org).

Thank you for joining us for these concerts. Enjoy the music!

The Music Faculty at College of DuPage

McAninch Arts Center
at College of DuPage
presents

DuPage Chorale

Patrick O'Shea, Director
William Buhr, Accompanist

with

Desirée Hassler, soprano
Ann Kolker, mezzo-soprano
John Concepción, tenor
Michael Cavalieri, baritone

Susan DeMarco, organ

and the

DuPage Chorale Orchestra

Sunday, Dec. 3, 2023
Belushi Performance Hall, 7:30 p.m.

PROGRAM

In Time of War, A Prayer for Peace

Domine ad adjuvandum me festina Padre Giovanni Battista Martini
(1706-1784)

The Lord Is My Shepherd John Rutter
(b. 1945)

Verleih uns Frieden Felix Mendelssohn
(1809-1847)

INTERMISSION

Missa in tempore belli Franz Joseph Haydn
(1732-1809)

Kyrie

1. Kyrie eleison

Gloria

2. Gloria in excelsis Deo
3. Qui tollis peccata mundi
4. Quoniam tu solus sanctus

Credo

5. Credo in unum Deum
6. Et incarnatus est
7. Et resurrexit
8. Et vitam venturi saeculi

Sanctus

9. Sanctus

Benedictus

10. Benedictus

Agnus Dei

11. Agnus Dei

Domine ad adjuvandum me festina (Psalm 69:2, sung in Latin)

O Lord, make haste to help me.

Glory to the Father and to the Son, and to the Holy Spirit:

As it was in the beginning, is now and ever shall be,

World without end, Amen. Alleluia.

The Lord Is My Shepherd (Psalm 23, sung in English)

The Lord is my shepherd; therefore can I lack nothing.

He shall feed me in a green pasture,

and lead me forth beside the waters of comfort.

He shall convert my soul and bring me forth

in the paths of righteousness, for his Name's sake.

Yea, though I walk through the valley of the shadow of death,

I will fear no evil. For thou art with me:

Thy rod and thy staff comfort me.

Thou shalt prepare a table for me against them that trouble me:

Thou hast anointed my head with oil and my cup shall be full.

But thy loving kindness and mercy

shall follow me all the days of my life:

And I will dwell in the house of the Lord forever.

Verleih uns Frieden (Martin Luther, sung in German)

Graciously grant us peace, Lord God, in our time;

There is no one else who could fight for us

Except you, our God, alone.

Missa in tempore belli (Mass Ordinary, sung in Greek and Latin)

Kyrie:

Lord have mercy. Christ have mercy. Lord have mercy.

Gloria:

Glory to God in the highest, and on earth, peace to people of good will.
We praise you, we bless you, we adore you, we glorify you,
We give you thanks for your great glory, Lord God, heavenly King,
O God, almighty Father. Lord Jesus Christ, Only Begotten Son, Lord God,
Lamb of God, Son of the Father.

You take away the sins of the world, have mercy on us.
You take away the sins of the world, receive our prayer;
You are seated at the right hand of the Father, have mercy on us.

For you alone are the Holy One, you alone are the Lord,
You alone are the Most High, Jesus Christ,
With the Holy Spirit, in the Glory of God the Father. Amen.

Credo:

I believe in one God, the Father almighty, maker of heaven and earth,
of all things visible and invisible. I believe in one Lord, Jesus Christ,
the only Begotten Son of God, born of the Father before all ages.
God from God, Light from Light, true God from true God, begotten, not
made, consubstantial with the Father; through him all things were
made. For us men and for our salvation he came down from heaven.

And by the Holy Spirit was incarnate of the Virgin Mary, and became
man. For our sake he was crucified under Pontius Pilate, he suffered
death and was buried.

And rose again on the third day in accordance with the Scriptures. He
ascended into heaven and is seated at the right hand of the Father. He
will come again in glory to judge the living and the dead and his

TEXT AND TRANSLATIONS

kingdom will have no end. I believe in the Holy Spirit, the Lord, the giver of life, who proceeds from the Father and the Son, who with the Father and the Son is adored and glorified, who has spoken through the prophets. I believe in one, holy, catholic, and apostolic Church. I confess one baptism for the forgiveness of sins and I look forward to the resurrection of the dead.

And the life of the world to come. Amen.

Sanctus:

Holy, Holy, Holy Lord God of hosts.
Heaven and earth are full of your glory.
Hosanna in the highest.

Benedictus:

Blessed is he who comes in the name of the Lord.
Hosanna in the highest.

Agnus Dei:

Lamb of God, you take away the sins of the world, have mercy on us.

Lamb of God, you take away the sins of the world, have mercy on us.

Lamb of God, you take away the sins of the world, grant us peace.

The MAC offers all of this for you,
but we can't do it without you!



**YOUR GIFT HELPS PROVIDE CULTURAL VITALITY
THAT ENRICHES AND ENTERTAINS!**



GIVE TODAY! TO SUPPORT THE MAC,
visit us at foundation.cod.edu or call (630) 942-3088



**College of DuPage
FOUNDATION**

(630) 942-3088 | foundation@codfound.org | foundation.cod.edu

PERSONNEL

Vocal Soloists

Desirée Hassler, soprano
Ann Kolker, mezzo-soprano
John Concepción, tenor
Michael Cavalieri, baritone

Organist

Susan DeMarco

DUPAGE CHORALE

Patrick O'Shea, *Director*

William Buhr, *Accompanist*

Soprano

Rebecca Allison
Mary Ann Chandler
Mary Beth Dunne
Joan Figley
Joanna Goral
Holly Herber
Mary Hobein
Mary Holmes
Kathryn Huxhold
Natalie Janssen
Susanna Juarez Suarez
Siliva Larrondo
Joanne Nickels-
Peterson
Amy Peter
Erin Posavec
Simonne Robinson
Mimi Rose
Kiyala Smith
Stacy Stojanovic
Mary Carol Suchsland
Alyse Thompson-
Richards
Sarah van Stavaren
Linda Wagner
Hadley Weaver Rivera

Alto

Carol Bolt
Mary Burkhardt
Cara Cap
Cecilia Chen
Nancy Culp
Christine Dame
Kathleen Edwards
Elaine Frederickson
Lucy Gaven
Nicole Gonzalez Benitez
Susan Hagensee
Louise Handel
Linda Haselmajier
Mary Jo Holekamp
Mary Janes
Paula Karczewski
Ann Kolker
Madeline Kwiatkowski
Mary Loch
Patricia Luedtke
Nancy Malesky
Judy Morgan
Cheryl Murphy
Amethyst Nieves
Arlayne Pekofske
Joanne Perone
Erin Ralston
Kristin Schroepfer
Maureen Sheehan

Sharon Suchsland

Cynthia Swanson
Gail Tait
Judith Wojciechowski
Barbara Staman Wolff
Mary Zaborniak

Tenor

Mark Ailes
Carol Arnquist
Raif Galloway
Mark Peterson
Howie Pribble
Aiden Torres
Bill Treasurer

Bass

Christopher Culp
Stuart Garner
Urs Geiser
Michael Jurek
Chuck Lipkin
Robert Martin
Tom Morrissy
James Rostenberg
Donald Spink
Tyler Walker

DUPAGE CHORALE ORCHESTRA PERSONNEL

Violin 1

Rika Seko, concertmaster
Emily Nash
Carmen Abelson

Violin 2

Andrea Tolzmann
Wendy Evans
Ray Ostwald

Viola

Loretta Gillespie
Becky Coffman

Cello

Steven Houser

Bass

Tim Shaffer

Harp

Julie Spring

Oboe

Jenette Ingle
Sam Waring

Clarinet

Dan Won
Wagner Campos

Bassoon

John Gaudette
Steve Ingle

Trumpet

Dave Inmon
John Burson

Timpani

Paul Ross



MAKE MUSIC WHERE MUSIC THRIVES

College of DuPage brings 50 years of training and supporting musicians like you in whatever it is you want to do. With a staff of 25 private music instructors, nine ensembles, and four degree and certificate programs, COD is the first choice of serious musicians from the western suburbs and beyond.

For more information

Contact Thomas Stark at (630) 942-2391 or starkt1620@cod.edu.

For ADA accommodations, please email access@cod.edu with the event title in the subject line and your accommodation request. Please email two weeks in advance.

 **College of DuPage**

Want to Help Support COD Music Students?



The College of DuPage Foundation has started a new initiative fund for music students who can't afford private lessons. Stop by the Box Office for more information or call the COD Foundation at (630) 942-2462 to make a donation.

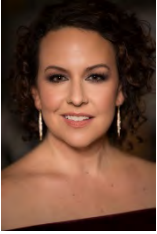
No donation is too small.

Thank you for your consideration.

College of DuPage
FOUNDATION

For more information or to make a donation, please call the COD Foundation at (630) 942-2462.

GUEST ARTIST PROFILES



In addition to singing in the full-time chorus at Lyric Opera of Chicago, soprano **Desirée Hassler** has sung and covered roles at Lyric in *Cendrillon*, *West Side Story*, *Tannhäuser*, *Oklahoma!*, *Manon*, *Macbeth*, *Boris Godunov*, *Show Boat*, *Elektra*, *Dead Man Walking* and *Der Rosenkavalier*. Recent performances include soprano soloist in the Mozart *Requiem* Eastern Illinois Symphony,

Bach's *B Minor mass* with Chicago Bach Project (John Nelson, conductor), Violetta in Verdi's *La traviata* with the Lake Geneva Symphony Orchestra, Ellen in *Oklahoma!* at Lyric Opera of Chicago, Kondja in *The Rose of Stambul* with Chicago Folks Operetta, soprano soloist in the Brahms *Requiem* (Los Angeles, CA), Barber's *Knoxville, Summer of 1915* with the Prairie Ensemble, Vaughan Williams' *Sea Symphony*, as well as Haydn's *Lord Nelson Mass* with the Wichita Symphony.

A California native, Hassler has successfully competed from the regional to International levels at the Bel Canto Competition, Metropolitan Opera National Council Auditions, International Franz Liszt Competition and is the recipient of many distinguished awards. The soprano is musically curious and stylistically flexible and enjoys performing music from the Renaissance to the 21st century-- in recital, concert, opera and performance art mediums. Highly sought after as master clinician, Hassler enjoys sharing her expertise with voice and opera studios at universities across the country. Her voice can be heard on everything from commercial and film soundtracks, to oratorio, opera and operetta, and even progressive heavy metal albums.

Hassler graduated in 2011 with a doctorate in Vocal Performance and Literature from the University of Illinois at Urbana-Champaign, where she completed a master's degree in 2003. Dr. Hassler has served on the faculties of Eastern Illinois University (Charleston, IL) as a Bynam fellow at Gordon College (Wenham, Mass), the University of Illinois at Urbana-Champaign and currently serves on the voice faculty of the Moody Bible Institute in Chicago, IL where she teaches voice and music history courses.

GUEST ARTIST PROFILES



Mezzo-Soprano **Ann Kolker** earned an MA in Communication Sciences and Disorders (CSD) with specialization in Speech-language pathology from Northern Illinois University. She is a speech-language pathologist & owner of Good Vibrations Voice Therapy, PLLC where she works primarily with voice, airway, and swallowing disorders. She is especially passionate about helping singers and speakers with vocal injuries or disorders regain their voices. During her undergraduate studies at Saint Xavier University, Kolker performed as a member of the University Chorale, singing the soprano solos in Schubert's *Mass in G*, and the mezzo-soprano solo in *Fern Hill* by John Corigliano. Kolker is currently a member of the Saint Irene Catholic Church Adult Choir in Warrenville, performing sacred choral and solo repertoire for weekly masses, recitals, and special events. Kolker is a voice student of Dr. Jan Bickel.



Lyric Tenor **John Concepción**, past recipient of The American Prize in Vocal Performance in Opera and a finalist in the Bel Canto Regional Voice Competition, is in constant demand as a performer, teacher and musical artist. He maintains a busy performance schedule on both the concert and operatic stages. Most notably, he has appeared with Lyric Opera of Chicago, Grant Park Symphony, Santa Fe Opera, Minnesota Orchestra, Milwaukee Symphony, Hawaii Symphony, Tulsa Opera, Cleveland Opera, Hawaii Opera Theatre, Portland Opera, Des Moines Metro Opera, and the Pine Mountain Music Festival.

Notable local appearances include Haydn's *A Mass in Time of War* with Naperville Festival Orchestra & Chorus, Kurt Weill's *Seven Deadly Sins* with Grant Park Symphony (Carlos Kalmar conducting), *An Afternoon of Opera and Musical Theatre* with Skokie Valley Symphony (Francesco Milliotto conducting), the world premier of Gustavo Leone's opera, *The Leader*, with Latino Music Festival in Chicago, and solo appearances with West Suburban Symphony (Verdi's *Requiem*, *A Night of Lerner & Loewe* and *A Night of Rodgers & Hammerstein*). As a recitalist, Concepción has performed for the Musicians Club of Women, Midwest Arts League, Lyric Opera Guild and the German Language Society of Chicago.

GUEST ARTIST PROFILES

He is a member of the quartet, Opera Lirica, which has performed programs of opera and musical theatre around the Chicago area for many years.

A frequent performer at the Acorn Theatre in Three Oaks, MI, Concepción regularly performs on the popular *Christmas at the Acorn* concert every holiday season. At the Acorn, he has directed and produced performances of *Les Miserables* and *The Phantom of the Opera*, an Evening of Classic Musical Theatre and has been a featured singer in many operatic programs, including *I Pagliacci* and *The Magic Flute*.

For more than thirty years, Concepción has been a full-time chorus member at Lyric Opera of Chicago as well as the Grant Park Festival Chorus each summer. Additionally, he is the Vice Chair of the Advisory Board for The Center for Performing Arts at Governors State University in University Park, IL, where he initiated a popular series of operatic programs called Opera Up Close, now in its fourteenth season. Concepción also serves on the board for the Collaborative Arts Institute of Chicago (CAIC), an organization devoted to presenting collaborative vocal chamber music and art song recitals.



Baritone **Michael Cavalieri** sings a wide range of styles and repertoire, spanning from opera to concert to ensemble. Locally, he has appeared in leading roles with Musical Theater Works as Eisentstein (*Die Fledermaus*), Captain Corcoran (*HMS Pinafore*) and Carl Magnus (*A Little Night Music*), and as a soloist with the Chicago Civic Orchestra, Chicago Chorale, West Suburban Symphony Orchestra, and the Lake Geneva

Symphony Orchestra. Mr. Cavalieri premiered the role of "The Announcer" in Gustavo Leone's *The Leader* at the Goodman Theater. Michael contributed over a dozen songs to the complete songbook of Charles Ives for Naxos Records and has received 2nd place nationally in the art song division of The American Prize in Voice.

Not a stranger to musicals or new music, Mr. Cavalieri sang the role of Panloss for the Milanese debut of Bernstein's *Candide* with the

GUEST ARTIST PROFILES

Orchestra Sinfonica di Milano and in collaboration with RealTime Opera and SO Percussion, debuted the title role in *Feynman*, a one-act mixed media opera for percussion and baritone.

The Chicago Sun-Times called his voice "rich and juicy" and Chicago Classical Review proclaimed his "rounded tone and poised, flexible expression could not have been more communicative" (Grieg's Four Hymns) and "not only a fine comic actor, but who sang with a baritone that sounded quite luxurious for a role that more often emphasizes comedy over vocalism." (*HMS Pinafore*) He sings regularly with the Chicago Symphony Chorus and can often be found with the Lyric Opera of Chicago Chorus and the Grant Park Music Festival. He is a board member of the Center for Performing Arts at Governor State University. He resides with his family in Homewood.



Susan DeMarco is the Director of Sacred Music at St. Frances Cabrini Catholic Church in West Bend, Wisconsin, where she directs an adult choir, a men's chant schola, a children's choir, and a funeral choir. She received her bachelor's degree in Music and Spanish from the University of St. Thomas in Houston, TX, where she studied organ under Dr. Robert Bennett

and later completed a Master's in Sacred Music at the same university, studying organ with Dr. Jeong-Suk Bae. Some of her past recitals have included a recital of music entirely from Spain and Latin America and the Dupré Stations of the Cross. She has previously served as the Director of Liturgical Music at St. Francis Borgia Catholic Church where she founded the St. Cecilia Organ Program to teach pianists to play the organ, with an emphasis on playing for Catholic Masses. She has also served as the Assistant Music Director at St. Theresa Catholic Church in Sugar Land, Texas, St. John Vianney Catholic Church in Houston, Texas and the Director of Music at St. Matthias Catholic Church in Magnolia, TX. She resides in Port Washington, Wisconsin, with her husband Eric and their four children.

DUPAGE CHORALE PROFILES

DuPage Chorale is a college/community chorus that presents quality concerts of fine choral music. Its seasons present a broad range of literature ranging from oratorios to masses to operettas and musical theater. Through the years, members have found the joy of singing master works by composers like Bach, Handel, Mozart, Haydn, Beethoven, Brahms, Mendelssohn, Poulenc, Fauré, Copland and Bernstein. They have also explored major works in the jazz and popular idioms by Dave Brubeck, Duke Ellington, Gilbert & Sullivan, Kurt Weill, Rodgers and Hammerstein, and Lerner & Loewe. Members have explored time and space with music of the past and present and music from the corners of the globe. They toured Europe in 2000 and 2003. Most importantly, the members of the DuPage Chorale have learned the joys of communal singing in a supportive atmosphere that values them as individuals and as members of a community with shared goals and ideals. DuPage Chorale was the first music ensemble created at College of DuPage.



Dr. Patrick O'Shea (Director) holds the degree of Doctor of Musical Arts in Choral Music from Arizona State University, Master of Music degree in Choral Music from the University of Illinois at Urbana-Champaign, and Bachelor of Music degree, summa cum laude, in Vocal Performance from Shenandoah Conservatory in

Winchester, Va. His composition teachers have included the late Russell Woollen, as well as Thomas Fredrickson and Randall Shinn. He has served frequently as a clinician and adjudicator, and has been commissioned to write new works, particularly for choral and chamber music ensembles. Dr. O'Shea is a member of the American Choral Directors Association, the American Society of Composers Authors and Publishers, American Composers Forum, and Phi Mu Alpha Sinfonia music fraternity.



Enjoying a national reputation as an accompanist, chamber musician, adjudicator and clinician, **William Buhr's** work as a collaborative pianist has taken him to performing engagements in over thirty countries on six continents. Buhr has served on the accompanying staff of the Chicago Symphony Chorus at the invitation of

founder/director Margaret Hillis, and has accompanied James Levine,

DUPAGE CHORALE PROFILES

Michael Tilson Thomas, Yo-Yo Ma, June Anderson, Berndt Weikl and others at the Ravinia Festival. He has also worked with Stephen Sondheim, Patti LuPone, Audra McDonald and Cerveris in the Ravinia Festival productions of *Sunday in The Park with George* and *Anyone Can Whistle*.

Holding degrees from the University of Illinois and DePaul University, Mr. Buhr has appeared in many international festivals as well as numerous national and regional conventions of major musical and educational organizations. Mr. Buhr has served on the faculty of the Choral Music Experience Institute for Choral Teacher Education with Doreen Rao since its inception in 1986, and has played for the national touring companies of numerous Broadway musicals including *Showboat*, Disney's *Beauty and the Beast*, and *The Phantom of the Opera*. He has served as the accompanist of the New Classic Singers since 1986, and has enjoyed an association with Anima - Young Singers of Greater Chicago (formerly the Glen Ellyn Children's Chorus) since 1984.

Dining Partners

Eat, drink & enjoy -
MAC dining partners

For all your pre-show meals and post-show bites, we are thrilled to be partnering with these neighborhood restaurants. Our dining partners offer MAC patrons exclusive discounts and special offers. All MAC ticket orders receive coupons to these local favorite restaurants!

a toda madre

ADELLE'S
FINE AMERICAN FARE

GLEN PRAIRIE
LOCAL FLAVOR
FINE FOOD & DRINK

Santa Fe
Mexican Restaurant

RESERVE
22
RESTAURANT BAR EVENTS

NOBEL HOUSE

Friends of the MAC

The Friends of the MAC is a family of those who have decided that a world-class performing and visual arts center should reside in their community. Ticket sales provide only 42 percent of our \$4 million operating budget. It is through the support of College of DuPage and through the generous gifts from patrons and local businesses that we can keep art in our museum and on our stages.

Your Gift to the MAC

- Brings nationally and internationally renowned artists to our community
- Supports our SchoolStage program that annually offers affordable arts experiences to thousands of schoolchildren
- Provides students and community members the opportunity to interact with artists
- Enhances quality of life in our community

Without the generous support of the Friends of the MAC, we would not be the beacon for the arts in DuPage County. We gratefully thank our friends, and we invite others to join them.

Arts Center and MAC-tastic Treat Seats Endowments

Donor may choose to direct gifts to the Arts Center Endowment or the MAC-tastic Treat Seats – Tickets for Kids & Families Endowment. Donations made to these MAC Endowments, our “savings accounts,” go into principal secured, invested accounts that will provide ongoing support for arts programs and arts accessibility for years to come.

The McAninch Arts Center and the College of DuPage Foundation can also provide you with information on planned giving options, gifts of stock, IRA Charitable Rollovers and other giving opportunities.

For complete details, visit the MAC Box Office or contact the College of DuPage Foundation at (630) 942-2462 or foundation@codfound.org.

College of DuPage
FOUNDATION 

FRIENDS OF THE MAC

McAninch Arts Center acknowledges and gives grateful thanks to those donors who have contributed in support of the MAC mission and vision. This list of donors reflects contributions made from Dec. 1, 2021 – Aug. 31 2023. While we carefully prepared this list, we recognize that errors may have occurred. Please accept our apology if you are not properly represented on this list and contact the College of DuPage Foundation at (630) 942-2462 so we may correct our records.

Leadership Circle (\$5,000 and up)

Anonymous (5)
Anna Ball
Bank of America
Brookdale Glen Ellyn Senior
Living Community
Mr. Todd Buckton
Dr. and Mrs. Christopher B.
Burke
Mrs. Clark G. Carpenter
Ryan T. Christian
Clayco
Consolidated Flooring
Dr. and Ms. Mark A. Curtis-
Chavez
DuPage Foundation
Enertherm Corporation/Russ
& Judy Flores
Follett Higher Education Group
Frank B. Modruson Lynne C.
Shigley Family Charitable
Fund
Mr. David J. Frank
G. Carl Ball Family
Foundation
JCS Fund of DuPage
Foundation
Mr. and Mrs. Richard
Komarek
Legat Architects, Inc.
David and Carolyn May
Dr. and Mrs. Harold D.
McAninch
Margaret and Michael McCoy
Jane E. Moore
Joan Morrissey
Nicor Gas
Mr. and Mrs. Mark A.
Peterson
John Rutledge and Betty
Joseph
Charles Schlau
Mr. and Mrs. Frank
Shoemaker
STG Divorce Law
Terrence J. Taylor and
Maureen Sullivan Taylor
TJ Moore Giving Fund -
Fidelity Charitable
TM Financial Forensics, LLC
Mr. and Mrs. Avram Tucker
Wight & Company

Mark Wight and Eszter
Borvendeg
Mr. and Mrs. Mark Wright

Encore Circle (\$2,500–\$4,999)

Lowell and Barbara Anderson
Mr. and Mrs. Mark F. Baggio
Dr. and Mrs. Brian W. Caputo
John and Pamela Dalby
Raju Datla
Mr. Ryan M. Ellison
Debbie Fulks
Greg and Alexandra Hart
Mr. Dennis Hiffman
Representative Terra Costa
Howard and Nick Howard
Mr. Robert Hutchinson
Mr. and Mrs. Walter J.
Johnson
Mr. and Mrs. James H.
Knippen, II
Karen and Gene Kuhn
Mr. and Mrs. Richard Lamb
And Susan and Richard
Lamb Charitable Fund of
The DuPage Foundation
Katherine and Gary Lietz
Mr. and Mrs. Mike Macakanja
Marilyn H. Wolff Foundation
Ms. Diana L. Martinez
State Rep. Deanne M.
Mazzochi
Rowan Miranda
Ms. Barbara Murphy
Drs. Donald E. and Mary
Ellen Newsom
Mr. and Mrs. Richard Nye
Judith May O'Dell
Joan and Bob Olach
Dorothy I. O'Reilly
Meri Phillips
Kelly and Roland Raffel, in
memory of Herbert K.
Raffel
Gary and Mary Rash
Kenneth and Cathryn Reick
Mr. Paul Rom
Sander's Fine Portraits
Mr. and Mrs. Steven E. Shebik
Kristin and Peter Shulman
TC WealthPartners/Trust
Company of Illinois

John and Colleen Tovar
James and Patricia Vary
Vistex, Inc
West Suburban Art Society
Dr. Donald G. Westlake
Wheaton Bank and Trust - A
Wintrust Community Bank
Hon. Bonnie M. Wheaton
Wintrust Financial Corp
Ms. Kathleen Yosko

Director's Circle (\$1,000–\$2,999)

Anonymous (6)
Robert and Lynne Anderson
and Robert and Lynne
Anderson Charitable Fund
of US Charitable Gift Trust
Dana Andrewson
Ms. Nancy Arango
Ms. Charlotte Babitzke
Joseph and Betsy Ballek
Milt and Heide Bentley
Prof. and Mrs. Charles E. Boone
Ronald and Hope Bucher
Connie Canada Howard and
Rex Howard
Cantigny Golf Club
Chef by Request Catering
Cray, Kaiser, Ltd.
Mr. and Mrs. Philip W.
Denemark
Janet Derber
James and Marie Drasal AND
Drasal Family Fund of
Fidelity Charitable Gift Fund
Rosemary Ellis
Mrs. Carol L. Fox Girovich and
Mr. Howard Girovich
The Giragos Family, in memory
of Dr. Henry G. Giragos and
Jeanette N. Giragos
Bill Gladden
Mr. and Mrs. Lionel Go
Mrs. Margaret R. Hernandez
Mr. and Mrs. John A. Herndon
Hyatt
Mr. and Mrs. James Klang
Charlene Kornoski-Du Vall
La Quinta Resort & Club
Mr. Larry C. Larson
Linda Lauterbach
Ms. Nancy Lehrer

FRIENDS OF THE MAC

David Leners
 Ms. Elaine Luther
 Norma and Robert Lyon
 Ms. Jennifer Mackey
 Tipton and Marilyn McCawley
 John and Lynette McCortney
 Mr. and Mrs. David Millhouse
 LTC and Mrs. James
 Milobowski
 Bill and Nancy Moore
 Ms. Emi Murata
 Mr. and Mrs. Larry G.
 Murdock
 Mr. and Mrs. Nick Nagele
 Mr. Adam J. Nuger
 Jane Oldfield
 Mr. and Mrs. Robert D. Owen
 Helen Pachay
 Madeleine Pachay
 Linda Picchiotto and Walter
 Habrylewicz
 Mr. and Mrs. Paul P. Pyrcik, Jr.
 Barb and Kell Reimann
 Reliable Home Improvement
 Renaissance Esmeralda
 Resort & Spa
 Ms. Rene' M. Richards
 Al and Cecile Robinson
 The Rev. Dr. Curtis and
 Leanne Rolfe
 Judy Ronaldson
 Mr. and Mrs. Brad Rosley
 Ms. Theresa M. Sak
 Ms. Lisa Sallwasser and Mr.
 Geoffrey Bevington
 Lisa Savegnago and Randy
 Johnson
 Mr. John Schofield
 Mr. and Mrs. Kenneth
 Serwinski and the Kenneth
 and Nancy Serwinski
 Charitable Fund - Schwab
 Charitable
 Mr. and Mrs. John Smith
 Geraldine Smrcina
 Marilyn Smrcina
 Judith S. Thuer
 Angel and Troy Traub
 USG Foundation
 Karen M. Varble
 Mr. and Mrs. Michael R. Webb
 Whiskey Acres
 Scott and Kristen Wiersum
 Mr. Tyler Wisner
 Mr. and Mrs. Ethan Zelizer

Ambassador Circle (\$500-\$999)

Anonymous (4)
 Young Ahn

Mr. and Mrs. Thomas
 Anderson
 Col. and Mrs. Renato P.
 Bacci, Jr.
 Viera Bakova
 Mr. Alvin Barnickel
 Mrs. Eunice Becker
 Emily Bell
 Mrs. Deborah F. Borge
 Mr. and Mrs. Larry Boward
 Mr. and Mrs. James Burdett
 Ed and Kay Burton
 Cabernet & Company
 Capt. Bernardo Iorgulescu
 USMC Memorial Fund
 DuPage Foundation
 Mr. Robert B. Chasteen
 Chicago White Sox
 Community Foundation of
 Will County
 Dr. Helen Dane, DVM
 Cara Degraff
 Senator Kirk Dillard
 Mark and Kim Dorn
 William and Kathleen
 Drennan
 Drury Lane Theatre
 Megan Elberts
 Eugene W. Rzym Giving
 Fund - Fidelity Charitable
 Anonymous Design, Inc.
 Marcela Fanning
 Ms. Marla Felsten
 David and Janet Fox
 James and Nancy
 Gianfrancisco
 Ginni and Chris
 Brian and Lynne Hamm
 Ms. Leah Harding
 Mr. and Mrs. Robert G.
 Hartman
 Health Track Sports Wellness
 Mr. Glenn Hopkins
 Mrs. Beatriz Iorgulescu
 Jon and Ruth Good
 Foundation - Fidelity
 Charitable Fund
 Karl and Lee Ann Karnatz
 Virginia and Charles
 Klingsporn
 Ms. Marilyn Kloc
 Mr. Mike Klopmeier
 Ida Lee
 Ms. Alixe Lischett
 Mr. and Mrs. Deryk A.
 Madsen
 Mr. and Mrs. Jim Mark
 Mr. and Mrs. William E.
 Matte, Jr.
 Joseph McConellogue

Mr. and Mrs. David M.
 McGowan
 Mr. Donald E. McGowan and
 Ms. Mary L. Prazak
 Mr. and Mrs. Charles
 Meagher
 Michael and Sandra Meyers
 Gary Miller
 Mr. and Mrs. Michael
 Morrissey
 Mr. and Mrs. Brian Nugent
 Karen Webb Owen
 Jim and Lorraine Paulissen
 Mrs. Edie Postiglione
 Stephanie Powell
 Ginny and Don Raths
 Mr. and Mrs. Randall Riley
 Ms. Donna Romero
 Mr. and Mrs. James Ryan
 Mr. Eugene Rzym And the
 Eugene W. Rzym Giving
 Fund of Fidelity Charitable
 Mr. and Mrs. Bruce Sewick,
 LCPC
 Mike Sitrick
 Skeet and Laura Skeet
 Sutton Studios
 Dr. Eric H. Swanson and Mrs.
 Lori A. Swanson
 Rhea Vytlaclil
 Western Springs Music Club
 Jo Anne Zipperer

Performer (\$250-\$499)

Anonymous (3)
 Mr. and Mrs. Lewis R.
 Achenbach, III
 Mr. and Mrs. Bruce A.
 Adamec
 Mr. and Mrs. Keith E. Allen
 Mr. and Mrs. Brandon
 Anderson
 Mr. Raymond Arenson
 Arrowhead Golf Club
 Vickie Austin
 Amelia Barrett
 Jack and Mary Ellen Barry
 Gayle and Don Bartell
 Biff Behr and Lynne Richman
 Jim and Sandy Boves
 Mr. Franklin E. Boves
 Breakthru Beverage Group
 Cecilia and William Bulger
 Christina Burke
 Mike Calabrese
 Greg and Janet Chejfec
 Mr. and Mrs. Alan L. Clark
 Ms. Patricia Conway
 Cornerstone Restaurant
 Group

FRIENDS OF THE MAC

Costello Jewelry
 Ms. Carol Cousin
 Mr. James M. Cronin
 Bill Curry and Gretchen Fleming
 Sharon D'Alessandro
 Dempsey-Musker
 George W. and Ann Dervis
 designSPEAK llc
 Marilyn and Gene Dicola
 Barbara DiGuido
 Ms. Mira Maureen Dolph
 Ms. Anita Dykema
 William and Sally Newton Fairbank
 Tony Freeman
 Kim Hahn
 Suzanne and Leo Hart
 Lance Herning and Nancy Redmond
 Sue Hervey
 Ms. Jane Hoyum
 Mr. and Mrs. Frank C. Hudetz
 Ms. Gail Kalinich
 John P. and Catherine M. Kos
 Mr. Dale J. Kuby
 Gregory and Kristine Larsen
 Le Meridien Chicago Oak Brook
 Mrs. Anne Leventry
 Ms. Donna J. Luce
 Mr. and Mrs. Edward Makauskas
 Ms. Maureen Malloy
 Marcel's Culinary Experience
 Barb and Scott Marquardt
 Ellen and Daniel McGowan
 Florine McKay
 Ms. Jill McWilliams
 Mr. and Mrs. John Meier
 Dr. John Messitt
 Mr. and Mrs. Kenneth Metcalfe
 Matt Mouw
 Ms. Allison Odak-Dolph and Mr. Frank Pecora
 Olive 'N Vinnie's Oil and Balsamic Bar
 Gayle Orlando
 Mr. and Mrs. William Parker
 Ms. Erin Peterson
 Mr. and Mrs. Mark Pfefferman
 Rohan and Merlyn Phillips
 John J. and Mary A. Plunkett
 Karina Ramos
 Ms. Diane G. Rath
 Ms. Patricia Read
 Joel Riley

Ms. Kaylin Risvold
 Ms. Yolanda E. Rocio
 Arun Roy
 Tina Rudins
 Janey Sarther
 Mr. Larry Schouten
 Gerry Sczygiel
 Mr. and Mrs. Richard J. Sieracki
 Mrs. Marilyn A. Steenwyk
 Cherry Stoddard
 Mr. and Mrs. Phil Tarallo
 Anthony and Mona Taylor
 Mr. and Mrs. James Taylor
 Ms. Candy Theobald
 Paul Thompson
 Mr. Stephen Thompson
 Mr. and Mrs. Garry Vaccaro
 Mr. David Victor
 Kathryn Voland-Mann and Bob Mann
 Mr. and Mrs. Gus Vonderheide
 Penelope Wainwright
 Mr. and Mrs. Thomas Wcisel
 and the Wcisel Charitable Fund of Schwab Charitable
 Mr. and Mrs. Anthony J. Wdowiarz
 Ms. Kathy Wessel
 Rich and Kathy Wilders
 Ms. Kathleen M. Wright
 Mr. and Mrs. Robert Wulffen
 Yorktown

Friend (\$50-\$249)

Anonymous (23)
 Tony Achilles
 Sue Adams
 Peggy Aldworth
 Lisa Ancona-Roach
 Mrs. Lynnette Arendt
 Mr. and Mrs. Mike Armbrust
 Ms. Christine A. Aument
 Aurora Civic Center Authority
 Darlene Barger
 A. C. Barnicle
 Ms. Constance Barreras
 Harold and Karen Bauer
 Ms. Colleen Bell
 Daniels Family
 Belleza Skin Care Institute
 Mr. Edwin Berndt
 Mr. Gregory Bewick
 Mr. Leonard Bielefeldt
 Mrs. Germaine Bird
 Mr. and Mrs. James Borus
 Ms. Joan Brady
 Dr. and Mrs. Michael Bresolin

Broadway in Chicago
 Ms. Joanie Brosnan
 Mr. George Bruce
 Bubblehouse Brewing Company
 Perry and Julie Bump
 Mildred and Harold Burrow
 Mr. and Ms. Mark Bussey
 Ms. Virginia Cantu
 Ruth and Ken Carlson
 Ms. Jennifer Carrillo
 Jim Carsten
 Mr. Joseph Cassidy
 Mr. and Mrs. Sean Casten
 Mr. Bruce Caster
 Chawla & Associates CPAs
 Ms. Diana Christopher
 Mr. and Mrs. Mike Cittadino
 Clayspace Ceramic Arts Center
 Ms. Ann E. Cliff
 Megan and Peter Clifford
 Ms. Kathi Clinton
 Judy Coates
 Ms. Linda Coen
 The Collective, A Lifestyle Boutique
 Cooper's Corner
 Marty and Mary Cosgrove
 The Crafty Shop & Supplies
 Creme de la Creme Boutique
 Robert Culler
 Ms. Diane M. Curtis
 Ms. Katherine Damitz
 Jeanne Davik
 Joy and Ron Detmer
 Ms. Rosalinda Dominguez
 DoubleTree by Hilton Lisle Naperville
 Ms. Alice Douglas
 Jenny Dunbar
 Mr. and Mrs. Bernard L. Eddy
 Daniel Edelman and Fran Kravitz
 Ms. Jennifer Evans
 Miles Evans
 Expedia
 Christine and Craig Fenne
 Mr. and Mrs. Donald H. Fischer
 Ms. Gretchen Fleming
 Eric and Marilyn Fors
 Fox Valley Park District
 Ruta Freimanis
 Jay French
 William Fullriede
 Mr. and Mrs. Edward Fussner
 Ms. Victoria Gacki
 Jan Gahala
 Mary Jane Garrett

FRIENDS OF THE MAC

Jody Gauthier
 Mr. Christopher A. Gekas
 Mr. and Mrs. Daniel Glab
 Dr. Gloria Golec
 Mr. Gerald W. Good
 Goodman Theatre
 Ms. Karen Hanmer
 Ms. Sheila M. Hanssen
 Lubna and Faraz Haque
 Diana and Gary Harper
 Rebekah and Rodney Harris
 Mr. and Mrs. Thomas R.
 Hattan
 Brad and Vicky Hauserman
 Mr. and Mrs. James Helt
 Susan S. Hennig
 Kathleen Herbach
 Ms. Erin Herman
 Ron Hilton
 Ms. Martha A. Hirsch
 Richard and Shirley Holt
 Judy A. Hoskins
 Hyatt Lisle
 Stephanie Iglehart
 Mr. and Mrs. Kevin R. Illia
 Ms. Pam Imbeau
 Mr. Charles Jakubowski
 Ms. Joanne Jannsen
 Ms. Adriana Janutka
 Jennifer Rizzo Design
 Company
 Ms. Jean M. Jeske
 Edward and Susan Jeszka
 Mary Ann Jirak
 Mr. and Mrs. Tomas
 Johansson
 John P and Catherine M Kos
 Charitable Fund
 Jolie Charcuterie
 Ms. Lee Ann Jones
 Alisa Jordheim
 Cory Kammer
 Ms. Ileen Kelly
 Kendra Scott
 Ms. Violet Kerbbel
 Mr. Lee R. Kesselman
 Ms. Bernadette Kniebusch
 Ms. Carole Kohout
 Ms. Deborah A. Kolek
 Elaine and Roger Kolman
 Ms. Beth Komel
 Ms. Anne Kopke
 Ms. Lori Kramer
 Ms. Shelley Krause
 Ms. Barbara L. Kristin
 Mary Krska
 Ms. Serena Krush
 Mr. John L. Ladle, Jr.
 Ms. Kathryn S. Lahey
 Mr. and Mrs. William Laing
 Gourmet Express Marketing,
 Inc.
 Ms. Kathleen Graffam
 Ms. Aldona Green
 Ms. Adrienne Gregory
 Ms. Cathy Griffin
 Emile Lattyak
 Ms. Lea Lazarus
 Ms. Kristen Lenhardt
 Ginny Lennon
 Mr. and Mrs. John Liedtke
 Travis Linderman
 Lisle Chamber of Commerce
 Lisle Library Dist.
 Lisle Park District
 Ms. Mary Locher
 Mr. and Mrs. Andrew Luce
 Liz Luszczyk
 Lynfred Winery
 Bob Machacek
 Maggiano's Little Italy
 Thomas Manak
 Marinella's Ristorante Italiano
 Ms. Shannon Marsden
 Ms. Marion S. Martin
 Diane Maurer
 Ann McDonald
 Marty and Marian McGowan
 Ms. Susana Melgoza
 Jackie Micek
 Mr. and Mrs. Craig Miller
 Ms. Liz Minogue
 Ms. Cheryl R. Moen
 Daniel and Marilyn
 Montgomery
 Mr. and Mrs. Michael Moon
 Ms. Kimberly G. Morris
 Bud and Pat Motz
 Ms. Lois Mouhelis
 Terry Mueller
 John Mulherin
 Ms. Melanie J. Murphy
 Dr. Jim Murray
 Barbara and Ted Nagengast
 Mr. and Mrs. Tom Newmann
 Kathy Culver Nickell
 Michael and Judith Nigro
 Ruth Oberg
 Ms. Sharon L. Ochwat
 Mr. and Mrs. Glenn Ohlson
 Ms. Judith W. Olson
 Tom and Karen Ostrander
 Alice E. Packard
 Mr. and Mrs. Anthony G.
 Padgett
 Mr. Kenneth Paoli
 Patricia Paolicchi
 Kurt Parent
 Byrd and Alice Parmelee
 Past Presence Framing
 Ms. Wanda Gustas
 Sarah Gutierrez
 Donna Guy
 Ms. Amy Hallowell
 Mr. Rich and Mrs. Deb Hall-
 Reppen
 TD Paulius
 Ms. Kimberly Peckenpaugh
 Thomas and Amy Perkins
 Ken and Maria Peterson
 Mr. and Mrs. Patrick
 Peterson
 Robbie Plank
 Sarah Poeppel
 Quintin Porter
 Portillo's Restaurant Group
 Ms. Karen Poulos
 Ms. Lynda Pratscher
 Dale Prest
 Pulse Studio
 Puttshack
 John and Mandy Rakow
 Ms. Ruth Anne Rehfeldt
 Jackie Reich
 Ms. Tracey J. Reid
 Ms. Alesha Renee
 Mr. and Mrs. Kenneth
 Robbins
 Mr. Dennis Rockett
 Mr. Bruce Rodman
 Mr. Eric Rodriguez
 Nancy L. Ruby
 Douglas and Barbara Rundell
 Sandra Sansone Brennan
 Mr. Russ Scanio
 Ms. Maureen Schoenbeck
 Ms. Jane E. Schubert
 Scrim Esports Gaming
 Center
 Ms. Sherie Shapiro
 Ms. Vicki L. Shargo
 Sheraton Hotel
 Mrs. Kristie Shinohara
 Shiny Squirrel Art Studio
 Ms. Susan Simek
 Mr. and Mrs. Todd Simmons
 Mrs. Helen W. Sladek
 Barbara Smith
 Ms. Rose M. Soraich
 Mrs. Sherry Spengel
 Mr. Paul Spotts
 Lynn St Germain
 Mr. and Mrs. D. G.
 Stephenson, Jr.
 Ms. Cheryl Stoneking
 Melissa Striedl
 Norma C. Stroner
 Ms. Angela Stroud
 Mr. and Mrs. Frank Studnick
 Su Ki's Salon

FRIENDS OF THE MAC

Ms. Melissa Sullivan
 Dr. William Scheftner and
 Mrs. Sheila Susman-
 Scheftner
 Suzette's Creperie
 Dr. Nancy Svoboda
 Dr. Diane R. Szakonyi
 Kasia Szczesniwski
 Tom and Janet Szot
 Ms. Helen B. Szymanski
 Ms. Kathleen Talenco
 Mr. and Mrs. Sam Taves
 Ms. Laverne Tedeski
 Mr. John Teschky
 TIAA
 Colleen and Paul Trinko
 Jean S. True
 Two Bostons
 Patricia and Anthony Vahcic
 Ms. Lisa Vargas
 Ms. Francine Venegas
 Ms. Deborah L. Venezia
 Viki Vestuto
 Village Links of Glen Ellyn
 Susan Vogt
 Walden Floral Design Co.,
 Inc.
 Ms. Cathleen Wallin
 Larry Ward
 Mr. and Mrs. Bill Wash
 WBEZ 91.5 Chicago
 Judy Webster
 Patricia and Richard Weichle
 Anne and Jim Wengerd
 Scott and Danielle Wette
 Mr. and Mrs. Michael
 Wheeler
 Robert and Jeanne Whisler
 Debbie Whiston
 Joan and Raymond Wielgos
 Lenore Wilcox
 Ms. Sandra Wildermuth
 Ms. Kathy Wilders
 Mr. William Womack
 Diane Meiborg and Roger
 Zacek
 Mr. Richard Zuckerman

**Corporate and Community
 Sponsors**
 A Toda Madre
 Adelle's Fine American Fare

Anonymous Design, Inc.
 Arrowhead Golf Course
 Aurora Civic Center Authority
 Bank of America
 Ball Horticultural Company
 Belleza Skin Care Institute
 Breakthru Beverage Group
 Broadway in Chicago
 Brookdale Glen Ellyn
 Bubblehouse Brewing
 Company
 Cabernet and Company
 Cantigny Golf Course
 Chef By Request Catering
 Chicago White Sox
 Clayspace Ceramic Art
 Center
 Clayco
 The Collective
 College of DuPage
 Foundation
 Consolidated Flooring
 Cooper's Corner
 Cornerstone Restaurant
 Group
 Costello Jewelry
 The Craft Shoppe & Supplies
 Cray Kaiser, Ltd.
 Crème de la Crème Boutique
 designSPEAK, LLC
 DoubleTree by Hilton Lisle
 Naperville
 Drury Lane Theatre
 DuPage Foundation
 Enertherm
 Enjoy Illinois/Department of
 Commerce and Economic
 Opportunity
 Follett
 Fox Valley Park District
 G. Carl Ball Family
 Foundation
 Glen Prairie
 Goodman Theatre
 Gourmet Express Marketing,
 Inc.
 Health Track Sports Wellness
 Hyatt/Hyatt Lisle
 Illinois Arts Council Agency
 Jennifer Rizzo Design
 Company
 Jolie Charcuterie

JCS Fund of the DuPage
 Foundation
 La Quinta Resort + Club
 Le Meridien Chicago Oak
 Brook
 Legat Architects, Inc.
 Lisle Chamber of Commerce
 Lisle Library District
 Lisle Park District
 Lynfred Winery
 Marcel's Culinary Experience
 Maggiano's Little Italy
 Marinella's Ristorante Italiano
 Nicor
 Nobel House
 Nothing Bundt Cakes
 Olive 'N Vinnie's
 Past Presence Framing
 Portillo's Restaurant Group
 Pulse Studio
 Puttshack
 Reliable Home Improvement
 Renaissance Esmeralda
 Resort + Spa
 Reserve 22
 Santa Fe Restaurant
 Scrim Esports Gaming
 Center
 Sheraton Hotel
 Shiny Squirrel Art Studio
 STG Divorce Law
 Su Ki's Salon
 Sutton Studios
 Suzette's Creperie
 TC Wealth Partners
 TM Financial Forensics, LLC
 Two Bostons
 Village Links
 Vistex, Inc.
 Walden Floral Design Co.,
 Inc.
 WBEZ
 90.9FM WDCB
 West Suburban Art Society
 302 Wheaton
 Wheaton Bank and Trust-A
 Wintrust Community Bank
 Whiskey Acres
 Wight and Company
 Wintrust Financial
 Corporation
 Yorktown

HOUSE NOTES

- Cameras and recording devices are not allowed in the theater and are prohibited by our contracts with the artists.
- Smoking is not permitted in the theater or on campus.
- For your comfort and security, all backpacks and large bags must be checked.
- Please turn off all cell phones and any other alarms while in the theater.
- Emergency phone number at COD Police Department for after-hour calls is (630) 942-2000.
- Latecomers seated at discretion of the House Manager.
- Groups of 10 or more may contact (630) 942-3026 or grouptix@cod.edu to arrange for group discounts.
- If you notice a spill in the theater, please notify an usher.
- McAninch Arts Center volunteers are people who assist the house staff in areas of ticket taking, ushering and general management during performances. To get involved, call (630) 942-3705.
- For **Americans With Disabilities Act** accommodations, call (630) 942-2141 (voice) or (630) 858-9692 (TDD).
- **Infrared Assistive Listening Devices:** For audience members who desire audio amplification of performances, headsets with individual volume controls are now available. You may check out the headsets at the Box Office with a driver's license. *Underwritten by a generous gift from The Knowles Foundation.*

MAC STAFF LISTING

MAC Administrative Staff

| | |
|---|-------------------|
| Director of the McAninch Arts Center..... | Diana Martinez |
| Business Manager..... | Ellen McGowan |
| Project Manager..... | Kari Schoettle |
| Business Office Assistant..... | Brianna Garcia |
| Curator, Cleve Carney Museum of Art..... | Justin Witte |
| Assistant Curator..... | Julia Walker |
| Gallery Assistant..... | Maria VanDyken Li |
| Marketing and Patrons Services Coordinator..... | Janey Sarther |
| Graphic Designer..... | Wendy Melgar |
| Director of Development for Cultural Arts..... | Janie Oldfield |
| Administrative Assistant..... | Mandy Rakow |
| Student Clerical Assistant..... | Blake Litz |

MAC Box Office and Front of House Staff

| | |
|---|------------------------------|
| Box Office Manager..... | Julie Elges |
| Assistant Box Office Supervisors..... | Jim Gosling, Elise Wash |
| Box Office Assistants..... | Patrick Garon, Tatia Hegrans |
| Patron Services Manager..... | Tom Murray |
| Assistant Patron Services Supervisor..... | Deborah Kolek |
| House Manager/Volunteer Coordinator..... | Rob Nardini |

MAC Resident Professional Ensembles

| | |
|--|-----------------------|
| Buffalo Theatre Ensemble, Artistic Director..... | Connie Canaday Howard |
| Buffalo Theatre Ensemble, Associate Artistic Director..... | Amelia Barrett |
| Buffalo Theatre Ensemble, Business Manager..... | Bryan Burke |
| New Philharmonic, Music Director and Conductor..... | Kirk Muspratt |
| New Philharmonic, Associate Conductor and Librarian..... | Benjamin Nadel |
| New Philharmonic General Manager..... | Paula Cebula |
| New Philharmonic Personnel Manager..... | Karen Dickelman |

MAC Design and Technical Staff

| | |
|--|---------------------|
| Technical Production/Lighting/Sound Coordinator..... | Richard Arnold, Jr. |
| Technical Theater Assistant Coordinator..... | Sabrina Zeidler |
| Costume and Make-up Design Coordinator..... | Kimberly G. Morris |
| Assistant Costume Coordinator and Stitcher..... | Gretchen Woodley |
| Production Manager..... | Joe Hopper |
| Sound and Lighting Specialist..... | Ben Johnson |
| Lighting Production Specialist..... | Elias Morales |
| Audio Production Specialist..... | Fisher Parsons |
| Events Production Specialist/Tech. Director – BTE..... | Caitlyn Woods |

BROOKDALE

*Whatever we can do to help,
we'll do it with care.*

At Brookdale, your loved one is a member of our family. You'll find our care is delivered with knowledge gained from serving families for generations. Join our community to discover how you or your family member will feel right at home.



BROOKDALE
— SENIOR LIVING SOLUTIONS —

brookdale.com

For more information, contact (630) 446-1506
or mmetzger1@brookdale.com.

Brookdale Glen Ellyn (formerly The Meadows)
Independent Living
Assisted Living
60 North Nicoll Ave | Glen Ellyn, IL 60137
(630) 446-1600

02001

