



THE OUTGOING TIDE





Dear Friends of BTE,

Welcome to Buffalo Theatre Ensemble's 37th Anniversary Season! We believe deeply in the common, immediate and ephemeral, shared experience of theatre, and are so happy you are joining us – some of you continuing your commitment to theatre and to BTE in the coming year, and some of you joining our 'family' for the

first time. We're excited to share with you these three productions, told from very different perspectives, which are engaging, at times humorous and though-provoking. We so appreciate you, our subscribers, who are our extended family – and we look forward to the coming season with much excitement and joy.

We will continue to place at the highest priority the safety of both our audiences and artists. Please check AtTheMAC.org and BTEChicago.com for up-to-date safety information.

Sincerely,

The Ensemble

Aly Greaves Amidei[^], Robert Jordan Bailey⁺, Amelia Barrett⁺ (Associate Artistic Director), Bryan Burke⁺ (Business Manager), Robyn Coffin, Rebecca Cox, Lisa Dawn, Nick DuFloth, Jon Gantt, Loretta Hauser (in memoriam), Connie Canaday Howard⁺ (Managing Artistic Director), Christopher Kriz[^], Michael W. Moon, Kurt Naebig⁺, Laura Leonardo Ownby, Galen G. Ramsey⁺, William "Sandy" Smillie, Kelli Walker and Norm Woodel. For more information about BTE, visit btechicago.com.

BTE Board of Directors: Margaret Aldworth, Robert Jordan Bailey, Amelia Barrett, Connie Canaday Howard, Ted Donner (Vice President), Elyse Kennard, Brandee Martin-Horton (President), Laura Leonardo Ownby (Secretary), Anthony Tumea (Treasurer).

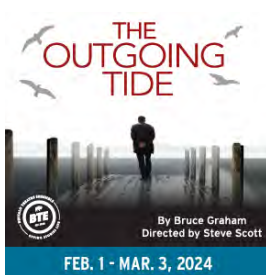
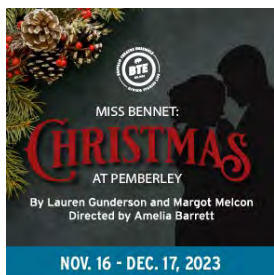
Legal Counsel: Derek Johnson

Members Emeriti: Robert Cappetta, Peggy Connolly, Rebecca Cox, Lisa Dawn, Ida Hagman, Diane Hicks, Richard Jarman, Michael J. McCoy, Joan Morrissey, Kurt Naebig, Carolyn Oesterle, John K. Rutledge, Sandra Sansone Brennan, Colleen Trinko, Kelli Walker, Kathy Wessel, Bonnie Wheaton, Richard Wilders, Norm Woodel, Mary Ann Zlotow

⁺ Member of Actors' Equity Association, the Union of Professional Actors and Stage Managers

[^] Member of United Scenic Artists, Local 829

BTE's 23-24 Season is dedicated to the memory of our dear friends Loretta Hauser and Michael J. McCoy, with deep appreciation.



DuPage
Foundation

Arts
DuPage

benevity

College of DuPage
FOUNDATION

choose
dupage



Buffalo Theatre Ensemble Presents

The Outgoing Tide

by **Bruce Graham**

Director
Steve Scott‡

Original Music & Sound Design
Christopher Kriz+^

Scenic Design
Jacqueline and Richard Penrod^

Costume, Hair & Makeup Design
Aly Greaves Amidei+^

Lighting Design
Garrett Bell

Properties Design
Rachel Lambert

Managing Artistic Director
Connie Canaday Howard+*

Associate Artistic Director
Amelia Barrett+*

+ Member of Buffalo Theatre Ensemble ^ Member of United Scenic Artists, Local 829
* Member of Actors' Equity Association, the Union of Professional Actors and Stage Managers
‡Member of Stage Directors and Choreographers Society

There will be one 15-minute intermission

Please note: Adult themes and language.

Presented by arrangement with **Dramatists Play Service, Inc.**

The Outgoing Tide was originally produced by Northlight Theatre, Chicago, Illinois,
(BJ Jones, Artistic Director, Timothy J. Evans, Executive Director)

New York premiere produced by the Delaware Theatre company, (Bud Martin, Executive
Director) at 59E59 Theatres, November 2012.

The use of any recording device, either audio or video, and the taking of
photographs, either with or without a flash is strictly prohibited.
Please turn off all electronic devices, such as cell phones and watches.



Feb. 1 – Mar. 3, 2024 | Playhouse Theatre

CAST

Gunner Bryan Burke+*
Jack..... Nick DuFloth+
Peg..... Connie Canaday Howard+*

+ Member of Buffalo Theatre Ensemble

* Member of Actors' Equity Association, the Union of Professional Actors and Stage Managers

Place: The Concannon home on the Chesapeake

Time: Autumn

PRODUCTION STAFF

Stage Manager Amy Creuziger*
Assistant Stage Manager.....Riley Skalski
BTE Stage Management Scholar Carolyn Goldsmith◇
ASL Coordinator Marijo Fiacchino
ASL InterpretersMarijo Fiacchino, Daniel Englund, Alyssa Leahy
Technical DirectorCaitlyn Woods
Scene Shop ManagerSabrina Zeidler
Scene Shop Crew..... Gail Creighton, Sameer Datta, Keira Hernandez,
Mack Lechtenberg, Vinny Scanio, Emily Sheehan,
Harry Smith, Kaden Van Lerberghe
Costume Shop Manager.....Kimberly G. Morris
Assistant Costume Shop Manager Gretchen Woodley
Costume Shop Assistants Courtney Lilly, Eleanor Evans,
Lynn Borge, Meri Nushi
Wardrobe Meri Nushi
Infection Control Safety Managers Amelia Barrett*+,
Connie Canaday Howard*+,
Riley Skalski

Buffalo Theatre Ensemble Directing and Acting Shadows

This is an invited opportunity for select students who are working at the level of at least Acting II and/or Directing to shadow a theatre professional and gain meaningful insight into developing a character.

Acting Shadows Elise Lech, Vinny Scanio, Alexander Wisniewski

+ Member of Buffalo Theatre Ensemble

* Member of Actors' Equity Association, the Union of Professional Actors and Stage Managers

^ Member of United Scenic Artists, Local 829

◇ BTE Stage Management Scholarship Recipient

An outgoing tide lowers all boats.
–Ancient sea goers' maxim

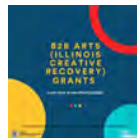
Gunner Concannon seems to have had it all: a solid fifty-year marriage to his teenage sweetheart Peg, a successful career forged in the competitive trucking business, a much-deserved retirement to his cherished seaside summer home. Only one thing mars this idyllic scene: a recently diagnosed case of Alzheimer's disease, which is quickly robbing him of his speech, his relationships, and his power to control his own destiny. His high tide is reversing, and its ebbing exposes both the cracks of his past and the terrors of the future.

First seen at Northlight Theatre in 2011, Bruce Graham's powerful drama is easily relatable to anyone who has confronted or observed the uneasy truths of mortality. But beyond that it is a finely-wrought portrait of a family whose current crisis reveals the exuberant highs and debilitating lows of fifty years of life. Laced with bracing humor and emotional confrontation, it captures the "outgoing tide" that we will all face—while showing us the grace, compassion, and abiding love that can ease the tragedy of that journey.

~SS

Acknowledgements

Buffalo Theatre Ensemble is partially supported and funded by generous grants from The DuPage Foundation, Benevity, Choose DuPage, The Norm Woodel Inspiration Fund, The Illinois Arts Council, Illinois Department of Commerce and Economic Opportunity (B2B Arts Grant), and, and a gift from Dr. Thomas R. Scott and the late Shirley Klein Scott of Glen Ellyn through the College of DuPage Foundation and the generous support of the College of DuPage Trustees.



CAST PROFILES



Bryan Burke+* (Gunner) is a member of Buffalo Theatre Ensemble. Burke's acting credits include the Jeff-recommended productions of *Andy Warhol's Tomato* (Mario "Bones" Bonino), *Clybourne Park* (Russ/Dan), *The Cake* (Tim), *Defiance* (Col. Littlefield), *The 39 Steps* (Richard Hannay) and *Good People* (Mike), as well as *Red, White and Blacklisted* (Christopher Trumbo), *Leading Ladies* (Leo), *Moon Over Buffalo* (George), *Faith Healer* (Frank), *Frankie and Johnny in the Clair de Lune* (Johnny), *Italian-American Reconciliation* (Huey), *Sleuth* (Andrew Wyke), *The Melville Boys* (Lee), *Noises Off* (Frederick Fellows/ Phillip Brent) and *Visiting Mr. Green*.

Other acting credits include *The Trip to Bountiful*, *The Lonesome West*, *Cat on a Hot Tin Roof*, *The Living*, *Picasso at the Lapin Agile*, *Look Homeward Angel*, *Warrior* and *Hamlet*. Burke also directed *Frozen*, *Shining City*, *Love Song*, *Stones in His Pockets*, *The Weir* and *Three Days of Rain* for BTE. College of DuPage directing credits include *Defying Gravity*, *Anton in Show Business*, *The Laramie Project*, and *The House of Ramon Iglesia*. Burke was also a founding member of Chicago's Cactus Theatre Company. Acting credits with The Cactus Theatre Company include *Golden Boy*, *Fishing*, *Paradise Lost* and *Waiting for Lefty*. He also directed their productions of *Hurly Burly* and *Valentine's Day*. Burke holds a BGS degree in Theatre from the University of Kansas. He is also a member of Actors' Equity Association.



Connie Canaday Howard+* (Peg, Managing Artistic Director) has directed numerous productions for BTE, with some favorites being *Time Stands Still*, *Rabbit Hole*, *Noises Off*, *Into the Woods* and *Dancing at Lughnasa*. She is also a member of BTE's acting ensemble, most recently playing Della in *The Cake*. Canaday Howard holds a MFA in Directing, and has worked regionally with Three Rivers Shakespeare Festival, City Theatre Company, Belvoir Terrace, Drama Workshop, Down River Dinner Theatre, Ingersoll Theatre, Charlie's Showplace, and tours of both theatre and dance, as well as helping to create and perform several improvisational shows. She serves on the Artistic Team of the Joseph Jefferson Committee, and, while a professor, also adjudicated for the Kennedy Center American College Theatre Festival

CAST PROFILES

(KCACTF). Canaday Howard recently retired as Chair/Professor of the Theatre Department at the College of DuPage, where she directed countless productions, including some favorites of *The Addams Family*, *Joe White and the Seven Dwarves*, *Taming of the Shrew* and *The Living*. Canaday Howard received COD's Outstanding Faculty in 2004, and served as the Illinois IAI co-chair of the Theatre committee for sixteen years, until recently.

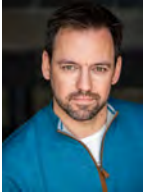


Nick DuFloth + (Jack) is a proud member of Buffalo Theatre Ensemble and is honored to be back. DuFloth was last seen onstage playing Jimmy in *Miracle On South Division Street*. Previously with BTE Nick was in *Defiance* (Gunney Sergeant), *Don't Dress For Dinner* (George), *Hamlet* (Bernardo) and understudied for *The 39 Steps* (Richard Hannay). DuFloth attended Columbia

College Chicago for acting and College of DuPage for acting where he was the recipient of the John Belushi Memorial Scholarship. He was a cofounder and ensemble member of Silent Theatre Company, working as an actor, writer, and director. With STC he performed and toured in their critically acclaimed production, *LULU* (Dr. Schön, Jack The Ripper), which received an award for Outstanding New Play at the New York Fringe Festival in 2006. With them he was last seen in *The Seven Secret Plays of Madame Caprice*. Nick has been onstage with T.U.T.A, Lifeline Theatre, Speaking Ring Theater, PROP THTR and many other Chicago companies. His on screen credits include the feature film *Dead of Winter* (Black), *Hitwoman*, a webisode series, the music video "Crossfire," and *Bitter Spirits*, a short film which recently debuted at Davis Theater. DuFloth is the lead singer, songwriter and a guitarist in the band, Berteau Trippers, which has performed all over the Midwest and will be performing soon, once again, at Montrose Saloon in Chicago.

Buffalo Theatre Ensemble's mission is to provide a forum in which artists, scholars, writers, students and community members explore new ideas and provocative issues through the production of quality theatre for the enjoyment of its audiences.

UNDERSTUDY PROFILES



Dustin Ayers (U.S. Jack) is grateful to be a part of this BTE production for his return to acting after 15 years. He is a graduate of the Conservatory Theatre program at Roosevelt University. He was last seen in seasons with Tinfish Theater, which included the roles of Roger in *The Balcony*, Leon in *Fools*, Hally in *Master Harold and the Boys*, and Yvan in *Art*. He would like to thank Connie Canaday Howard for this opportunity and his wife Jamie Ayers for her love and support.



Beth Bellantono (U.S. Peg), a theater enthusiast, attended the College of DuPage; she not only studied theater, but also earned recognition as a recipient of the prestigious John Belushi scholarship immersing herself in the world of theater many moons ago. Over the years, she has continued her passion by participating in plays at her local church and actively contributing to her community by assisting in school productions with her children when they were younger. Despite a 15-year hiatus from the stage, Bellantono's love for theater remains a vibrant part of her life and is completely honored to be part of Buffalo Theatre Ensemble.



Rich Kropp (U.S. Gunner) is delighted to be back at BTE, having understudied in the productions *Naperville* and *Holmes and Watson*. He's appeared in many plays in the Western suburbs, primarily at the Theatre of Western Springs and Village Theater Guild in Glen Ellyn, most recently in *Glengarry Glen Ross* at VTG and *Brighton Beach Memoirs* at TWS.

Special thanks to

Lewey Q's
Tap
Beer. Pizza. Wings. Sports

427 N Main Street, Glen Ellyn, IL 60137

PLAYWRIGHT PROFILE

Bruce Graham began his career as a playwright at the Philadelphia Festival Theatre for New Plays (PFT) in 1984 with *Burkie*. Graham became playwright-in-residence at PFT and later served two years as Artistic Director. He has received grants from the Pew Foundation, the Rockefeller Foundation, and was a past winner of the Princess Grace Foundation Statuette. He won the Rosenthal Prize for *Coyote on a Fence*, two Barrymore Awards for *Something Intangible* and *Any Given Monday*, and the Joseph Jefferson Award for *The Outgoing Tide*.

An ex-high school teacher, Graham still teaches play-writing and film courses at Drexel University. In the past, he has taught graduate level play-writing at University of Pennsylvania, Villanova University and Rutgers. He has conducted play-writing workshops in high schools and colleges across the country.

His textbook, *The Collaborative Playwright, A Practical Guide to Getting Your Play Written* (co-written with Michele Volansky) is published by Heinemann. bruce-graham.org/about/bio/

Graham recently returned to acting and has appeared as the Black Cat Husband in *Haunted Poe* (Brat Productions), Lenny in *Any Given Monday* (Act II), Richard in *Time Stands Still* (Delaware Theatre Company/Act II), Artie in *Hurlyburly* (New City Stage), Milt in *Laughter on the 23rd Floor*, Eddie in *Lost in Yonkers*, Ernie in *Rumors* (all for Bristol Riverside Theater), and Ben Hecht in *Moonlight and Magnolias* (Eagle Theater).



ARTISTIC DIRECTOR PROFILES

Connie Canaday Howard*+ (Managing Artistic Director) has directed numerous productions for BTE, with some favorites being *Time Stands Still*, *Rabbit Hole*, *Noises Off*, *Into the Woods* and *Dancing at Lughnasa*. She is also a member of BTE's acting ensemble, most recently playing Della in *The Cake*, and will be playing Peg in *The Outgoing Tide* this season. Canaday Howard holds a MFA in Directing, is a proud member of Actors' Equity Association, and has worked regionally with Three Rivers Shakespeare Festival, City Theatre Company, Belvoir Terrace, Drama Workshop, Down River Dinner Theatre, Ingersoll Theatre, Charlie's Showplace, and tours of both theatre and dance, as well as helping to create and perform several improvisational shows. She serves on the Artistic Team of the Joseph Jefferson Committee, and, while a professor, also adjudicated for the Kennedy Center American College Theatre Festival (KCACTF). Connie recently retired as Chair/Professor of the Theatre Department at the College of DuPage, where she directed countless productions, including some favorites of *The Addams Family*, *Joe White and the Seven Dwarves*, *Taming of the Shrew* and *The Living*. Canaday Howard received COD's Outstanding Faculty in 2004, and served as the Illinois IAI co-chair of the Theatre committee for sixteen years, until recently.

Amelia Barrett*+ (Associate Artistic Director) has acted, directed and coached dialect for many Buffalo Theatre Ensemble productions. She is a proud member of the acting ensemble and calls the theater her artistic home. As an actor, she has appeared with other local, regional, and international companies. She is Chair of the College of DuPage Theater Department, where she has directed well over 60 productions. She is a proud member of Actors' Equity Association as well as the Screen Actors Guild and the American Federation of Radio and Television Artists. She holds a Master of Fine Arts degree in acting from the University of Texas at Austin and a Graduate Certificate in Laban Movement Analysis from Columbia College Chicago.

ARTISTIC PROFILES

Aly Greaves Amidei+^ (Costume, Hair and Make-up Design) is a costume designer, playwright, and an Assistant Professor of Design at the University of Wisconsin-Madison. Recent BTE work includes *Miss Bennet: Christmas at Pemberley*, *Andy Warhol's Tomato*, *Season's Greetings*, *The Cake*, and *Improbable Fiction*. Her costume and makeup designs have also been featured at Lifeline Theatre, Strawdog Theatre Company, Michigan Shakespeare Festival, Steep Theatre, Magic Theatre of San Antonio, Lakeside Shakespeare, Irish Theater of Chicago, Dupage Opera, Stage Left, Artistic Home, House Theater of Chicago, Teatro Vista, Collaboraction, and Vitalist Theater. Previously, she worked for fifteen years as the costume and makeup coordinator for the College of DuPage theater and dance department and as a professor at UNC-Charlotte for seven years.

Garrett Bell (Lighting Design) Garrett Bell is a lighting designer based in Chicago. Recent Lighting Design credits with BTE include *Miss Bennet: Christmas at Pemberley*, *Andy Warhol's Tomato*, *Season's Greetings*, *Clybourne Park*, *Naperville*, and *The Cake*. Other recent credits include *Tecumseh!* with the Scioto Society, *Heisenberg* (lighting and scenic) with Griffin Theatre, *Sweat* with The Loop Players, *Disconnect* at Wheaton College, and *Future Perfect* with Bellissima Opera. More can be found at www.garrettbell.com.

Christopher Kriz +^ (Original Music and Sound Design) is a composer and sound designer based in Chicago, and an Ensemble Member with BTE. Previous BTE designs include *Miss Bennet: Christmas at Pemberley*, *Andy Warhol's Tomato*, *The 39 Steps* (Jeff nomination), *Season's Greetings*, *The Cake*, *Holmes and Watson*, and dozens of others. Chicago design credits include: Goodman Theatre, Steppenwolf, Chicago Shakespeare, Chicago Symphony Orchestra, Court Theatre, TimeLine Theatre, Remy Bumpo, Victory Gardens, Northlight Theatre, Shattered Globe, The Gift Theatre, and many others. Regional: Seattle Repertory Theatre, Kansas City Repertory Theatre, Indiana Repertory Theatre, Alabama Shakespeare Festival, Peninsula Players, American Stage Theatre, Crossroads Theatre, TheatreSquared, Montana Shakespeare, Nebraska Repertory Theatre, Michigan Shakespeare Festival, and others. A winner of five Joseph Jefferson Awards, Kriz is a proud member of United Scenic Artists 829. To hear more of his work, please visit christopherkriz.com

ARTISTIC PROFILES

Rachel Lambert (Properties Design) is so happy to be working with Buffalo Theatre Ensemble again. She is a freelance costume and props designer in Chicago whose previous credits include work with Goodman Theatre, The Second City, Northlight Theatre, Remy Bumppo Theatre, First Folio, The Gift, Eclipse Theatre, Redtwist, DePaul School of Music, Greenhouse Theatre, BoHo Theatre, Underscore Theatre, Signal Ensemble, and American Blues Theatre. She has been nominated for five Jeff awards. Regionally she has designed for Peninsula Players and the Texas Shakespeare Festival.

Jacqueline^ & Richard Penrod^ (Scenic Design) are very happy to be working with The Buffalo Theatre Ensemble on this production of *The Outgoing Tide*. Recent productions include *Big River* for the Mercury Theater. Their award winning design work has been seen locally and regionally. Some favorite productions include: *Miss Bennett: Christmas at Pemberley* at Northlight Theatre, *Frida: a Self Portrait* at Cincinnati Playhouse in the Park, Portland Center Stage and Kansas City Rep. *Around the World in Eighty Days* for Lookingglass Theatre, *Eclipsed* for Pegasus Theatre, *Richard III* for The Gift Theater produced at Steppenwolf Theatre; *Stick Fly* for Windy City Playhouse; *Welcome Home Jenny Sutter* for Next Theatre Company; *Pygmalion*, and *Love and Information*, for Remy Bumppo Theatre Company. They are members of United Scenic Artists local 829. Find out more at www.penroddesign.com

Steve Scott‡ (Director) returns for his tenth production at BTE, where he most recently directed *Andy Warhol's Tomato*. For over 30 years he served as Producer at the Goodman Theatre, and is currently an artistic associate and board member at the Goodman; his directing credits there include *The Santaland Diaries*; *Ah, Wilderness*; *Vanya and Sonia and Masha and Spike*, *Horton Foote's Blind Date*; the world premiere of Tom Mula's *Jacob Marley's Christmas Carol*; and six editions of *A Christmas Carol*. Scott has directed at a wide variety of professional companies in Chicago; recent productions include *Mothers and Sons* at Northlight, *Richard III* at Promethean, *King Lear* and *The Humans* at Redtwist (where he is a company member), *Why Torture is Wrong...and the People Who Love Them* at Eclipse Theatre, *Next to Normal* at the Dunes Summer Theatre (where he is artistic director), *Cat on a Hot Tin*

ARTISTIC PROFILES

Roof at the Skokie Theatre, and *Summer and Smoke* and *Stage Door* at the Theatre Conservatory of the College of Performing Arts at Roosevelt University, where he has been on the faculty for over two decades. He has also taught at Columbia College Chicago, Loyola University of Chicago, Northwestern University, Northern Illinois University, and the Latin School of Chicago; and serves on the board of Season of Concern. For his work as a director, Scott has received six Jeff nominations, an After Dark Award, and numerous *Broadway World* nominations; he received the 2017 Special Jeff Award for his contributions to the Chicago theater community and the 2018 Lifetime Achievement Award from the League of Chicago Theatres.

+ Member of Buffalo Theatre Ensemble

* Member of Actors' Equity Association, the Union of Professional Actors and Stage Managers

^ Member of United Scenic Artists, Local 829

◇ BTE Stage Management Scholarship Recipient

‡ Member of Stage Directors and Choreographers Society

Dining Partners

Eat, drink & enjoy -
MAC dining partners

For all your pre-show meals and post-show bites, we are thrilled to be partnering with these neighborhood restaurants. Our dining partners offer MAC patrons exclusive discounts and special offers. All MAC ticket orders receive coupons to these local favorite restaurants!

a toda madre

ADELLE'S
FINE AMERICAN FARE

GLEN PRAIRIE
LOCAL FLAVOR
FINE FOOD & DRINK

Santa Fe
Mexican Restaurant

RESERVE
22
RESTAURANT BAR EVENTS

NOBEL HOUSE

STAGE MANAGER PROFILES

Amy Creuziger*(Stage Manager) is happy to be working with Buffalo Theatre Ensemble on this production of *The Outgoing Tide*. She spent her early career in Minneapolis/St. Paul where her stage management credits include productions with The Ordway, Chanhassen Dinner Theatres, Playwrights' Center, History Theatre, Frank Theater, Troupe America, and Nautilus Music-Theater. In Illinois, Amy has regularly stage managed for New American Theater, Artists' Ensemble Theater, and First Folio Theatre. She currently directs the theater productions at Rochelle Township High School where she has served as the Theater Arts Director since 2010. Creuziger has been a proud member of Actors' Equity Association since 1999.

Riley Skalski (Assistant Stage Manager) is overjoyed to be a part of Buffalo Theater Ensemble's season! Previous BTE credits include student shadow for *Time Stands Still*, a dresser for *Improbable Fiction*, and the Assistant Stage Manager and Infection Control Safety Manager for *Miss Bennet: Christmas at Pemberley*. Recent film credits include the short film *The Static Syndrome*. Recent theater credits include *Curse of the Starving Class*, *The Diary of Anne Frank*, *Pippin*, *Girls Like That*, and *A Christmas Carol* all performed at College of DuPage. She was a recipient of the John Belushi/Second City Stage Management Scholarship in 2018 and stage-managed College of DuPage's production of *The Foreigner*. After taking a couple of years off, Skalski is ecstatic to continue studying theater at College of DuPage as she is pursuing a career in theater and teaching.

Carolyn Goldsmith ♦ (BTE Assistant Stage Management Scholar) is thrilled to be a part of Buffalo Theatre Ensemble's *The Outgoing Tide*. She previously worked for BTE in their production of *Andy Warhol's Tomato*, as a student ASM, and is very excited to be back. Her previous College of DuPage Theatre credits include the productions *Badger*; *A Christmas Carol*; *Hare Today, Tortoise Tomorrow*; and *Twelfth Night*. She is the recipient of the John Belushi stage management scholarship, and will be stage managing for College Theatre's production of *Arsenic and Old Lace* this coming spring. She is currently a student at College of DuPage, pursuing a career in film and theatre.

+ Member of Buffalo Theatre Ensemble

* Member of Actors' Equity Association, the Union of Professional Actors and Stage Managers

^ Member of United Scenic Artists, Local 829

♦ BTE Stage Management Scholarship Recipient

The MAC offers all of this for you,
but we can't do it without you!



**YOUR GIFT HELPS PROVIDE CULTURAL VITALITY
THAT ENRICHES AND ENTERTAINS!**



GIVE TODAY! TO SUPPORT THE MAC,
visit us at foundation.cod.edu or call (630) 942-3088



**College of DuPage
FOUNDATION**

(630) 942-3088 | foundation@codfound.org | foundation.cod.edu



Buffalo Theatre Ensemble (“BTE”) is a 501(c)(3) not for profit, professional theatre company in residence at the McAninch Arts Center (“MAC”) on the campus of College of DuPage.

Ticket revenue only covers a portion of Buffalo Theatre Ensemble’s operating expenses. The rest must be raised through contributions, the majority of which comes in the form of gifts from individuals like you.

It’s because of our close circle of friends that BTE is able to return and explore new ideas and provocative issues through the production of professional, high quality theater for the enjoyment of its audiences.

The resident ensemble brings professional theater to DuPage County and at the same time enhances the training of students in Theater at College of DuPage, providing opportunities for students to develop their talents alongside working theater artists.

We invite you to become a part of this family of supporters by joining the **Friends of Buffalo Theatre Ensemble**. Make checks payable to Buffalo Theatre Ensemble [BTE, PO Box 2608, Glen Ellyn, IL 60138] or donate through PayPal <https://www.paypal.com/us/fundraiser/charity/2042520> or go to btechicago.com and select donate.

With a financial commitment of \$500 or more, donors help bring our stories to life by “sponsoring” an Ensemble member for the season. Sponsorship includes:

- Recognition in show program for entire season
- Two additional complimentary tickets to the show of donor’s choice
- One-on-one visit with “your artist” (at a mutually agreed upon location such as the theatre, a coffee shop, or via Zoom)

Rising Star.....\$50-\$249
 Director’s Circle.....\$250-\$499
 Imaginer.....\$500-\$999

Dream Maker.....\$1000-\$2999
 Benefactor.....\$3000+

*Buffalo Theatre Ensemble is a designated 501(c)(3) not-for-profit organization.
 Your donation may be tax deductible to the extent permitted by law.
 Please check with your tax advisor.*

**BTE's 23-24 Season is dedicated to the memory of our dear friends
Loretta Hauser and Michael J. McCoy, with deep appreciation.**

**In Memory of
Michael J. McCoy**

Connie Canaday Howard
Alisa Jordheim
Deborah Kolek
Thomas Manak
Martha McCoy
Jane Oldfield
Colleen Trinko
Scott Wetle
Erin Wymore &
Jeff and Julie Wymore

**In Memory of
Loretta Hauser**

Eugene L. Benner
Connie Canaday Howard
Erin Diener-Matul
Lou Ann Kaletka Gaya
Lisa Hada
Patricia Miller

Thomas and Robin
Reeves
Gertrude Rigg
Virginia Schweinberg
and Family
Nancy and Kevin Taylor
Lynn and Gray Wilkens

For 37 years, **Buffalo Theatre Ensemble (BTE)** has played a major role in the cultural community of College of DuPage and the surrounding area, through the marriage of committed permanent ensemble members, fine Chicagoland artists, and great theatrical works. We gratefully acknowledge the donors who have made it possible to return for our 37th season.

This list of donors reflects contributions made from **August 2018 through January 2024**. While we carefully prepared this listing, we recognize that errors may occur. Please accept our apology if you are not properly represented on this list and contact BTE at ab@btechicago.com so we may correct our records.

Benefactor (\$3000 and above)

Anonymous
Robert Bailey
Katherine Balek
Connie Canaday Howard
Cleve E. Carney Fund
Peggy Connolly
DuPage Forever Fund
DuPage Foundation
Jean Hawkins
Art Hirsch
Illinois Arts Council
Joseph and Beth Kindlon Fund
Maggie & Mike McCoy
Network for Good
Carolyn & Eric Oesterle
Karen Owen
John K. Rutledge & Betty Joseph
Thomas Scott
Scott Vessely
Kathy Wessel

Donald Westlake
Norman Woodel

Dream Maker (\$1000–\$2999)

Mary Bacco & Renato Bacci Jr.
Amelia Barrett
Deborah Borge
Michael Boyna
Sharon Brockmeier
John and Pamela Dalby
Kathleen Drennan
Dr. James & Judy Dunlap
Friends through Facebook
Phil & Amy Gelber
Jon & Ruth Good
Charles & Phyllis Goodman
George and Mary Hall
Richard Jarman
Charlene Kornoski-Duvall
Paula Chuchro and James Lenihan
Jessica Lippman

Harold & Karyl McAninch
Mrs. Joseph Morrissey
Tom & Karen Pulver
William Raymond
Sandra Sansone Brennan
Nathan Schuette
Kristin & Peter Shulman
Maureen and Terrence Taylor
Kelli Walker
Bonnie M. Wheaton
Robert Wunderlich
Mary Ann & Walt Zlotow

Imaginer (\$500–\$999)

Brian Allendorfer
Lynette Arendt
Bob and Betty Becker
Mary Sue Brown
John E. & Suzanne Buntrock
Robert and Nancy Casey
Glenn Domovic
James and Marie Drasal

FRIENDS OF BUFFALO THEATRE ENSEMBLE

Donald and Catherine
Fischer
Russell and Judy Flores
Debra Fulks
Glen Ellyn Chamber of
Commerce
Ida Hagman
Rebekah & Rodney Harris
Bob & Sue Hartman
Nancy Headen
Cynthia Ann & Andrew
Johnson
Richard & Mary Kuhn
Larry Larson
Robert & Jean Lindsey
Kathleen McCullough
John & Rita Meier
David J. and Donna M.
Millhouse
Jim & Lorraine Paulissen
Edward & Bernadine Pillar
Pamela Pipkin
William Podgorski
Merrill & Janet Rajek
Randy Johnson & Lisa
Savegnago
Shanker Valleau Wealth
Advisors
James & Linda Smedinghoff
Gloria P. & Kennan R.
Sullivan
Haruo Kurokawa and Hal
Temple
Marcy and David Uphoff
Erin & Jeff and Julie
Wymore

Director's Circle (\$250– \$499)

Joy & Bob Barrell
Marcia & Arthur Burke
Robert Cappetta
Dr. and Mrs. Brian W.
Caputo
Chipotle Community Roots
Robin Dye
Fran Kravitz and Daniel
Edelman
John & Emily Herndon
Jan T. and Kathryn
Johansson

John J. Bryant Fund
Dennis Johnson
Barbara Kamm
Linda Kulikowski
Paul & Eileen Lefort
John Mategrano
Michael McKeon
Carol & Michael Moon
John M. Mulherin
Michael J. and Melissa F.
Nachman
Gwen O'Loughlin
Jean R. and Joanne Oliphant
Barb & Doug Rundell
Alfred & Lorraine Schuller
Patricia & Richard Schwarze
Arnold R. & Susan M.
Stenvog
Nancy Svoboda
Linda & Barry Tusin
Larry Ward
Rich & Kathy Wilders
Jo Anne Zipperer
Peggy Aldworth
Michael Church
Patrice Conaway
Gary Harper
Lou Ann Kaletka Gayan
Martha McCoy
Sarah & Roger Poeppel
Marlene & Robert
Rosecrans
Tina Rudins
Kathy Schleicher
Patricia Spence
John L. Ladle
Steve Scott

Rising Star (\$50 to \$249)

Anne Ahlert
Barbara and Lowell
Anderson
Ron & Judith Anderson
Christine Aument
Susan Bell
Eugene Benner
Blackbaud Giving Fund
Peter Bostock
James Boves
Julie Breen
Martha & Ray Bright

Joanne Brown
Patrick and Joanne Callahan
Bonnie Campbell
Abbey Canaday Howard
Maura Canzano
Larry & Karen Christensen
Ray & Melissa Cliff
Shiela Cosco
Lisa Dawn Curran
Barb Danvir Hepfer
Erin Diener Matull
Julia Dilberti
Gary Dobson
Victoria Donnelly
Ted Donner
LuEllen Doty
Andrea Duffy
Robert Dulski
Susie Dunne Smith
Marla Eglowstein
Gary Ernst
Sally & William Fairbank
Angela and James Frank
Ruta Freimanis
Barbara Fried
Jackie Friedman
Bonnie L. and Jeffrey L.
Gahriss
Karen Gaydos
Robin George
Chris Gerrib
Fran Gilles
Peter Glassman
Dawn Goldhirsh
John & Lisa Gorak
Kathleen Graffam
Lisa Hada
James and Gail Hannon
Cassy Harlo Schutz
Paul & Floy Haschke
Edward M & Cindy L
Hegarty
James & Ann Helt
Diane Hicks
Ron & Valerie Hollaender
John C and Stephanie B
Iglehart
Carla Inwood
Dennis Johnson
Mary Johnson
Bernard Jokiel

FRIENDS OF BUFFALO THEATRE ENSEMBLE

Charles & Margaret Jonah
 Alisa Jordheim
 Jean Joslyn
 Jill Kainu
 David Kee
 Kay & Rick Kehoe
 Thomas Kelly
 Virginia and Charles
 Klingporn
 Deborah Kolek
 Fran Kravitz
 Mary Krska
 Sally & Martin Kuttesch
 Eileen Landau
 Cynthia Laughlin
 Ida Lee
 Virginia Lennon
 Esther Loth
 Holly Malloy
 Tom Manak
 Corrine Marrinan Tripp
 Brandee Martin-Horton
 Walter Martineau
 Rich Matheson
 David and Carolyn May
 Jacqueline McGrath
 Steven Merkel
 Tom Mikrut
 Patricia Miller
 James Milobowski
 Thomas Montgomery Fate
 Jane Moore
 Patricia Motto
 Frank Mraz
 Donald & Mary Ellen
 Newsom
 Kevin O'Brien
 Kelly O'Hanlon
 Oberweiss
 Jane Oldfield
 Kenneth Orenic
 Jeff Ownby

Dianne Paulini
 Dean & Lisa Payton
 Michael Pesola
 Mark Pfefferman
 Judy Pitts
 Terra Stetz & Rita Potter
 Cynthia & Thomas Power
 Joe Pundzak
 Pat Read
 Mary Ellen Reedy
 Carol & Alfred Reiman
 Gertrude Rigg
 Gail Robinson
 Bruce Rodman
 Judith Ronaldson
 Daniel F. and Barbara Roos
 Susan Ross
 Gus & Georgia Rousonelos
 Jim Ruffing
 Mark Sand
 Kathleen Schneider
 Mary Kay Schultz
 Virginia Schweinberg and
 Family
 Paul Seidlitz
 Wei Shissler
 Donna Jean Simon
 Iona Simon
 Michael Sitrick
 M.D. & Laura Skeet
 Jean Spitzer
 Susan Spooner
 Stephen Squier
 Donald Stading
 Louis & Marilyn Steenwyk
 James Stover
 Barbara & Thomas Suhrbur
 Helen Szymanski
 Kathleen Talenco
 Nancy and Kevin Taylor
 Dr. and Mrs. Anthony Taylor
 Jean Tello

George Tenne
 Mary Trecek
 Paul & Colleen Trinko
 Joseph & Mary Beth Turek
 Barbara Urick
 Alan L. & Linda K. Varney
 James & Carolyn Vondran
 Roy & Janice Wahnert
 Vince & Gloria Walsh-Rock
 James Weichel
 Werner Weiss
 Scott Wetle
 Bobbi & John Wheatley
 Mary Wiesen
 Tod D. Willman
 William Womack

Business Partners
 Adelle's
 Cabernet and Co
 Club Pilates Glen Ellyn
 Emergence See
 Photography
 The Foxtail
 Fuschia Glen Ellen
 The MAC
 Gia Mia
 The Gift Theatre
 Gindo's Spice of Life
 Health Track
 Hot Worx Wheaton
 Lewey Q's Tap
 Maise and Mash
 Mindful Movements Pilates
 & Yoga
 Oil Lamp Theatre
 Paramount Theatre
 Peet's Coffee Downers
 Grove
 Yoga Six Downers Grove
 Remy Bumpo Theatre
 Silver Fox Travel
 Skeleton Key
 Two Hound Red



BTE BOARD OF DIRECTORS

Brandee Martin-Horton (President), Ted Donner (Vice President), Laura Leonardo Ownby (Secretary), Anthony Tumea (Treasurer), Margaret Aldworth, Robert Jordan Bailey, Amelia Barrett, Connie Canaday Howard, Elyse Kennard

Legal Counsel: Derek Johnson

Members Emeriti: Robert Cappetta, Peggy Connolly, Rebecca Cox, Lisa Dawn, Ida Hagman, Diane Hicks, Richard Jarman, Michael J. McCoy, Joan Morrissey, Kurt Naebig, Carolyn Oesterle, John K. Rutledge, Sandra Sansone Brennan, Colleen Trinko, Kelli Walker, Kathy Wessel, Bonnie Wheaton, Richard Wilders, Norm Woodel, Mary Ann Zlotow

STUDENT VOLUNTEERS

Michael Bellino	Anita Constabile	Dimitris Michelis	Brandon Torres
Brandon Michael Bunn	Nathan Cozzi	Kailey Nelson	Marissa Warner
Caroline Broderick	Elmeka Elme	Ryan Sinclair	Brendan Matthew Weaver
Benjamin Cardinal	Brendan Flaherty	Gina Robertelli	Owen Woodard
Ashley Chavez	Trevor Frueh	Emily Sheehan	
Cassie Collins	Ryan Gentile	Rachel Strolle	
Jack Columbo	Julie Good	Tess Sundstrom	
	Kyle Krisch	Aaron Taylor	

VOLUNTEERS

Peggy Aldworth	Christopher Corrigan	Brett Mathieson	Lynda Pratscher
Quinn Bayola	Julia DiLiberti	Maggie McCoy	Erin Lynn Ransford
Debbie Borge	Andrea Ficarelli	Caroline McGowan	Erica Sandvig
Bill Bulger	The Late Joan Frank	Isola Metz	Debbye Simpson
Benjamin Caracello	Ken Frank	Barb Murphy	Nancy Svoboda
Gayatri Choudhary	Rex Howard	Elaine Patrick	Donald Westlake
Peggy Connolly	Paul LeFort	Tony Payne	Mary Ann Zlotow
		Pam Pipkin	



btechicago.com



facebook.com/BuffaloTheatreEnsemble



[BTEattheMAC](https://twitter.com/BTEattheMAC)

HOUSE NOTES

- Cameras and recording devices are not allowed in the theater and are prohibited by our contracts with the artists.
- Smoking is not permitted in the theater or on campus.
- For your comfort and security, all backpacks and large bags must be checked.
- Please turn off all cell phones and any other alarms while in the theater.
- Emergency phone number at College of DuPage Police Department for after-hour calls is (630) 942-2000.
- Latecomers seated at discretion of the House Manager.
- Groups of 10 or more may contact (630) 942-3026 or grouptix@cod.edu to arrange for group discounts.
- If you notice a spill in the theater, please notify an usher.
- McAninch Arts Center volunteers are people who assist the house staff in areas of ticket taking, ushering and general management during performances. To get involved, call (630) 942-3705.
- **For Americans with Disabilities Act** accommodations, call (630) 942-2141 (voice) or (630) 858-9692 (TDD).
- **Infrared Assistive Listening Devices:** For audience members who desire audio amplification of performances, headsets with individual volume controls are now available. You may check out the headsets at the Box Office with a driver's license. *Underwritten by a generous gift from The Knowles Foundation.*

MAC STAFF LISTING

MAC Administrative Staff

Director of the McAninch Arts Center.....	Diana Martinez
Senior Business Manager.....	Ellen McGowan
Business Manager.....	Cassi Fanelli
Project Manager.....	Kari Schoettle
Business Office Assistant.....	Brianna Garcia
Curator, Cleve Carney Museum of Art.....	Justin Witte
Assistant Curator.....	Julia Walker
Marketing and Patrons Services Coordinator.....	Janey Sarther
Graphic Designer.....	Wendy Melgar
Director of Development for Cultural Arts.....	Janie Oldfield
Education and Community Engagement Coordinator.....	Mandy Rakow
Student Clerical Assistant.....	Blake Lietz

MAC Box Office and Front of House Staff

Box Office Manager.....	Julie Elges
Assistant Box Office Supervisors.....	Jim Gosling, Elise Wash
Box Office Assistants.....	Patrick Garon, Tatia Hegrans
Patron Services Manager.....	Tom Murray
Assistant Patron Services Supervisor.....	Deborah Kolek
House Manager/Volunteer Coordinator.....	Rob Nardini

MAC Resident Professional Ensembles

Buffalo Theatre Ensemble, Artistic Director.....	Connie Canaday Howard
Buffalo Theatre Ensemble, Associate Artistic Director.....	Amelia Barrett
Buffalo Theatre Ensemble, Business Manager.....	Bryan Burke
New Philharmonic, Music Director and Conductor.....	Kirk Muspratt
New Philharmonic, Associate Conductor and Librarian.....	Benjamin Nadel
New Philharmonic General Manager.....	Paula Cebula
New Philharmonic Personnel Manager.....	Karen Dickelman

MAC Design and Technical Staff

Technical Production/Lighting/Sound Coordinator.....	Richard Arnold, Jr.
Technical Theater Assistant Coordinator.....	Sabrina Zeidler
Costume and Make-up Design Coordinator.....	Kimberly G. Morris
Assistant Costume Coordinator and Stitcher.....	Gretchen Woodley
Production Manager.....	Joe Hopper
Sound and Lighting Specialist.....	Ben Johnson
Lighting Production Specialist.....	Elias Morales
Audio Production Specialist.....	Fisher Parsons
Events Production Specialist/Tech. Director – BTE.....	Caitlyn Woods
Stage Hands.....	Bobby Bryan, Zak Zubka