

INTO THE EARTH WITH YOU





Dear Friends of BTE,

Welcome to Buffalo Theatre Ensemble’s 37th Anniversary Season! We believe deeply in the common, immediate and ephemeral, shared experience of theatre, and are so happy you are joining us – some of you continuing your commitment to theatre and to BTE in the coming year, and some of you joining our ‘family’ for the

first time. We’re excited to share with you these three productions, told from very different perspectives, which are engaging, at times humorous and though-provoking. We so appreciate you, our subscribers, who are our extended family – and we look forward to the coming season with much excitement and joy.

We will continue to place at the highest priority the safety of both our audiences and artists. Please check AtTheMAC.org and BTEChicago.com for up-to-date safety information.

Sincerely,

The Ensemble

Aly Greaves Amidei^, Robert Jordan Bailey+, Amelia Barrett+ (Associate Artistic Director), Bryan Burke+ (Business Manager), Robyn Coffin, Rebecca Cox, Lisa Dawn, Nick DuFloth, Jon Gantt, Loretta Hauser (in memorial), Connie Canaday Howard+ (Managing Artistic Director), Christopher Kriz^, Michael W. Moon, Kurt Naebig+, Laura Leonardo Ownby, Galen G. Ramsey+, William “Sandy” Smillie, Kelli Walker and Norm Woodel. For more information about BTE, visit btechicago.com.

BTE Board of Directors:

Margaret Aldworth, Robert Jordan Bailey, Amelia Barrett, Connie Canaday Howard, Ted Donner (Vice President), Elyse Kennard, Brandee Martin-Horton (President), Laura Leonardo Ownby (Secretary), Anthony Tumea (Treasurer).

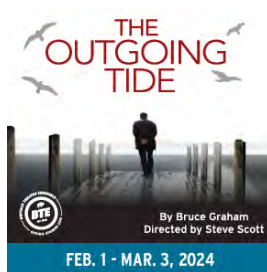
Legal Counsel: Derek Johnson

Members Emeriti: Robert Cappetta, Peggy Connolly, Rebecca Cox, Lisa Dawn, Ida Hagman, Diane Hicks, Richard Jarman, Michael J. McCoy, Joan Morrissey, Kurt Naebig, Carolyn Oesterle, John K. Rutledge, Sandra Sansone Brennan, Colleen Trinko, Kelli Walker, Kathy Wessel, Bonnie Wheaton, Richard Wilders, Norm Woodel, Mary Ann Zlotow

+ Member of Actors’ Equity Association, the Union of Professional Actors and Stage Managers

^ Member of United Scenic Artists, Local 829

This 2023/2024 Season is dedicated to the memory and friendship of Loretta Hauser and Michael J. McCoy.



Buffalo Theatre Ensemble Presents

Into the Earth With You

by **Brian Watkins**

Director

Kurt Naebig+*

Original Music & Sound Design

Christopher Kriz+^

Scenic Design

Sarah Lewis

Costume, Hair, Makeup &

Properties Design

Kimberly G. Morris

Lighting Design

Garrett Bell

Violence Director

Neil Massey‡

Managing Artistic Director

Connie Canaday Howard+*

Associate Artistic Director

Amelia Barrett+*

+ Member of Buffalo Theatre Ensemble ^ Member of United Scenic Artists, Local 829

* Member of Actors' Equity Association, the Union of Professional Actors and Stage Managers

‡Member of Stage Directors and Choreographers Society

There will be one 15-minute intermission

Please note: Adult themes and language.

Presented by arrangement with **CAA for Brian Watkins**

The use of any recording device, either audio or video, and the taking of photographs, either with or without a flash is strictly prohibited. Please turn off all electronic devices, such as cell phones and watches.



May 2 – June 2, 2024 | Playhouse Theatre

CAST

Granddad Norm Woodel+
May Carver Lisa Dawn+
Jim Elbert Robert Jordan Bailey+*
Carly Carver Laura Leonardo Ownby+
Quinn Carver Kelli Walker+

+ Member of Buffalo Theatre Ensemble

* Member of Actors' Equity Association, the Union of Professional Actors and Stage Managers

Place: A quaint cabin home, far outside a small town, somewhere high in the mountains.

Time: September

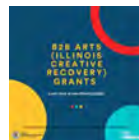
Act One: 1999

Act Two: Seven years later.

Act Three: Seven years after that.

Acknowledgements

Buffalo Theatre Ensemble is partially supported and funded by generous grants from B2B Arts: Arts Illinois Alliance Resources, The DuPage Foundation, Benevity, Choose DuPage, The Norm Woodel Inspiration Fund, The Illinois Arts Council, and a gift from Dr. Thomas R. Scott and the late Shirley Klein Scott of Glen Ellyn through the College of DuPage Foundation and the generous support of the College of DuPage Trustees.



PRODUCTION STAFF

Stage Manager	Jennifer J. Thusing*
Assistant Stage Manager.....	Riley Skalski
BTE Stage Management Scholar	Daniela Luna∅
ASL Coordinator	Marijo Fiacchino
ASL Interpreters	Dan Englund, Laura Kostomiris, Katherine Czerwinski
Technical Director	Caitlyn Woods
Scene Shop Manager	Sabrina Zeidler
Scene Shop Crew ...	Gail Creighton, Sameer Datta, MeiXi DiBernardo, Keira Hernandez, Mack Lechtenberg, Vinny Scanio, Emily Sheehan, Harry Smith, Jillian Todd, Kaden Van Lerberghe
Student Scenic Artist.....	Gail Creighton
Costume Shop Manager.....	Kimberly G. Morris
Assistant Costume Shop Manager	Gretchen Woodley
Costume Shop Assistants	Courtney Lilly, Eleanor Evans, Lynn Borge, Meri Nushi
Scenic Charge Artists.....	Livian Kennedy, Abby West
Wardrobe	Meri Nushi
Infection Control Safety Managers	Amelia Barrett*+, Connie Canaday Howard*+, Riley Skalski

Buffalo Theatre Ensemble Directing and Acting Shadows

This is an invited opportunity for select students who are working at the level of at least Acting II and/or Directing to shadow a theater professional and gain meaningful insight into developing a character.

Acting Shadows..... Morgan Erickson, Carolyn Goldsmith,
Jimmy Knapp, Jackie Schiro

+Member of Buffalo Theatre Ensemble

* Member of Actors' Equity Association, the Union of Professional Actors and Stage Managers

^ Member of United Scenic Artists, Local 829

‡Society of American Fight Directors

∅Buffalo Theatre Ensemble Stage Management Scholarship Recipient

DIRECTOR'S NOTE

In 2017, I attended a reunion at The Juilliard School. While I was there some of the writers in the playwriting program did readings of short scenes from their shows. One scene had three women playing sisters. It was funny, moved fast, had heart, was mysterious, and the scene really stuck with me. A few weeks later I called the school and asked if I could read a copy of the entire play. It was *Into The Earth With You* by Brian Watkins. I was immediately taken by it... The mystery, the conflict, the comedy, the myriad surprises and the difficult but truthful relationship these three sisters shared, made it impossible for me to put it down.

Fast-forward a couple years and one pandemic, and here we are. I'm so excited to bring together such a talented group of actors and designers to show you BTE's world premiere of this thrilling play. I hope you love it as much as I do.

~KN

CAST PROFILES

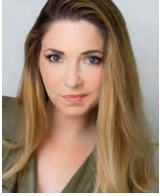


Robert Jordan Bailey +*(Jim Elbert) is thrilled to be part of this world premiere production. Bailey was last seen as Bernard in *Seasons Greetings*. As a member of BTE, Bailey has appeared in *Defiance* (Chaplain White), *Outside Mullingar* (Anthony), *The Ding Dong*, *Improbable Fiction*, *Don't Dress for Dinner*, *Glass*

Menagerie (Jim), *Homeward Bound*, *Hamlet* (Horatio), *Bedroom Farce*, *Angels in America* (Louis), *Someone Who'll Watch Over Me*, *70 Scenes of Halloween*, *Blithe Spirit* (Charles), *Fuddy Meers* (Richard), *Art* (Marc), *Sylvia* (Greg), *Three Days of Rain* (Walker/Ned), *Baltimore Waltz*, *Noises Off* (Gary), *The Woman in Black*, *Moonlight and Magnolias* (Selznick), *Private Lives* (Elyot), *Shining City* (Ian), *Drawer Boy* (Angus), and *Leading Ladies*). Some of Bailey's other favorite credits include: *A Moon for the Misbegotten* (Tyrone), *Les Liaisons Dangereuses* (Valmont) and *Lips Together, Teeth Apart* (Sam) with Circle Theatre; *Our Town* (George), *Equus* (Dysart) and *Rope* (Rupert) with Bailiwick Repertory; *Relationship Hell* with Strawdog; *Shadowlands* (C.S. Lewis) with Borealis; and the premiere of Jamie Pachino's *Children of Cain* with the Playwrights Center. Bailey also spent a year at the professional regional theatre Players' Theatre in Columbus, Ohio, where he played Peter in *Prelude to*

CAST PROFILES

a Kiss and Young Skrugge in the musical *A Country Christmas Carol*. Bailey also spent two summers in stock with Southern Appalachian Repertory where he played Cliff in *Cabaret* and originated the roles of Lonny in *The Battle of Shallowford* and E.J. Fikes in *Echo 4 mi*.



Lisa Dawn+ (May Carver) is an EMC and proud to be a member of Buffalo Theatre Ensemble, with whom she was nominated for an Equity Jeff Award for her performance in *The Cake* (Jen). Other BTE credits: *Clybourne Park*, *Naperville*, *Time Stands Still*, *Shining City*, *Blithe Spirit*, and *The Ding Dong*. Over quarantine, she

was seen at the drive-in and streaming online in Oil Lamp Theatre's one-woman show *Bad Dates* (Haley) and returned to the OLT live stage in their production of *The Revolutionists* (Marie Antoinette). Dawn performed in Los Angeles as Jess in Ken Kaden's adaptation of Nick Hornby's novel, *A Long Way Down*, as a benefit for Suicide Awareness and she also travels all over Illinois as an instructor/improv actress with Crisis Intervention Training, where the focus is on training officers to advocate for those struggling with mental illness. Other favorite credits: *Communicating Doors* (Poopay), *Much Ado About Nothing* (Beatrice), *A Midsummer Night's Dream* (Puck), *The Elephant Man* (Mrs. Kendal), *YAGMCB* (Snoopy), *The 39 Steps* (Annabella/Pamela/Margaret). Favorite Directing credits: *Into the Breeches*, *Wit*, *Steel Magnolias*, and *The Boys Next Door*.



Laura Leonardo Ownby+ (Carly Carver) was previously seen in BTE's productions of *Season's Greetings* (Phyllis), *Defiance* (Margaret Littlefield), *Improbable Fiction* (Jess), and *Don't Dress for Dinner* (Suzanne). Currently, Leonardo Ownby serves on BTE's Board of Directors.

Locally, some of her favorite acting credits include Rosemary in *Outside Mullingar** (Citadel Theatre, Jeff Nomination, Best Ensemble, midsized), Masha in *Sonia and Vanya and Masha and Spike* (Dunes Summer Theatre), Alma Winemiller in *Summer and Smoke* (TWS), Karen Brown in *Unnecessary Farce* (Jedlicka Performing Arts Center) and Belinda Blair in *Noises Off* (TATC). She has also served as properties designer, most notably for *Dinner with Friends; A Life in the Theatre*; and *Love, Loss, and What I Wore*.

CAST PROFILES

Leonardo Ownby taught high school English, Speech, and Theatre from 1991 to 2001. She now combines acting skills with teaching skills as a standardized patient for local medical schools as well as Crisis Intervention Team (CIT) Training for the DuPage Sheriff's Department. Long ago, Leonardo Ownby was a theatre student of the College of DuPage. She is a graduate of the University of Illinois, Urbana-Champaign.



Kelli Walker+ (Quinn Carver) has appeared in *Clybourne Park*, *Naperville*, *Miracle on South Division Street*, *The Ding Dong*, *Outside Mullingar*, *Good People*, *The Underpants*, *Frozen*, and *Love Song* (Buffalo Theatre Ensemble, ensemble member); *Native Gardens* (Williams Street Repertory, U/S, performed); *Into the Breeches* (iambe theatre ensemble); *The Humans* (Redtwist Theatre); *A Doll's House* (Raven Theatre); *Roast* and *In the Wake* (The Comrades); *Angry F*gs* (Steppenwolf Garage/Pride Films and Plays). Understudy roles include *For Peter Pan on Her 70th Birthday* (Shattered Globe); *Roz and Ray* (Victory Gardens Theater); *Caught* and *Stupid F#cking Bird* (Sideshow Theatre Company). Select Indianapolis credits include *Stuff Happens*, *Boston Marriage*, *Proof*, *The Vagina Monologues*, and the one-woman show *Callie's Tally* (Phoenix Theatre); *The Living, Arms and the Man*, and *Romeo and Juliet* (Edyvean Repertory Theatre); *Wit* (Purdue University symposium with Pulitzer Prize-winning playwright Margaret Edson). Walker graduated from Butler University and Northern Illinois University.



Norm Woodel+ (Granddad) moved to Chicago from Nashville thirty-three years ago. He quickly became one of the country's top Voice Over Actors voicing for CBSNews, Subway, the infamous Hillary Clinton 3AM political ad, and more. Woodel's TV and movie credits include *The Client*, George Lucas' *Radio Land Murders*, *Matlock*, *Early Edition*, *Chicago PD*, and music videos with Dolly Parton and Reba McEntire. But Woodel's local stage career began right here at BTE when he played Big Daddy in our production of *Cat On A Hot Tin Roof*. He's done *The Rivals*, *Someone To Watch Over Me*, *The Guys*, *The Weir*, *Outside Mullingar* and *Holmes and Watson* at

CAST PROFILES

BTE as well. Having performed at Goodman and other Chicago theaters, Woodel took the Best Supporting Actor Jeff Award for his portrayal of the father in *Golden Boy* at Griffin Theater in 2014. You hear him here as Granddad in *Into The Earth With You* and can see him in *Gods & Monsters*, Playing Frankenstein Creator, James Whale at Theater Wit in Chicago too.

Dining Partners

Eat, drink & enjoy -
MAC dining partners

For all your pre-show meals and post-show bites, we are thrilled to be partnering with these neighborhood restaurants. Our dining partners offer MAC patrons exclusive discounts and special offers. All MAC ticket orders receive coupons to these local favorite restaurants!

a toda madre

ADELLE'S
FINE AMERICAN FARE

GLEN PRAIRIE
LOCAL FLAVOR
FINE FOOD & DRINK

Santa Fe
Mexican Restaurant

RESERVE
22
RESTAURANT BAR EVENTS

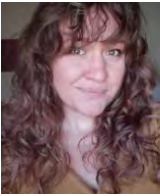
NOBEL HOUSE

Buffalo Theatre Ensemble's mission is to provide a forum in which artists, scholars, writers, students and community members explore new ideas and provocative issues through the production of quality theatre for the enjoyment of its audiences.

UNDERSTUDY PROFILES



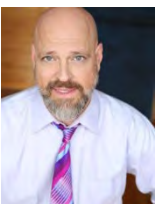
Shannon Bachelder (U/S May Carver) is beyond thrilled to be a part of *Into The Earth With You* - a show that she has been hoping and wishing that BTE would someday produce. She hopes audience members fall in love with this story and its characters the same way she did when she first read the script in 2020. Bachelder is a Chicago based actress. Favorite Chicago credits include Trish in *Death Is So Much Worse* (NealShow Productions) and Justice 3 in *When There Are Nine* (Pride Arts Center).



Amanda Fisher (U/S Carly Carver) is excited to once again understudy with BTE. Previously, she was an understudy in *Season's Greetings* (Belinda) and *Naperville* (Anne). Recently, she also worked with iambe theatre ensemble where she played Grace in *Into the Breeches*. Prior to that she has worked with Wheaton Drama (*Hauptmann* and *Silent Laughter*) and Bard in the Burbs (*Macbeth*, *Much Ado About Nothing*, *Hamlet*, and *A Midsummer Night's Dream*).



Nicole Hendricks (U/S Quinn Carver) is thrilled to understudy with BTE. Currently, Hendricks has been teaching high school English, Theatre, and Speech for twenty years. She enjoys directing her students; recent shows include *Every Brilliant Thing*, *Memoirs of an Imaginary Friend*, *Edward Scissorhands*, and *Big Fish*. Previously, she played Meredith in *Steambath* (Shadowfax) and was the understudy for Dorothy Parker in *Men I'm not Married to: The Words of Dorothy Parker* (Shadowfax). In earlier times, Hendricks was a theater student at the College of DuPage. While studying, Hendricks worked with BTE in *Twelfth Night* (Olivia's maid), and through that experience, continued her love of performance studies. She is a graduate of Northwestern University.



Daniel Vaughn Manasia (U/S Jim Elbert) is very excited to be working on this production. He has worked with BTE on previous productions of *Stove Toucher* (u/s) and *Holmes and Watson* (u/s); Other Chicago productions include: *Dex and Abby* (Pride Arts and Films, Dex); *The Diary of Anne Frank* (Young Peoples Theatre of Chicago,

UNDERSTUDY PROFILES

u/s); *Almost, Maine* (Oil Lamp Theatre, u/s); *HoA* (The Factory Theatre, u/s, perf); *On The Greenbelt* (Strawdog Theatre, u/s, perf). Dan has appeared on camera in: *Otherwise a Woman*; *Fatal Witness*; *City of Vultures 3 and 4*; *Chicago Fire* (NBC), *Justified City Primeval* (FX).

PLAYWRIGHT PROFILE

Brian Watkins' most recent play *Epiphany* premiered at Lincoln Center Theater where it received five Lucille Lortel Nominations and an Outer Critics Circle nomination for Best New Play. Beginning this May, the second season of his television series *Outer Range* can be seen on Amazon Prime Video. Other plays include *Wyoming*, *Evergreens*, *Into The Earth With You* (BTE premiere), *My Daughter Keeps Our Hammer* (upcoming: Teatro deiFabbri in Trieste, Italy), and *High Plains* among others. His plays have been produced internationally by Druid Theatre at the Galway International Arts Festival under the direction of Garry Hynes, at The Flea Theatre and Lesser America under the direction of Danya Taymor, as well as at the Williamstown Theatre Festival, The Juilliard School, Campania Teatro Festival in Italy, Edinburgh Fringe, Creede Repertory, and more. He is under commission from Lincoln Center Theater and the Denver Center Theatre Company. A 2016 O'Neil Finalist, Watkins is a former Juilliard Lila Acheson Wallace Playwriting Fellow and a current New Dramatists resident playwright. Currently, Watkins is writing original screenplays for Warner Bros and Steven Spielberg's Amblin.

Special thanks to

Lewey Q's



Beer. Pizza. Wings. Sports

427 N Main Street, Glen Ellyn, IL 60137

ARTISTIC DIRECTOR PROFILES

Connie Canaday Howard*+ (Managing Artistic Director) has directed numerous productions for BTE, with some favorites being *Time Stands Still*, *Rabbit Hole*, *Noises Off*, *Into the Woods* and *Dancing at Lughnasa*. She is also a member of BTE's acting ensemble, most recently playing Peg in *The Outgoing Tide*, Della in *The Cake*. She holds a MFA in Directing, and has worked regionally with Three Rivers Shakespeare Festival, City Theatre Company, Belvoir Terrace, Drama Workshop, Down River Dinner Theatre, Ingersoll Theatre, Charlie's Showplace, and tours of both theatre and dance, as well as helping to create and perform several improvisational shows. She serves on the Artistic Team of the Joseph Jefferson Committee, and, while a professor, also adjudicated for the Kennedy Center American College Theatre Festival (KCACTF). Canaday Howard recently retired as Chair/Professor of the Theatre Department at the College of DuPage, where she directed countless productions, including some favorites of *The Addams Family*, *Joe White and the Seven Dwarves*, *Taming of the Shrew* and *The Living*. She received COD's Outstanding Faculty in 2004 and served as the Illinois IAI co-chair of the Theatre committee for sixteen years, until recently. She is a proud member of Actors' Equity Association.

Amelia Barrett*+ (Associate Artistic Director) has acted, directed and coached dialect for many Buffalo Theatre Ensemble productions, most recently directing *Miss Bennet: Christmas at Pemberley*. She is a proud member of the acting ensemble and calls the theater her artistic home. As an actor, she has appeared with other local, regional, and international companies. She is Chair of the College of DuPage Theater Department, where she has directed well over 60 productions. She is a proud member of Actors' Equity Association as well as the Screen Actors Guild and the American Federation of Radio and Television Artists. She holds a Master of Fine Arts degree in acting from the University of Texas at Austin and a Graduate Certificate in Laban Movement Analysis from Columbia College Chicago.

ARTISTIC PROFILES

Garrett Bell (Lighting Design) is a lighting designer based in Chicago. Recent Lighting Design credits with BTE include *The Outgoing Tide*, *Miss Bennet: Christmas at Pemberley*, *Andy Warhol's Tomato*, *Season's Greetings*, *Clybourne Park*, *Naperville*, and *The Cake*. Other recent credits include *Tecumseh!* with the Scioto Society, *Heisenberg* (lighting and scenic) with Griffin Theatre, *Sweat* with The Loop Players, *The Imaginary Invalid* and *Disconnect* at Wheaton College, and *Future Perfect* with Bellissima Opera. More can be found at www.garrettmBell.com.

Sarah Lewis (Scenic Designer) is a scenic artist and designer based in the Chicago area. Previous designs with BTE include *Season's Greetings*, *Clybourne Park*, *Naperville* (Jeff nomination), *Miracle on South Division Street* and *39 Steps*. Other designs have been seen at Lifeline Theatre, Big Noise Theatre, The Factory Theatre, The Wilmette Children's Theatre, Mudlark Theatre, Piccolo Theatre, The Jewish Community Center- Mayer Kaplan, Pegasus Theatre Chicago, and others. Sarah is currently a Scenic Artist at Court Theatre. She recently worked as the Assistant Charge Scenic Artist at Steppenwolf Theater Company for eight years and the Charge Scenic Artist at Lookingglass Theatre Company for three years. Her work can be seen at sarahdaltonlewis.com.

Christopher Kriz (Original Music and Sound Design) is a composer and sound designer based in Chicago and an Ensemble Member with BTE. Previous BTE designs include *The Outgoing Tide*, *Miss Bennet: Christmas at Pemberley*, *Andy Warhol's Tomato*, *The 39 Steps* (Jeff nomination), *The Cake*, *Holmes and Watson*, and dozens of others. Chicago design credits include: Goodman Theatre, Steppenwolf, Chicago Shakespeare, Chicago Symphony Orchestra, Court Theatre, TimeLine Theatre, Remy Bumpo, Victory Gardens, Northlight Theatre, Shattered Globe, The Gift Theatre, and many others. Regional: Seattle Repertory Theatre, Kansas City Repertory Theatre, Indiana Repertory Theatre, Alabama Shakespeare Festival, Peninsula Players, American Stage Theatre, Crossroads Theatre, TheatreSquared, Montana Shakespeare, Nebraska Repertory Theatre, Michigan Shakespeare Festival, and others. A winner of five Joseph Jefferson Awards, Kriz is a proud member of United Scenic Artists 829. To hear more of his work, please visit christopherkriz.com.

ARTISTIC PROFILES

Neil Massey‡ (Violence Director) is a Certified Teacher in the Society of American Fight Directors and has been involved in stage combat for over 30 years as a performer, choreographer, and teacher in the US and abroad. Massey has served on the Governing Body of the SAFD, as Assistant Coordinator for the National Stage Combat Workshop at UNLV, and as Coordinator for Winter Wonderland Workshop, the Chicago Regional Stage Combat Workshop. Locally Massey has taught stage combat at Roosevelt University, DePaul University, Columbia College, and College of DuPage. His choreography has been seen on various stages throughout Chicago, including Chicago Shakespeare, The Goodman, Steppenwolf, and others. He is thrilled to return to Buffalo Theatre Ensemble for another production. An accomplished sword cutler, his company, Rogue Steel, supplies theatres, universities, and individuals all over the world with high quality stage combat equipment.

Kimberly G. Morris (Costume, Hair, Makeup and Properties Design) is excited to work again with Buffalo Theatre Ensemble. Based in Wheaton, she is the costume, hair and makeup designer for the College of DuPage. Favorite past projects: recreating five outfits worn by Frida Kahlo for the Frida Kahlo Timeless exhibit and garments for the WARHOL exhibit at the CCMA at COD; puppet design/build of Allan the dog for the movie *Allan the Dog the Movie*; costumes for *The Merry Widow*, *The Mikado* and *La Traviata* with New Philharmonic; props design for *100 Dresses* and *A Year with Frog and Toad* with Chicago Children's Theatre; costume and puppet design for *Blue Planet* with Akvavit Theatre; and puppet, mask and costume design for *Neverwhere* and *Island of Dr. Moreau* with Lifeline Theatre. Upcoming projects include *The Mystery of Edwin Drood* and *Bibbidi-Bobbidi-Do-Wop* with College of DuPage. She has also designed for Babes with Blades Theatre Company, Stage Left Theatre, Fox Valley Repertory, Ball State University, American Shakespeare Center, Shenandoah Shakespeare Express, Heritage Repertory Theatre, Tecumseh!, Wilmette Arts Center, NWHS and MEHS.

Kurt Naebig*+ (Director) has worked professionally in theatre, film, television and radio for more than 35 years, and has been teaching and coaching actors since 1992.

ARTISTIC PROFILES

A Juilliard graduate, he also studied at the Moscow School of the Arts in Russia. Naebig is the former Artistic Director of The Theatre of Western Springs, a member of Buffalo Theatre Ensemble and has worked as an actor at Portland Stage, Milwaukee's Pabst Theatre, National Jewish Theater, Steppenwolf Theatre and Chicago Shakespeare Theatre.

Naebig is a playwright, and his solo show *Stove Toucher* was performed by him at BTE.

He also appeared in such films as *Public Enemies*, *The Express*, *Witless Protection*, *Henry: Portrait of a Serial Killer*, *The Relic*, *Dillinger*, *Howard Beach: Making the Case for Murder*, and has been in seen in the television shows, *Fargo*, *A League of Their Own*, *Empire*, *APB*, *Sense8*, *Chicago Code*, *Detroit 1-8-7* and multiple episodes of *Chicago PD*, *Chicago Fire*, *ER* and *Prison Break*. Kurt has directed multiple seasons of *VC - The Webseries*. He also directed *Clybourne Park*, *Naperville*, *Defiance*, *The 39 Steps*, *Don't Dress For Dinner*, *The Drawer Boy*, *Trumbo: Red White and Blacklisted*, and *Leading Ladies* at Buffalo Theatre Ensemble. Visit him at www.kurtnaebig.com

+ Member of Buffalo Theatre Ensemble

* Member of Actors' Equity Association, the Union of Professional Actors and Stage Managers

^ Member of United Scenic Artists, Local 829

◇ BTE Stage Management Scholarship Recipient

‡Member of Stage Directors and Choreographers Society

WDCB
90.9 FM
JAZZ

**CHICAGO'S HOME FOR
JAZZ AND BLUES**
... and more!

www.WDCB.org

STAGE MANAGER PROFILES

Jennifer J. Thusing* (Equity Stage Manager) is happy to be working with Buffalo Theatre Ensemble again. She served as stage manager for *Andy Warhol's Tomato* last season. In her over 20 years of stage managing, Jennifer has worked for Windy City Playhouse, Rivendell Theatre Ensemble, About Face, SoloChicago and Chicago Dramatists. Thusing is a proud member of Actors Equity Association.

Riley Skalski (Assistant Stage Manager) is overjoyed to be a part of Buffalo Theater Ensemble's season! Previous BTE credits include student shadow for *Time Stands Still*, a dresser for *Improbable Fiction*, and the Assistant Stage Manager and Infection Control Safety Manager for *The Outgoing Tide* and *Miss Bennet Christmas at Pemberley*. Recent film credits include the short film *The Static Syndrome*. Recent theater credits include *Curse of the Starving Class*, *The Diary of Anne Frank*, *Pippin*, *Girls Like That*, and *A Christmas Carol* all performed at College of DuPage. She was a recipient of the John Belushi/Second City Stage Management Scholarship in 2018 and stage-managed College of DuPage's production of *The Foreigner*. After taking a couple of years off, Skalski is ecstatic to continue pursuing a theater career in Chicago.

Daniela Luna◊ (BTE Assistant Stage Manager Scholar) is truly grateful and equally delighted to join Buffalo Theatre Ensemble's season. Being a current student at College of DuPage, her recent credits as a performer include *The Curious Incident of The Dog in The Night-time*, *Once Upon a Mattress*, and *Good Kids*. Luna additionally took on the role of an assistant stage manager during her time in *Good Kids* and is thrilled to continue her time in the theater at COD. After her departure, Luna continues to see the stage in her future, with plans of pursuing a career in the performing arts and sharing her works for years to come.

+ Member of Buffalo Theatre Ensemble

* Member of Actors' Equity Association, the Union of Professional Actors and Stage Managers

^ Member of United Scenic Artists, Local 829

◊ BTE Stage Management Scholarship Recipient



Buffalo Theatre Ensemble (“BTE”) is a 501(c)(3) not for profit, professional theatre company in residence at the McAninch Arts Center (“MAC”) on the campus of College of DuPage.

Ticket revenue only covers a portion of Buffalo Theatre Ensemble’s operating expenses. The rest must be raised through contributions, the majority of which comes in the form of gifts from individuals like you.

It’s because of our close circle of friends that BTE is able to return and explore new ideas and provocative issues through the production of professional, high quality theater for the enjoyment of its audiences.

The resident ensemble brings professional theater to DuPage County and at the same time enhances the training of students in Theater at College of DuPage, providing opportunities for students to develop their talents alongside working theater artists.

*Buffalo Theatre Ensemble is a designated 501(c)(3) not-for-profit organization.
Your donation may be tax deductible to the extent permitted by law.
Please check with your tax advisor.*

**The MAC offers all of this for you,
but we can't do it without you!**

YOUR GIFT HELPS PROVIDE CULTURAL
VITALITY THAT ENRICHES AND ENTERTAINS!

GIVE TODAY! TO SUPPORT THE MAC
visit us at foundation.cod.edu or call (630) 942-3088

**BTE's 23-24 Season is dedicated to the memory of our dear friends
Loretta Hauser and Michael J. McCoy, with deep appreciation.**

**In Memory of
Michael J. McCoy**

Connie Canaday Howard
Alisa Jordheim
Deborah Kolek
Thomas Manak
Martha McCoy
Jane Oldfield
Colleen Trinko
Scott Wetle
Erin Wymore &
Jeff and Julie Wymore

**In Memory of
Loretta Hauser**

Eugene L. Benner
Connie Canaday Howard
Erin Diener-Matul
Lou Ann Kaletka Gaya
Lisa Hada
Patricia Miller

Thomas and Robin
Reeves
Gertrude Rigg
Virginia Schweinberg
and Family
Nancy and Kevin Taylor
Lynn and Gray Wilkens

For 37 years, **Buffalo Theatre Ensemble (BTE)** has played a major role in the cultural community of College of DuPage and the surrounding area, through the marriage of committed permanent ensemble members, fine Chicagoland artists, and great theatrical works. We gratefully acknowledge the donors who have made it possible to return for our 37th season.

This list of donors reflects contributions made from **November 2018 through March 2024**. While we carefully prepared this listing, we recognize that errors may occur. Please accept our apology if you are not properly represented on this list and contact BTE at ab@btechicago.com so we may correct our records.

Benefactor (\$3000 and above)

Robert Bailey
Katherine Balek
Connie Canaday Howard
Cleve E. Carney Fund
Peggy Connolly
DuPage Forever Fund
DuPage Foundation
Jean Hawkinson
Art Hirsch
Illinois Arts Council
Joseph and Beth Kindlon
Fund
Maggie & Mike McCoy
Network for Good
Carolyn & Eric Oesterle
Karen Owen
John K. Rutledge & Betty
Joseph
Thomas Scott
Scott Vessely
Kathy Wessel
Donald Westlake
Norman Woodel

Dream Maker (\$1000–\$2999)

Mary & Renato Bacci
Amelia Barrett
Deborah Borge
Michael Boyna
Sharon Brockmeier
John and Pamela Dalby
Kathleen Drennan
Dr. James & Judy Dunlap
Friends Through FaceBook
Debra Fulks
Phil & Amy Gelber
Jon & Ruth Good
Charles & Phyllis Goodman
George and Mary Hall
Richard Jarman
Charlene Kornoski-Duvall
Larry Larson
Paula Chuchro and James
Lenihan
Jessica Lippman
Harold & Karyl McAninich
Kathleen McCullough

David J. and Donna M.
Millhouse
Mrs. Joseph Morrissey
Tom & Karen Pulver
William Raymond
Salesforce.com Inc
Sandra Sansone Brennan
Nathan Schuette
Kristin & Peter Shulman
Maureen and Terrence
Taylor
Kelli Walker
Bonnie M. Wheaton
Robert Wunderlich
Mary Ann & Walt Zlotow

Imaginer (\$500–\$999)

Brian Allendorfer
Lynette Arendt
Bob and Betty Becker
Mary Sue Brown
John E. & Suzanne R.
Buntrock
Robert and Nancy Casey

FRIENDS OF BUFFALO THEATRE ENSEMBLE

Glenn Domovic
 James and Marie Drasal
 Donald and Catherine Fischer
 Russell and Judy Flores
 Glen Ellyn Chamber of
 Commerce
 Ida Hagman
 Rebekah & Rodney Harris
 Bob & Sue Hartman
 Nancy Headen
 Cynthia Ann & Andrew
 Johnson
 Richard & Mary Kuhn
 Robert & Jean Lindsey
 John & Rita Meier
 Kevin O'Brien
 Jim & Lorraine Paulissen
 Edward & Bernadine Pillar
 Pamela Pipkin
 William Podgorski
 Merrill & Janet Rajeck
 Tina Rudins
 Randy Johnson & Lisa
 Savegnago
 Shanker Valleau Wealth
 Advisors
 James & Linda Smedinghoff
 Gloria P. & Kennan R. Sullivan
 Haruo Kurokawa and Hal
 Temple
 Marcy and David Uphoff
 Larry Ward
 Erin & Jeff and Julie Wymor

Director's Circle (\$250-\$499)

Joy & Bob Barrell
 Marcia & Arthur Burke
 Robert Cappetta
 Dr. and Mrs. Brian W. Caputo
 Chipotle Community Roots
 Robin Dye
 Fran Kravitz and Daniel
 Edelman
 John & Emily Herndon
 Jan T. and Kathryn Johansson
 John J. Bryant Fund
 Dennis Johnson
 Barbara Kamm
 Linda Kulikowski
 Paul & Eileen Lefort
 John Mategrano
 Michael McKeon

Carol & Michael Moon
 John M. Mulherin
 Michael J. and Melissa F.
 Nachman
 Gwen O'Loughlin
 Jean R. and Joanne Oliphant
 Barb & Doug Rundell
 Alfred & Lorraine Schuller
 Patricia & Richard Schwarze
 Arnold R. & Susan M. Stenvog
 Nancy Svoboda
 Linda & Barry Tusin
 Rich & Kathy Wilders
 Jo Anne Zipperer
 Peggy Aldworth
 Michael Church
 Patrice Conaway
 Gary Harper
 Lou Ann Kaletka Gayan
 Martha McCoy
 Sarah & Roger Poeppel
 Marlene & Robert Rosecrans
 Kathy Schleicher
 Patricia Spence
 Jon Summerbell
 John L. Ladle
 Steve Scott

Rising Star (\$50 to \$249)

Jackie Friedman
 Anne Ahlert
 Barbara and Lowell Anderson
 Ron & Judith Anderson
 Anonymous
 Christine Aument
 Susan Bell
 Eugene Benner
 Blackbaud Giving Fund
 Peter Bostock
 James Boves
 Julie Breen
 Martha & Ray Bright
 Joanne Brown
 Patrick and Joanne Callahan
 Bonnie Campbell
 Abbey Canaday Howard
 Maura Canzano
 Larry & Karen Christensen
 Ray & Melissa Cliff
 Shiela Cosco
 Lisa Dawn Curran
 Barb Danvir Hepfer
 Erin Diener Matull

Julia Dilberti
 Gary Dobson
 Victoria Donnelly
 Ted Donner
 LuEllen Doty
 Andrea Duffy
 Robert Dulski
 Marla Eglowstein
 Gary Ernst
 Sally & William Fairbank
 Angela and James Frank
 Ruta Freimanis
 Barbara Fried
 Bonnie L. and Jeffrey L. Gahris
 Karen Gaydos
 Robin George
 Chris Gerrib
 Fran Gilles
 Peter Glassman
 Dawn Goldhirsh
 Craig D. Goldwyn
 John & Lisa Gorak
 Kathleen Graffam
 Lisa Hada
 James and Gail Hannon
 Cassy Harlo Schutz
 Paul & Floy Haschke
 Edward M & Cindy L Hegarty
 James & Ann Helt
 Diane Hicks
 Ron & Valerie Hollaender
 John C & Stephanie B Iglehart
 Carla Inwood
 Mary Johnson
 Dennis Johnson
 Bernard Jokiel
 Charles & Margaret Jonah
 Alisa Jordheim
 Jean Joslyn
 Jill Kainu
 David Kee
 Kay & Rick Kehoe
 Thomas Kelly
 Virginia and Charles Klingporn
 Deborah Kolek
 Fran Kravitz
 Mary Kraska
 Sally & Martin Kuttesch
 Eileen Landau
 Cynthia Laughlin
 Ida Lee

FRIENDS OF BUFFALO THEATRE ENSEMBLE

Virginia Lennon
 Esther Loth
 Holly Malloy
 Tom Manak
 Corrine Marrinan Tripp
 Brandee Martin-Horton
 Walter Martineau
 Rich Matheson
 David and Carolyn May
 Jacqueline McGrath
 Steven Merkel
 Tom Mikrut
 Patricia Miller
 James Miloobowski
 Thomas Montgomery
 Fate
 Jane Moore
 Patricia Motto
 Frank Mraz
 Donald & Mary Ellen
 Newsom
 Kelly O'Hanlon
 Oberweiss
 Jane Oldfield
 Judith Olson
 Kenneth Orenic
 Jeff Ownby
 Dianne Paulini
 Dean & Lisa Payton
 Michael Pesola
 Mark Pfefferman
 Judy Pitts
 Terra Stetz & Rita
 Potter
 Cynthia & Thomas
 Power
 Joe Pundzak
 Pat Read
 Mary Ellen Reedy
 Carol & Alfred Reiman
 Gertrude Rigg
 Gail Robinson
 Bruce Rodman
 Judith Ronaldson

Daniel F. and Barbara
 Roos
 Susan Ross
 Gus & Georgia
 Rousonelos
 Jim Ruffing
 Mark Sand
 Kathleen Schneider
 Mary Kay Schultz
 Virginia Schweinberg
 and Family
 Paul Seidlitz
 Wei Shissler
 Donna Jean Simon
 Iona Simon
 Michael Sitrek
 M.D. & Laura Skeet
 Jean Spitzer
 Susan Spooner
 Stephen Squier
 Donald Stading
 Louis & Marilyn
 Steenwyk
 James Stover
 Barbara & Thomas
 Suhrbur
 Helen Szymanski
 Kathleen Talenco
 Nancy and Kevin Taylor
 Dr. and Mrs. Anthony
 Taylor
 Jean Tello
 George Tenne
 TIAA
 Mary Trecek
 Paul & Colleen Trinko
 Joseph & Mary Beth
 Turek
 Barbara Urick
 Alan L. & Linda K.
 Varney
 James & Carolyn
 Vondran
 Roy & Janice Wahnert

Vince & Gloria Walsh-
 Rock
 James Weichel
 Werner Weiss
 Scott Wetle
 Bobbi & John Wheatley
 Mary Wiesen
 Tod D. Willman
 William Womack

Business Partners

Adelle's Fine American
 Fare
 Cabernet and Co
 Club Pilates Glen Ellyn
 Emergence See
 Photography
 The Foxtail
 Fuschia Glen Ellen
 The MAC
 Gia Mia
 The Gift Theatre
 Gindo's Spice of Life
 Health Track
 Hot Worx Wheaton
 Lewey Q's Tap, Beer,
 Pizza, Wine, Spirits
 Maise and Mash
 Mindful Movements
 Pilates & Yoga
 Oil Lamp Theatre
 Paramount Theatre
 Peet's Coffee Downers
 Grove
 Yoga Six Downers Grove
 Remy Bumpo
 Theatre
 Silver Fox Travel
 Skeleton Key
 Two Hound Red



BTE BOARD OF DIRECTORS

Margaret Aldworth, Robert Jordan Bailey, Amelia Barrett, Connie Canaday Howard, Ted Donner (Vice President), Elyse Kennard, Brandee Martin-Horton (President), Laura Leonardo Ownby (Secretary), Anthony Tumea (Treasurer).
Legal Counsel: Derek Johnson

Members Emeriti: Robert Cappetta, Peggy Connolly, Rebecca Cox, Lisa Dawn, Ida Hagman, Diane Hicks, Richard Jarman, Michael J. McCoy, Joan Morrissey, Kurt Naebig, Carolyn Oesterle, John K. Rutledge, Sandra Sansone Brennan, Colleen Trinko, Kelli Walker, Kathy Wessel, Bonnie Wheaton, Richard Wilders, Norm Woodel, Mary Ann Zlotow

STUDENT VOLUNTEERS

Michael Bellino	Anita Constabile	Dimitris Michelis	Brandon Torres
Brandon Michael Bunn	Nathan Cozzi	Kailey Nelson	Marissa Warner
Caroline Broderick	Elmeka Elme	Ryan Sinclair	Brendan Matthew Weaver
Benjamin Cardinal	Brendan Flaherty	Gina Robertelli	Owen Woodard
Ashley Chavez	Trevor Frueh	Emily Sheehan	
Cassie Collins	Ryan Gentile	Rachel Strolle	
Jack Columbo	Julie Good	Tess Sundstrom	
	Kyle Krisch	Aaron Taylor	

VOLUNTEERS

Peggy Aldworth	Christopher Corrigan	Brett Mathieson	Lynda Pratscher
Quinn Bayola	Julia DiLiberti	Maggie McCoy	Erin Lynn Ransford
Debbie Borge	Andrea Ficarelli	Caroline McGowan	Erica Sandvig
Bill Bulger	The Late Joan Frank	Isola Metz	Debbye Simpson
Benjamin Caracello	Ken Frank	Barb Murphy	Nancy Svoboda
Gayatri Choudhary	Rex Howard	Elaine Patrick	Donald Westlake
Peggy Connolly	Paul LeFort	Tony Payne	Mary Ann Zlotow
		Pam Pipkin	



btechicago.com



facebook.com/BuffaloTheatreEnsemble



[BTEattheMAC](https://twitter.com/BTEattheMAC)

HOUSE NOTES

- Cameras and recording devices are not allowed in the theater and are prohibited by our contracts with the artists.
- Smoking is not permitted in the theater or on campus.
- For your comfort and security, all backpacks and large bags must be checked.
- Please turn off all cell phones and any other alarms while in the theater.
- Emergency phone number at College of DuPage Police Department for after-hour calls is (630) 942-2000.
- Latecomers seated at discretion of the House Manager.
- Groups of 10 or more may contact (630) 942-3026 or grouptix@cod.edu to arrange for group discounts.
- If you notice a spill in the theater, please notify an usher.
- McAninch Arts Center volunteers are people who assist the house staff in areas of ticket taking, ushering and general management during performances. To get involved, call (630) 942-3705.
- **For Americans with Disabilities Act** accommodations, call (630) 942-2141 (voice) or (630) 858-9692 (TDD).
- **Infrared Assistive Listening Devices:** For audience members who desire audio amplification of performances, headsets with individual volume controls are now available. You may check out the headsets at the Box Office with a driver's license. *Underwritten by a generous gift from The Knowles Foundation.*

MAC STAFF LISTING

MAC Administrative Staff

Director of the McAninch Arts Center.....	Diana Martinez
Business Manager.....	Cassi Fanelli
Project Manager.....	Kari Schoettle
Business Office Assistant.....	Brianna Garcia
Curator, Cleve Carney Museum of Art	Justin Witte
Assistant Curator.....	Julia Walker
Gallery Assistant.....	Paloma Alfaro
Marketing and Patrons Services Coordinator.....	Janey Sarther
Graphic Designer.....	Wendy Melgar
Interim Director of Development for Cultural Arts.....	Janie Oldfield
Education and Community Engagement Coordinator.....	Mandy Rakow
Office Manager/Events Coordinator	Morgan Bainbridge
Student Clerical Assistant.....	Blake Lietz

MAC Box Office and Front of House Staff

Box Office Manager	Julie Elges
Assistant Box Office Supervisors	Jim Gosling, Elise Wash
Box Office Assistants	Patrick Garon, Joanne Hunt
Patron Services Manager	Tom Murray
Assistant Patron Services Supervisor.....	Deborah Kolek
House Manager/Volunteer Coordinator	Rob Nardini

MAC Resident Professional Ensembles

Buffalo Theatre Ensemble, Artistic Director.....	Connie Canaday Howard
Buffalo Theatre Ensemble, Associate Artistic Director	Amelia Barrett
Buffalo Theatre Ensemble, Business Manager.....	Bryan Burke
New Philharmonic, Music Director and Conductor	Kirk Muspratt
New Philharmonic, Associate Conductor and Librarian	Benjamin Nadel
New Philharmonic General Manager	Paula Cebula
New Philharmonic Personnel Manager.....	Karen Dickelman

MAC Design and Technical Staff

Technical Production/Lighting/Sound Coordinator.....	Richard Arnold, Jr.
Technical Theater Assistant Coordinator	Sabrina Zeidler
Costume and Make-up Design Coordinator.....	Kimberly G. Morris
Assistant Costume Coordinator and Stitcher.....	Gretchen Woodley
Production Manager.....	Joe Hopper
Sound and Lighting Specialist	Ben Johnson
Lighting Production Specialist.....	Elias Morales
Audio Production Specialist.....	Fisher Parsons
Events Production Specialist/Tech. Director – BTE.....	Caitlyn Woods
Stage Hands	Bobby Bryan, Zak Zubka